

Distributed by:

JAMECO[®]
ELECTRONICS

www.Jameco.com ♦ 1-800-831-4242

The content and copyrights of the attached
material are the property of its owner.

Jameco Part Number 740965

PC Board Vertical Pin Headers with ACTION PIN Contacts

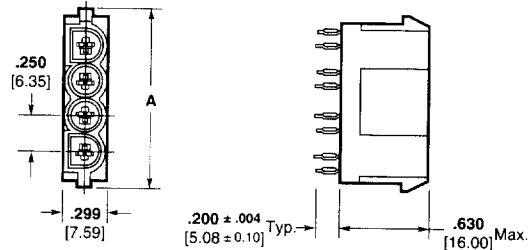
PC Board Vertical Pin Headers with ACTION PIN Contacts

Material:

Housing — PBT, black

Flammability Rating — UL94V-0

Contacts — Copper alloy, plated with tin-lead over nickel on entire contact



Related Product Data:

Performance Characteristics — page 9015

Technical Documents: pages 9015 and 9080

Product Specification
108-5222 ACTION PIN Universal MATE-N-LOK ACTION PIN Header Assembly

Number of Circuits	A Dim.	Part Numbers	Mates with Housing Part Numbers (Using Socket Contacts)	
			UMNL II	UMNL
2	.750 19.05	173924-1*	770017-1	350777-1
3	1.000 25.40	173925-1*	770018-1	350766-1
4	1.250 31.75	173926-1*	770019-1	350779-1

Note: Install in PC Board with arbor frame tool.

Mating Connectors:

Universal MATE-N-LOK II

Plug Housings — pages 9006 thru 9008

Universal MATE-N-LOK

Plug Housings — page 9019

Product Specification:

Centerline spacing — .250 [6.35]

Material:

Housing — Nylon

Flammability Rating — UL 94V-0

Contacts — Phosphor bronze
Solder tail width .052 [1.32]

Related Product Data:

Performance Characteristics — pg. 9015

Technical Documents: pg. 9015 and 9080

Product Specification
108-1053 Universal MATE-N-LOK PC Board Headers

Mating Connectors:

Universal MATE-N-LOK II

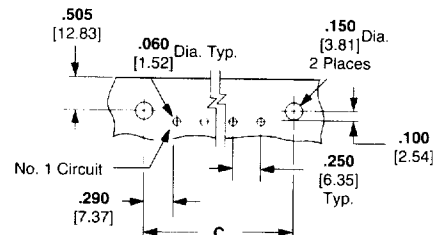
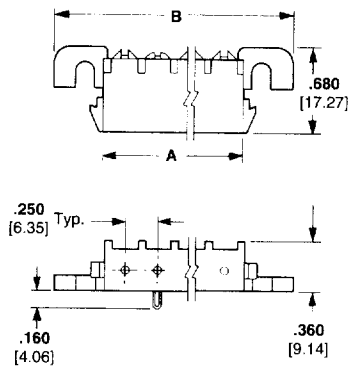
Plug Housings — pg. 9006 and 9008

Universal MATE-N-LOK

Plug Housings — pg. 9019

PC Board Right-Angle Pin and Socket Headers

2, 3, 4 and 5 Circuit, In-line



Use 6-32 UNC Pan Head Screw
3/8 [9.53] long for mounting
(Not Supplied)

Recommended PC Board Hole Layout
.062 [1.57] Board Thickness

Number of Circuits	Dimensions			Contact Finish	Right-Angle Header Part Numbers			
	A	B	C		Pin	Socket	Mates with	
							UMNL II	UMNL
2	.550 13.97	1.245 31.62	.830 21.08	Pre-tin	1-350942-0	643226-1	770017-1	350777-1
				Duplex ¹	2-350942-0	—		
3	.800 20.32	1.495 37.97	1.080 27.43	Pre-tin	1-350943-0	643228-1	770018-1	350766-1
				Duplex ¹	2-350943-0	643228-2		
4	1.050 26.67	1.745 44.32	1.330 33.78	Pre-tin	1-350944-0	643230-1	770019-1	350779-1
				Duplex ¹	2-350944-0	643230-2		
5	1.300 33.02	1.995 50.67	1.580 40.13	Pre-tin	1-350945-0	643232-1	770016-1	350809-1
				Duplex ¹	2-350945-0	643232-2		

¹ Duplex Finish — Plated with .000030 [.000762] min. gold in mating area, matte tin-lead on solder tail end over .000050 [.00127] min. nickel underplate on entire contact.

For complete product information, order Catalog 82181