

Distributed by:

**JAMECO**<sup>®</sup>  
ELECTRONICS

**www.Jameco.com ♦ 1-800-831-4242**

The content and copyrights of the attached  
material are the property of its owner.

Jameco Part Number 742080

### Housings, Free Hanging or Panel Mount

#### Product Specification:

Centerline spacing—.165 [4.19]

#### Material:

**Housing**—Nylon, Natural Color-Brck Red

**Flammability Rating**—UL94V-0

#### Related Product Data:

**Performance Characteristics**—page 9068

**Contacts**—page 9070

**Housings**—page 9071 thru 9073

**Keying Plug**—page 9070

**Strain Reliefs**—page 9074

**Commoning Bar**—page 9074

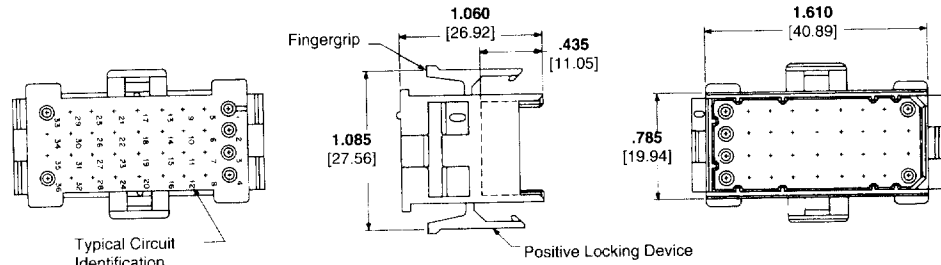
**Mating Headers**—pages 9075 thru 9076

**Technical Documents:** page 9068 and 9080

#### Product Specification

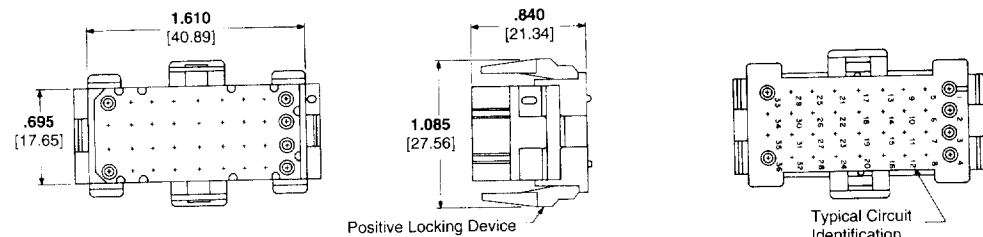
108-1022 (MR) Miniature Rectangular Connectors

### 36 Circuit, Matrix



Pin Housing (Cap)

Part Number  
1-640516-0

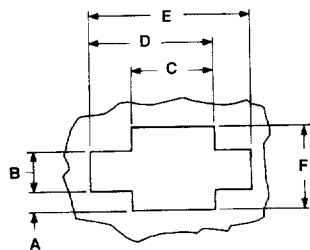


Socket Housing (Plug)

Part Number  
1-640526-0

#### Recommended Panel Cutout for Pin and Socket Housings

View is from housing entry side



Panel Thickness .068 [1.75] Max.

| Number of Circuits | Panel Cutout Dimensions |               |               |               |                |                |
|--------------------|-------------------------|---------------|---------------|---------------|----------------|----------------|
|                    | A                       | B             | C             | D             | E              | F              |
| 2                  | .105<br>2.67            | .220<br>5.59  | .475<br>12.07 | .630<br>16.00 | .785<br>19.94  | .430<br>10.92  |
| 3                  | .105<br>2.67            | .220<br>5.59  | .640<br>16.26 | .795<br>20.19 | .950<br>24.13  | .430<br>10.92  |
| 4                  | .157<br>3.99            | .280<br>5.28  | .475<br>12.07 | .630<br>16.00 | .785<br>19.94  | .595<br>15.11  |
| 6                  | .208<br>5.28            | .345<br>8.76  | .475<br>12.07 | .630<br>16.00 | .785<br>19.94  | .760<br>19.30  |
| 9                  | .208<br>5.28            | .345<br>8.76  | .640<br>16.26 | .795<br>20.19 | .950<br>24.13  | .760<br>19.30  |
| 12                 | .225<br>5.72            | .475<br>12.07 | .640<br>16.26 | .795<br>20.19 | .950<br>24.13  | .925<br>23.50  |
| 15                 | .308<br>7.82            | .475<br>12.07 | .640<br>16.26 | .795<br>20.19 | .950<br>24.13  | 1.090<br>27.69 |
| 20                 | .308<br>7.82            | .475<br>12.07 | .805<br>20.45 | .960<br>24.38 | 1.115<br>28.32 | 1.090<br>27.69 |
| 24                 | .390<br>9.91            | .475<br>12.07 | .805<br>20.45 | .960<br>24.38 | 1.115<br>28.32 | 1.255<br>31.88 |
| 36                 | .625<br>15.86           | .500<br>12.70 | .800<br>20.32 | .950<br>24.13 | 1.100<br>27.94 | 1.750<br>44.45 |

- Notes:**
- When mounted in a .060 [1.52] thick panel, the cap's mating end extends .800 [20.32] beyond the panel front; wire end extends .220 [55.88] from the panel rear. Plug mating end extends .580 [14.73] beyond the panel front; wire end extends .220 [55.88] from the panel rear.
  - The panel should be punched so that the housing enters the panel in the same direction as the punch for ease of assembly.

For complete product information, order Catalog 82181



Pin and Socket Connectors