

Distributed by:

JAMECO[®]
ELECTRONICS

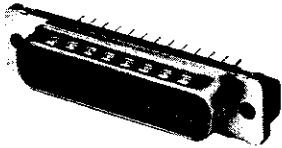
www.Jameco.com ♦ 1-800-831-4242

The content and copyrights of the attached
material are the property of its owner.

Jameco Part Number 742750

HD-20 Front Metal-Shell Straight Posted Connectors

Plug



With Grounding Indents



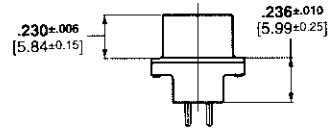
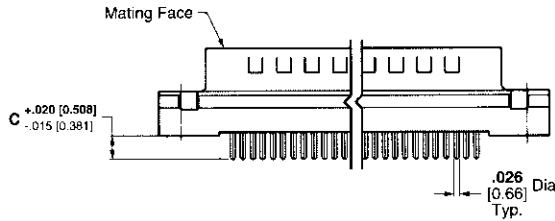
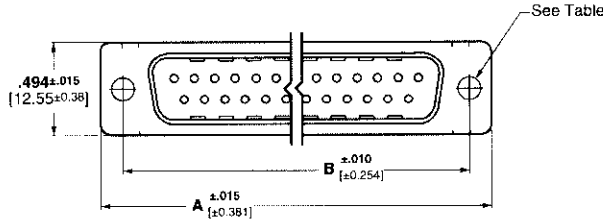
With Threaded Insert



With Fixed Female Screwlock



With Retention



See customer drawings for pcb layouts.

Material and Finish:

- Shell**—Steel, tin plated
- Housing**—94V-0 rated thermoplastic, black
- Threaded Inserts**—Brass, unplated
- Female Screwlocks**—Zinc
- Pin Contacts (Posted)**—Brass, plated as follows:
 - A**—.000030 [0.00076] gold on mating end, tin-lead on termination end, with entire contact .000050 [0.00127] (min.) nickel underplated
 - B**—Gold flash on mating end, tin-lead on termination end, with entire contact .000050 [0.00127] (min.) nickel underplated

Technical Documents:

- Product Specification**—108-40025
- Application Specification**—114-40023

Shell Size	No. of Contact Positions	Dimensions			Contact Finish (Plating Code)	Plug Part Numbers				
		A	B	C*		With Standard Mounting Holes	With 4-40 Threaded Inserts	With Retention 4-40 Inserts (for .062 [1.58] PCB)	With Fixed Female Screwlocks	With Retention 4-40 Screwlocks (for .062 [1.58] PCB)
1	9	1.213 30.81	.984 24.99	.125 3.18	A	747871-2	747871-8	2-748003-0	1-747871-4	—
				.170 4.32	A	747871-4	—	—	1-747871-3	—
2	15	1.541 39.14	1.312 33.33	.125 3.18	A	—	747872-8	—	—	748026-1
				.170 4.32	A	747872-4	—	—	1-747872-6	—
3	25	2.090 53.09	1.852 47.04	.125 3.18	A	745968-2	745968-8	2-747704-0	1-745968-4	748027-1
				.170 4.32	B	—	745968-7	—	1-745968-3	—
				.170 4.32	A	745968-4	—	—	1-745968-6	—
				.170 4.32	B	—	—	—	1-745968-5	—
4	37	2.732 69.39	2.500 63.50	.125 3.18	A	747375-2	747375-8	—	—	787686-1

*.125 [3.18] post length is recommended for pc board thickness of .062-.093 [1.58-2.36] max.; .170 [4.32] post length is recommended for pc board thickness of .093-.125 [2.36-3.18]; .250 [6.35] post length is for special applications

- Notes:**
1. All plugs are preloaded with size 20 DF posted pin contacts.
 2. Male screw retainers are used as mating hardware for connectors with 4-40 female screwlocks.
 3. PC board hole size is .121±.002 [3.07±0.0508] for all retention inserts and screwlocks.

Straight Posted Connectors