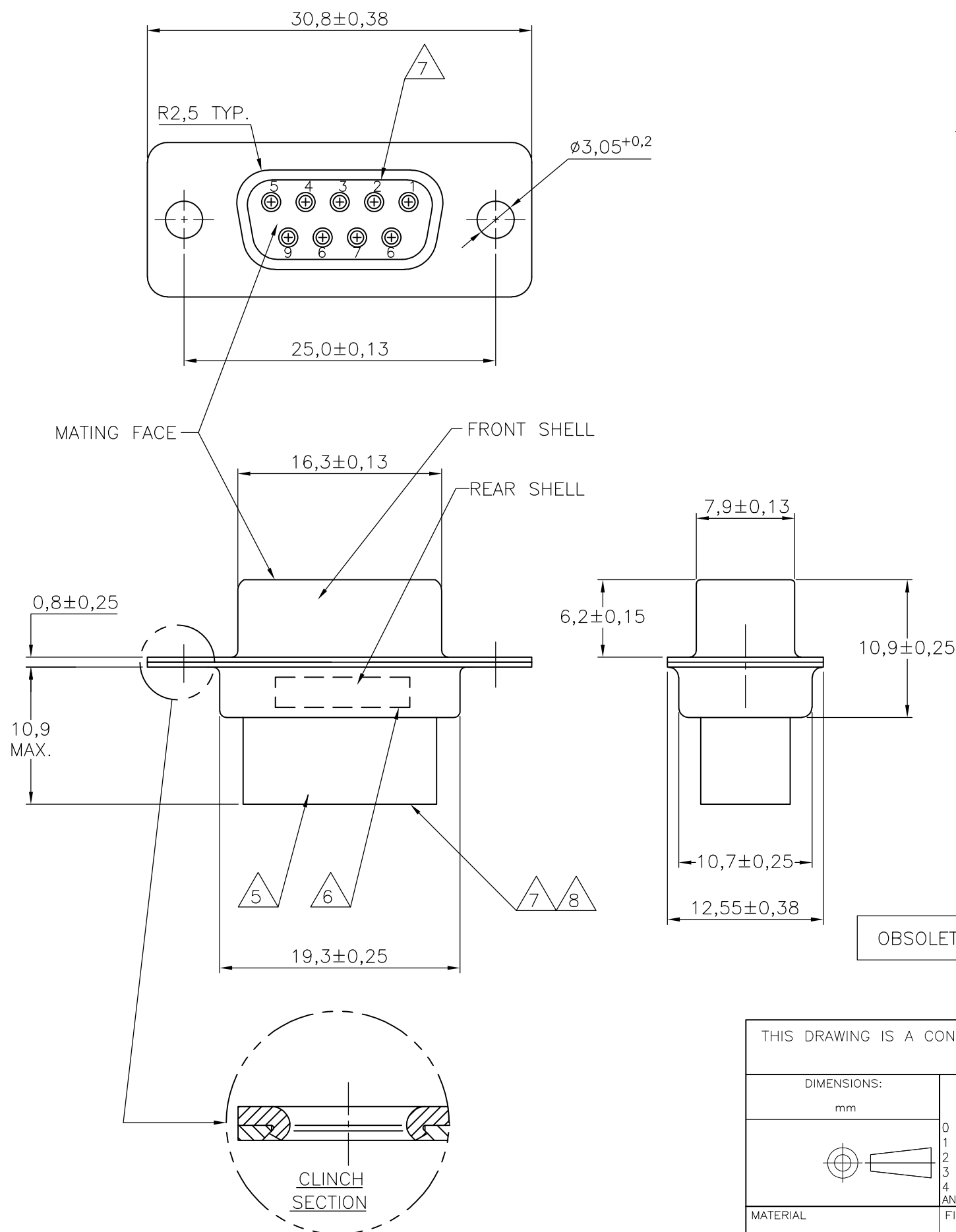


THIS DRAWING IS UNPUBLISHED. RELEASED FOR PUBLICATION  
 © COPYRIGHT - By - ALL RIGHTS RESERVED.

LOC	DIST	REVISIONS			
P	LTR	DESCRIPTION	DATE	DWN	APVD
H	-	M2	REVISED PER ECO-11-005294	02APR11	RK HMR



NOTES:

- 1 THIS RECEPTACLE ACCEPTS SIZE 20 REC. CONTACTS.
- 2 MAXIMUM WIRE INSULATION RECOMMENDED FOR USE WITH THIS RECEPTACLE IS 1,73 DIA. MAX..
- 3 RETENTION TINES ARE AN INTEGRAL PART OF INSERT.
- 4 FOLLOWING INSERTION/REMOVAL TOOLS ARE RECOMMENDED FOR USE WITH THESE CONNECTORS:  
 32-28AWG/28-24AWG CONTACTS  
 91067-3 INSERTION/REMOVAL  
 726363-1 INSERTION ONLY  
 24-20AWG CONTACTS  
 726363-1 INSERTION ONLY  
 726364-1 REMOVAL ONLY
- 5 INSERTS: GLASSFILLED SELF-EXTINGUISHING PBT, COLOR BLACK.
- 6 TE , TE CONNECTIVITY PARTNUMBER AND DATE CODE; INK STAMPED.
- 7 RAISED CAVITY IDENTIFICATION 0,8 HIGH.
- 8 RAISED CAVITY IDENTIFICATION NUMBERS ON WIRE SIDE ARE WHITENED FOR 164531-9.

OBSOLETE	BRIGHT TIN	BRIGHT TIN	STEEL	164531-9	8
	BRIGHT TIN	BRIGHT TIN	STEEL	164531-4	
	PLATING FRONT SHELL	PLATING REAR SHELL	MATERIAL SHELLS	PART NUMBER	

THIS DRAWING IS A CONTROLLED DOCUMENT.		DWN D. KESSLER	11FEB99	<b>STE</b> TE Connectivity	
DIMENSIONS: mm		CHK W. SOOMERS	APVD W. SOOMERS		
TOLERANCES UNLESS OTHERWISE SPECIFIED:		PRODUCT SPEC		9 POS HDP-20 RECEPTACLE CONNECTOR SIZE 1	
0 PLC ± -		APPLICATION SPEC		SIZE	RESTRICTED TO
1 PLC ± 0,2		-		A3	-
2 PLC ± -		-		CAGE CODE	DRAWING NO
3 PLC ± -		-		-	C-164531
4 PLC ± -		-		WEIGHT	-
ANGLES ± 2'		-		CUSTOMER DRAWING	
MATERIAL		FINISH		SCALE	SHEET
-		-		NTS	1 OF 1
				REV	M2