

Distributed by:

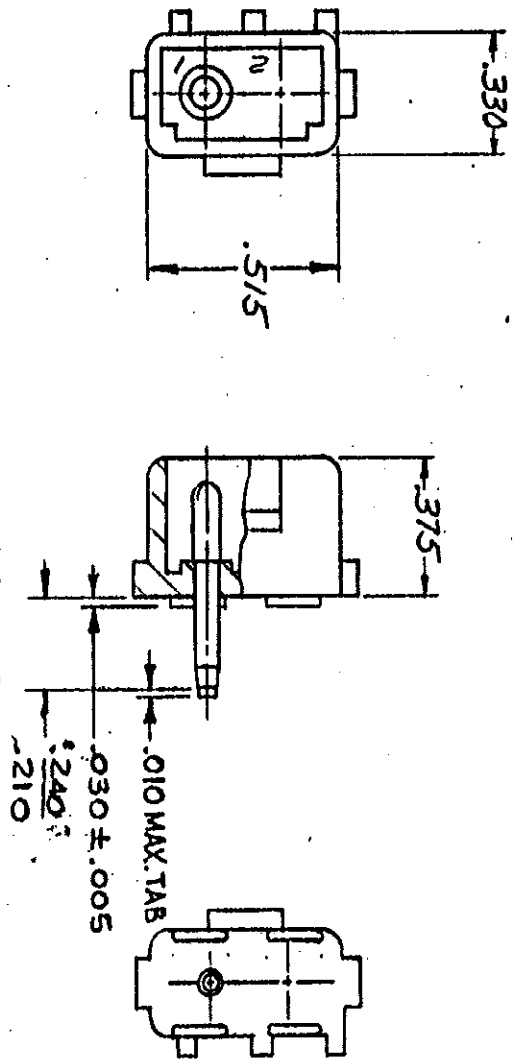
JAMECO[®]
ELECTRONICS

www.Jameco.com ♦ 1-800-831-4242

The content and copyrights of the attached
material are the property of its owner.

Jameco Part Number 751867

1. PARTS COMPLY WITH AMP SOLDERABILITY SPEC. NO. 109-11-3



RECOMMENDED LAYOUT FOR .125 THICK P.C. BOARD

Unpublished copy not to be reproduced without permission of AMP Incorporated.

L	ABSOLUTE -2	3/16	418
	PER ECN CM-2709	3/16	86
K	OBSELETE H-2124	3/16	
	41,54,6-1,7-1,8-19-1	3/16	
	1-2,2-2,3-2,4-2,5-2,6-2	3/16	
	72,8-2,9-2 CM-473	3/16	

J	RESTORED	5F	RS	4/1/68
J	REV. PER M-7375	5F	QM	8/29/83
H	ADD'D. WIRE 2, M-7255	5F	NH	5/11/83
G	ADDED WIRE 2, M-6694	5F	NH	11/28/81
F	REMOVED SOLDER, M-6543	5F	NH	2-17-80
E	REMOVED SOLDER, M-5334	5F	NH	6/24/79
D	REMOVED SOLDER, M-4161	5F	NH	3-17-77
C	ECN M-3871	5F	RF	9-7-76
B	ECN M-3452	5F	RF	3/9/76
A	ECN M-2152	5F	RF	2/9/76
LTR	REVISION RECORD	DR	CHK	DATE

NUMBER 350540

REQUIRED PER ASSEMBLY	DESCRIPTION

350540-1	NYLON - NATURAL	COPPER ALLOY PRE-TIN
ASSEMBLY NO.	HSG MATL & COLOR	PIN MATL & FINISH
©1973 by AMP INCORPORATED. ALL RIGHTS RESERVED. AMP PRODUCTS COVERED BY PATENTS AND/OR PATENTS PENDING. DR. 9. Edman 5-23-73 CHK. J. H. Abbott 1/1/73 DE. J. H. Abbott 4-10-73 APP. J. H. Abbott 4-10-73 MATERIAL AND FINISH: SEE TABLE WIRE RANGE - INSULATION: H TOLERANCE EXCEPT AS NOTED: ± 10% NAME: 2 CIRCUIT MATEN-LOK P.C. BOARD HEADER CLASS: .084 DIA. PIN TYPE: POSITIVE LOCK LOC: CM B NO: 350540. L RT: L AMP INCORPORATED HARRISBURG, PENNA. CUSTOMER COPY REFERENCE ONLY		



DIMENSIONS IN INCHES. DO NOT SCALE PRINT.