

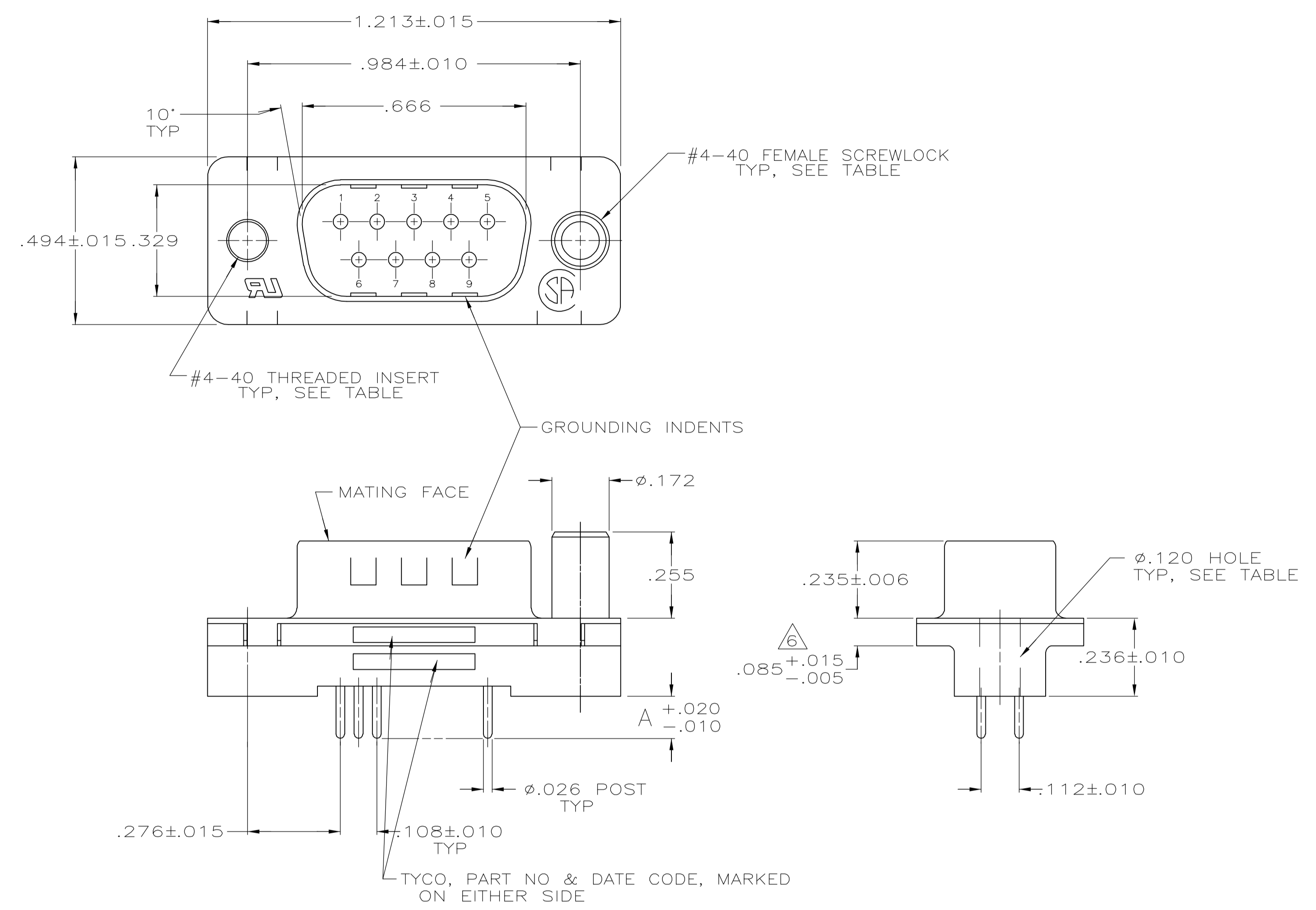
Distributed by:

JAMECO[®]
ELECTRONICS

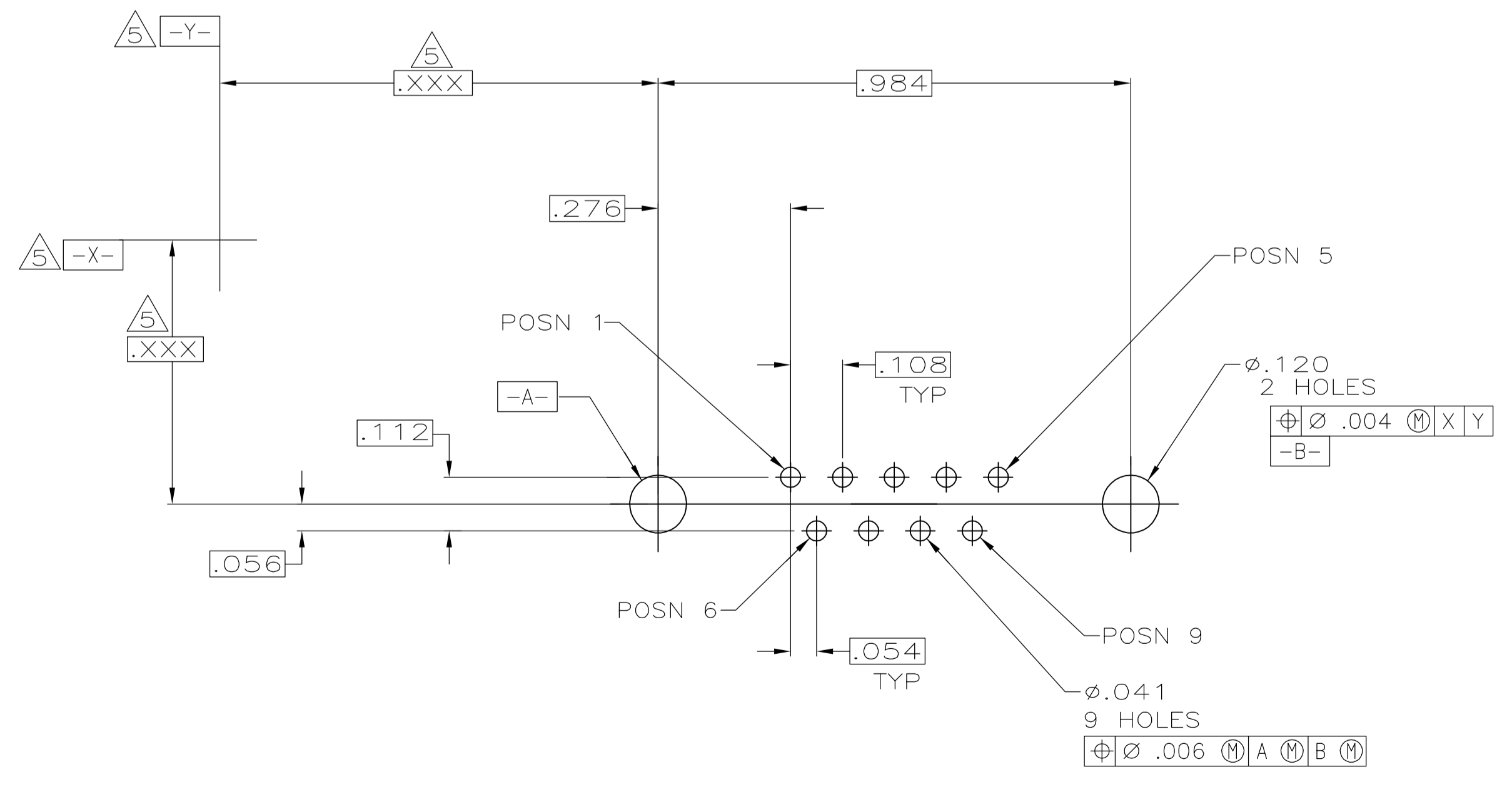
www.Jameco.com ♦ 1-800-831-4242

The content and copyrights of the attached
material are the property of its owner.

Jameco Part Number 755286



- ① HOUSING: FLAME RETARDANT 94V-0 RATED THERMOPLASTIC;
 COLOR: BLACK.
 SHELL: STEEL.
 CONTACTS: BRASS.
 SCREWLOCKS: ZINC.
 INSERTS: BRASS.
- ② SHELL: .000200 MIN TIN OVER .000100 MIN COPPER.
 CONTACTS: SEE TABLE.
 SCREWLOCKS: CLEAR CHROMATE.
 INSERTS: UNPLATED.
- ③ GOLD PLATED FOR A LENGTH OF .150 MIN FROM MATING END,
 GOLD FLASH IN MATED AREA, .000100 MIN TIN
 FOR A LENGTH OF DIMENSION A FROM OPPOSITE END,
 ALL OVER .000050 MIN NICKEL.
- ④ GOLD PLATED FOR A LENGTH OF .150 FROM MATING END,
 .000030 MIN GOLD IN MATED AREA, .000100 MIN TIN
 FOR A LENGTH OF DIMENSION A FROM OPPOSITE END,
 ALL OVER .000050 MIN NICKEL.
- ⑤ DATUMS AND BASIC DIMENSIONS ESTABLISHED BY CUSTOMER.
- ⑥ .110 MAX IN SHELL TAB CLINCH AREAS.



RECOMMENDED PC BOARD MOUNTING DIMENSIONS

FEMALE SCREWLOCKS	④	.170	1-5747871-6
	④	.125	1-5747871-4
THREADED INSERTS	③	.125	1-5747871-3
	④	.125	5747871-8
φ.120 HOLE	④	.170	5747871-4
	④	.125	5747871-2
HARDWARE	CONTACT FINISH	A	PART NO

**COPYRIGHT 2005
 TYCO ELECTRONICS CORP
 ALL RIGHTS RESERVED**

THIS DRAWING IS A CONTROLLED DOCUMENT.

DIMENSIONS: INCHES	TOLERANCES UNLESS OTHERWISE SPECIFIED:	DIN 9 LATTUCA 28SEP05	tyco Electronics	Tyco Electronics Corporation Harrisburg, PA 17105-3608
0 PLC ± -	1 PLC ± -	CHK S. BOLASH 28SEP05	APVD M. WALMSLEY 28SEP05	NAME
2 PLC ± .005	3 PLC ± -	PRODUCT SPEC 108-40025		
4 PLC ± -	ANGLES ± ±	APPLICATION SPEC 114-40023		
MATERIAL	FINISH	SIZE	SCALE CODE	DRAWING NO
①	②	A1	00779	5747871
CUSTOMER DRAWING		SCALE	SHEET	REV
		1:1	1 of 1	A