

Distributed by:

JAMECO[®]
ELECTRONICS

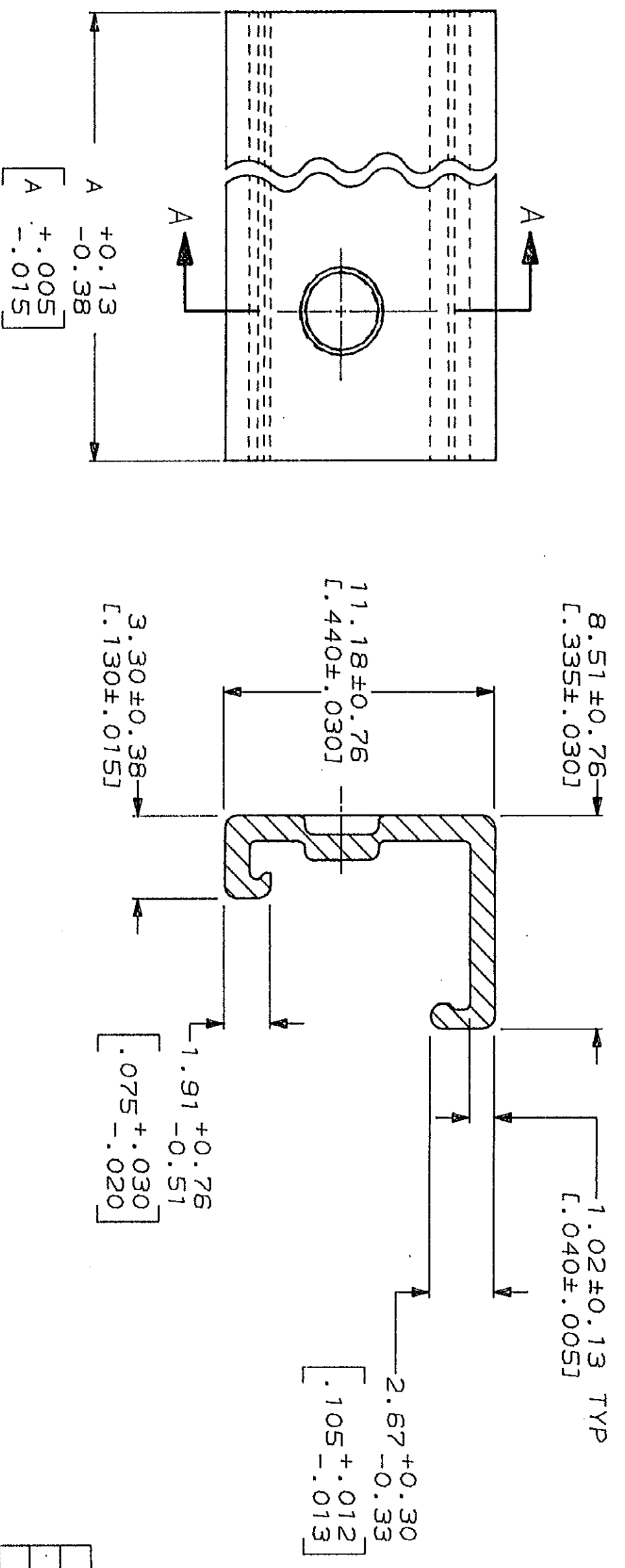
www.Jameco.com ♦ 1-800-831-4242

The content and copyrights of the attached
material are the property of its owner.

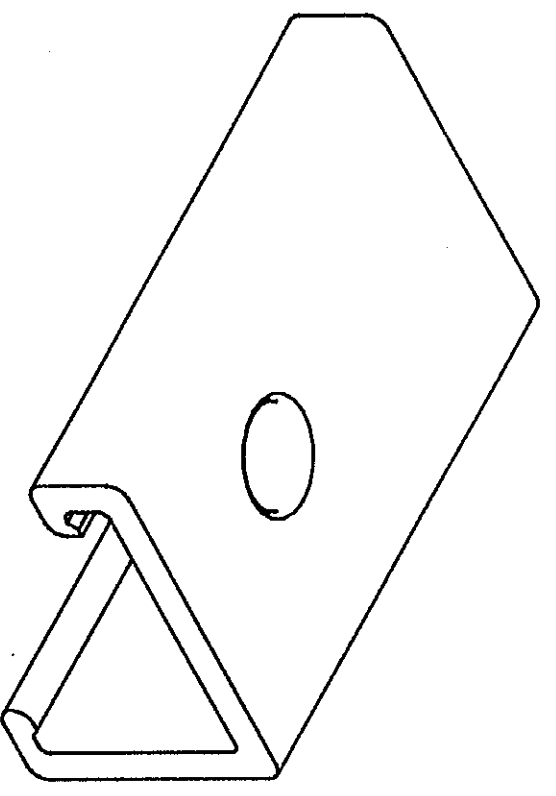
Jameco Part Number 755964

LOC	DIST	P	F	ZONE	LTR	REV AND REDWN PER ECN CM-11	DESCRIPTION	DATE	APPRO
CM	54				L			3-27-91	TS RS

1. DIMENSIONS IN BRACKETS ARE IN INCHES.



SECTION A-A



3-DIMENSIONAL MODEL
NTS

QTY	DESCRIPTION	UNIT	WEIGHT	SCALE	SIZE	CAGE CODE	DRAWING NO	PART NO
24	CIRCUIT ASSY		95.10	5:1	C	00779	640551	2-640551-4
23	CIRCUIT ASSY		91.14	5:1	C	00779	640551	2-640551-3
22	CIRCUIT ASSY		87.17	5:1	C	00779	640551	2-640551-2
21	CIRCUIT ASSY		83.21	5:1	C	00779	640551	2-640551-1
20	CIRCUIT ASSY		79.25	5:1	C	00779	640551	2-640551-0
19	CIRCUIT ASSY		75.29	5:1	C	00779	640551	1-640551-9
18	CIRCUIT ASSY		71.32	5:1	C	00779	640551	1-640551-8
17	CIRCUIT ASSY		67.36	5:1	C	00779	640551	1-640551-7
16	CIRCUIT ASSY		63.40	5:1	C	00779	640551	1-640551-6
15	CIRCUIT ASSY		59.44	5:1	C	00779	640551	1-640551-5
14	CIRCUIT ASSY		55.47	5:1	C	00779	640551	1-640551-4
13	CIRCUIT ASSY		51.51	5:1	C	00779	640551	1-640551-3
12	CIRCUIT ASSY		47.55	5:1	C	00779	640551	1-640551-2
11	CIRCUIT ASSY		43.59	5:1	C	00779	640551	1-640551-1
10	CIRCUIT ASSY		39.62	5:1	C	00779	640551	1-640551-0
9	CIRCUIT ASSY		35.66	5:1	C	00779	640551	640551-9
8	CIRCUIT ASSY		31.70	5:1	C	00779	640551	640551-8
7	CIRCUIT ASSY		27.74	5:1	C	00779	640551	640551-7
6	CIRCUIT ASSY		23.77	5:1	C	00779	640551	640551-6
5	CIRCUIT ASSY		19.81	5:1	C	00779	640551	640551-5
4	CIRCUIT ASSY		15.85	5:1	C	00779	640551	640551-4
3	CIRCUIT ASSY		11.89	5:1	C	00779	640551	640551-3
2	CIRCUIT ASSY		7.92	5:1	C	00779	640551	640551-2

DO NOT SCALE PRINT.
 UNLESS SPECIFIED
 DIMENSIONS IN mm (INCHES)
 TOLERANCES ON:
 2 PLC DEC ± .015
 3 PLC DEC ± .015
 ANGLES ± .5°
 MATERIAL
 POLYESTER, UL 94V-0
 FINISH
 NATURAL

DR *Beck* 4-2-91
 CHK *W. Long* 4-5-91
 APPD *W. Miller* 4-10-91
 NAME
AMP
 AMP Incorporated
 Harrisburg, PA 17105-3608
 COVER, MTA 156

