

Distributed by:

JAMECO[®]
ELECTRONICS

www.Jameco.com ♦ 1-800-831-4242

The content and copyrights of the attached
material are the property of its owner.

Jameco Part Number 794120

FEATURES AND SPECIFICATIONS

Features and Benefits

- Wire-to-wire plug
- Terminal Position Assurance (TPA) allows the terminal to be fully seated in the housing assuring that it will not back out during high vibration applications
- TPA key is sold individually to meet customer-specific needs
- Optional snap-on ears for panel mounting
- Contrasting color (white) TPA/CPA for high visibility

Reference Information

Product Specification: PS-5556-0003
 Packaging: Tray and bag
 UL File No.: E29179
 CSA File No.: LR19980
 TUV License No.: R75142
 Use With: Standard Mini-Fit terminals
 Mates With: [30067](#) housing
 Designed In: Millimeters

Mechanical

Contact Insertion Force: 1.5kg max.
 Contact Retention to Housing: 3.0kg min.
 Wire Pull-Out Force: 9.0kg min.
 Mating Force: 0.7kg (1.54 lb) max.
 Unmating Force: 0.35kg (0.7 lb) min.
 Normal Force: 200g min.
 Durability: 30 cycles

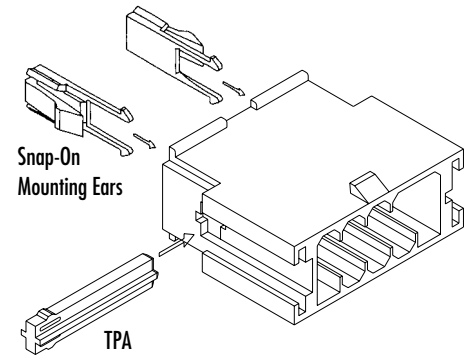
Physical

Housing: Black polyester, UL 94V-0
 Contact: Brass or Phosphor Bronze
 Plating: Tin, select Gold and overall Gold
 Operating Temperature: -40 to +105°C

molex® 4.20mm (.165") Pitch Mini-Fit, TPA™ Plug

30068

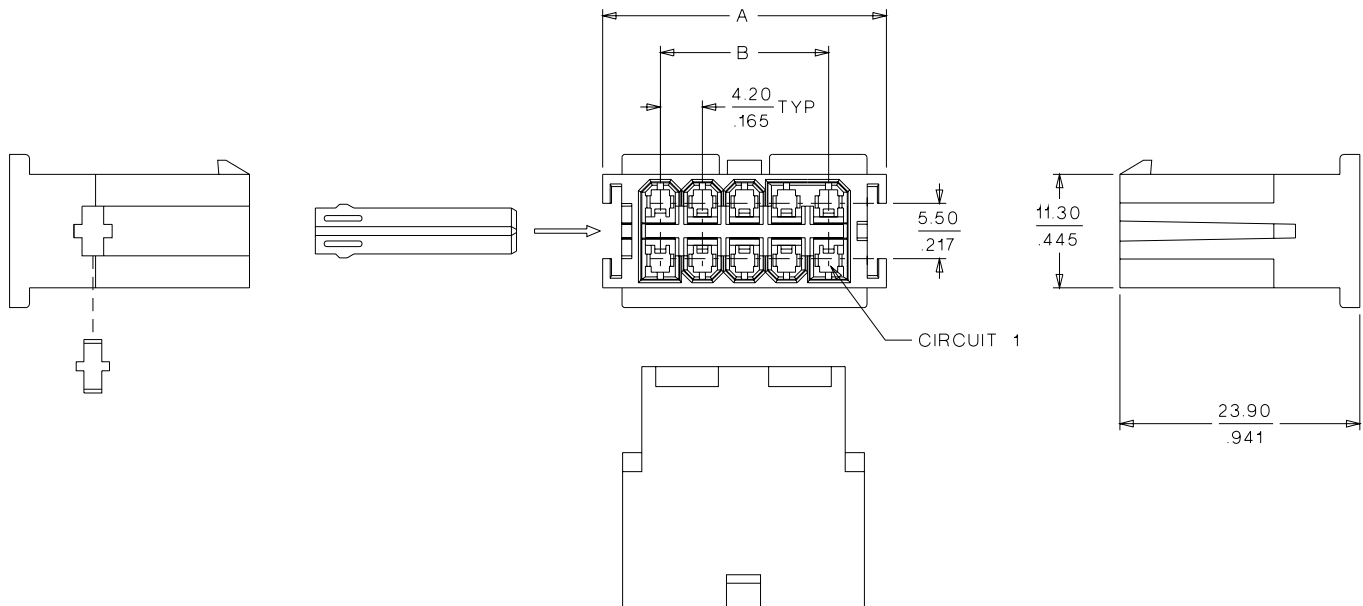
Dual Row with Secondary Terminal Retention



Power Connectors

F

CATALOG DRAWINGS (FOR REFERENCE ONLY)



ORDERING INFORMATION AND DIMENSIONS

| Circuits | Plug Order No. | Terminal Position Assurance | Dimension | | Snap-on Panel Mounting Ears 43130 |
|----------|----------------|-----------------------------|---------------|---------------|--------------------------------------|
| | | | A | B | |
| 2 | • 15-97-6021* | • 15-97-9041† | 11.86 (.467) | | 43130-0001‡ |
| 4 | • 15-97-6041 | • 15-97-9041 | 11.86 (.467) | 8.01 (.315) | |
| 6 | • 15-97-6061 | • 15-97-9061 | 16.08 (.633) | 12.21 (.481) | |
| 8 | • 15-97-6081 | • 15-97-9081 | 20.27 (.798) | 16.41 (.646) | |
| 10 | • 15-97-6101 | • 15-97-9101 | 24.26 (.963) | 20.61 (.811) | |
| 12 | • 15-97-6121 | • 15-97-9121 | 28.68 (1.129) | 24.81 (.977) | |
| 16 | • 15-97-6161 | • 15-97-9161 | 37.06 (1.459) | 33.21 (1.307) | |

• US Standard Product, available through Molex franchised distributors

* Receptacles have side pull tabs for use with strain reliefs

† The same TPA is used for both the 2 and 4 circuit plugs

‡ Two required per plug



PRODUCT SPECIFICATION

MINI-FIT TPA

1.0 SCOPE

This Product Specification covers performance requirements for the MINI-FIT TPA 4.20 mm (.165 inch) centerline (pitch) printed circuit board (PCB) connector series with Tin or Gold plating, and The MINI-FIT TPA connector series terminated with 16 to 28 AWG wire using Crimp technology with Tin or Gold plating.

2.0 PRODUCT DESCRIPTION

2.1 PRODUCT NAME AND SERIES NUMBER (S)

| <u>PRODUCT NAME</u> | <u>PART NUMBER</u> |
|--|--------------------|
| Female Crimp Terminal | 5556-**** |
| Male Crimp Terminal | 5558-**** |
| Receptacle Housing | 30067-**** |
| Plug Housing | 30068-**** |
| Vertical Header Assembly | 30069-**** |
| Vertical Header Assembly | 44482-**** |
| Right Angle Header Assembly | 30070-**** |
| Right Angle Header Assembly | 44483-**** |
| Terminal Position Assurance Key (TPA) | 30072-* |
| Connector Position Assurance Key (CPA) | 30071 |

2.2 DIMENSIONS, MATERIALS, PLATINGS AND MARKINGS

See the appropriate sales drawings for the information on dimensions, materials, platings and markings.

2.3 SAFETY AGENCY APPROVALS

UL File #E29179
CSA Certificate #LR 19980
TUV Certificate #R75142-8

3.0 APPLICABLE DOCUMENTS AND SPECIFICATIONS

See sales drawings and the other sections of this specification for the necessary referenced documents and specifications

4.0 RATINGS

4.1 VOLTAGE

600 Volts AC (RMS) (or 600 Volts DC)

4.2 CURRENT AND APPLICABLE WIRES

| | |
|---|-------------------------------|
| Maximum Insulation Diameter and Applicable Wire Gauges | 16 AWG: 3.10/. 122 MAXIMUM |
| | 18-24 AWG: 3.10/. 122 MAXIMUM |
| | 22-28 AWG: 1.80/. 071 MAXIMUM |

| | | | |
|--|---|--|------------------------------------|
| REVISION: C | ECR/ECN INFORMATION: EC No: UCP2004-0947 DATE: 2003 / 11 / 14 | TITLE: PRODUCT SPECIFICATION FOR MINI-FIT TPA CONNECTOR SYSTEM | SHEET No. 1 of 5 |
| DOCUMENT NUMBER: PS-5556-003 | CREATED / REVISED BY: M. BANDURA | CHECKED BY: M. BANDURA | APPROVED BY: Y. MARGULIS |



PRODUCT SPECIFICATION

4.2 CURRENT AND APPLICABLE WIRES (continued)

| MAXIMUM CURRENT RATING (Amperes) | | | | | | | | | |
|----------------------------------|-------|-------|--------|---------|------------------|-------|-------|--------|---------|
| Brass | | | | | Phosphor Bronze | | | | |
| Wire \ Ckt. Size | 2 & 3 | 4 - 6 | 7 - 10 | 12 - 24 | Wire \ Ckt. Size | 2 & 3 | 4 - 6 | 7 - 10 | 12 - 24 |
| AWG #16 | 9 | 8 | 7 | 6 | AWG #16 | 8 | 7 | 6 | 5 |
| AWG #18 | 9 | 8 | 7 | 6 | AWG #18 | 8 | 7 | 6 | 5 |
| AWG #20 | 7 | 6 | 5 | 5 | AWG #20 | 6 | 5 | 4 | 4 |
| AWG #22 | 5 | 4 | 4 | 4 | AWG #22 | 4 | 3 | 3 | 3 |
| AWG #24 | 4 | 3 | 3 | 3 | AWG #24 | 3 | 2 | 2 | 2 |
| AWG #26 | 3 | 2 | 2 | 2 | AWG #26 | 2 | 1 | 1 | 1 |
| AWG #28 | 2 | 1 | 1 | 1 | AWG #28 | 1 | 1 | 1 | 1 |

4.3 TEMPERATURE

Operating: * - 40°C to + 105°C

Nonoperating: - 40°C to + 105°C

*Including 30°C terminal temperature at rated current

5.0 PERFORMANCE

5.1 ELECTRICAL REQUIREMENTS

| ITEM | DESCRIPTION | TEST CONDITION | REQUIREMENT |
|------|---|--|--------------------------------------|
| 1 | Contact Resistance (Low Level) | Mate connectors: apply a maximum voltage of 20 mV and a current of 100 mA. Wire resistance shall be removed from the measured value. | 10 milliohms MAXIMUM [initial] |
| 2 | Contact Resistance @ Rated Current | Mate connectors: apply a maximum voltage of 20 mV at rated current. | 10 milliohms MAXIMUM [initial] |
| 3 | Contact Resistance of Wire Termination (Low Level) | Terminate the applicable wire to the terminal and measure wire using a voltage of 20 mV and a current of 100 mA. | 5 milliohms MAXIMUM [initial] |
| 4 | Insulation Resistance | Mate connectors: apply a voltage of 500 VDC between adjacent terminals and between terminals to ground. | 1000 Megohms MINIMUM |

| | | | |
|--------------------|---|--|--------------------|
| REVISION: | ECR/ECN INFORMATION: | TITLE: | SHEET No. |
| C | EC No: UCP2004-0947 DATE: 2003 / 11 / 14 | PRODUCT SPECIFICATION FOR MINI-FIT TPA CONNECTOR SYSTEM | 2 of 5 |
| DOCUMENT NUMBER: | CREATED / REVISED BY: | CHECKED BY: | APPROVED BY: |
| PS-5556-003 | M. BANDURA | M. BANDURA | Y. MARGULIS |



PRODUCT SPECIFICATION

5.1 ELECTRICAL REQUIREMENTS (continued)

| ITEM | DESCRIPTION | TEST CONDITION | REQUIREMENT |
|------|---|--|---|
| 5 | Dielectric Withstanding Voltage | Mate connectors: apply a voltage of 1500 VAC for 1 minute between adjacent terminals and between terminals to ground. | No breakdown. Current leakage < 5 mA |
| 6 | Temperature Rise (via Current Cycling) | Mate connectors. Measure the temperature rise at the rated current after 96 hours, during current cycling (45 minutes ON and 15 minutes OFF per hour) for 240 hours, and after final 96-hour steady state. | Temperature rise: +30°C MAXIMUM |

5.2 MECHANICAL REQUIREMENTS

| ITEM | DESCRIPTION | TEST CONDITION | REQUIREMENT |
|------|---|--|---|
| 1 | Terminal Mate and Unmate Forces | Insert and withdraw terminal (male to female) at a rate of 25 ± 6 mm (1 ± ¼ inch) per minute. | 14.7 N (3.30 lbf) MAXIMUM insertion force & 1.0 N (0.02 lbf) MINIMUM withdrawal force |
| 2 | Crimp Terminal Retention Force (in Housing) | Axial pullout force on the terminal in the housing at a rate of 25 ± 6 mm (1 ± ¼ inch) per minute. | 30 N (6.74 lbf) MINIMUM retention force |
| 3 | Crimp Terminal Retention Force (in Housing With TPA Key) | Axial pullout force on the terminal in the housing at a rate of 25 ± 6 mm (1 ± ¼ inch) per minute. | SECTION 5.2.7 |
| 4 | Durability | Mate connectors up to 30 cycles at a maximum rate of 10 cycles per minute prior to Environmental Tests. | 20 milliohms MAXIMUM |
| 5 | Vibration (Random) | Mate connectors and vibrate per EIA 364-28, test condition VII. | 10 milliohms MAXIMUM (change from initial) & Discontinuity < 1 microsecond |
| 6 | Shock (Mechanical) | Mate connectors and shock at 50 g's with ½ sine wave (11 milliseconds) shocks in the ±X, ±Y, ±Z axes, (18 shocks total). | 20 milliohms MAXIMUM & Discontinuity < 1 microsecond |

| | | | |
|--|---|---|------------------------------------|
| REVISION: C | ECR/ECN INFORMATION: EC No: UCP2004-0947 DATE: 2003 / 11 / 14 | TITLE: PRODUCT SPECIFICATION FOR MINI-FIT TPA CONNECTOR SYSTEM | SHEET No. 3 of 5 |
| DOCUMENT NUMBER: PS-5556-003 | CREATED / REVISED BY: M. BANDURA | CHECKED BY: M. BANDURA | APPROVED BY: Y. MARGULIS |



PRODUCT SPECIFICATION

5.2 MECHANICAL REQUIREMENTS (continued)

| | | | |
|----|--|--|---|
| 7 | Wire Pullout Force (Axial) | Apply an axial pullout force on the wire at a rate of 25 ± 6 mm ($1 \pm \frac{1}{4}$ inch). | 16 Awg = 88.0 N (19.8 lbf) Min. 18 Awg = 88.0 N (19.8 lbf) Min. 20 Awg = 59.0 N (13.3 lbf) Min. 22 Awg = 39.0 N (8.78 lbf) Min. 24 Awg = 29.0 N (6.52 lbf) Min. 26 Awg = 19.0 N (4.27 lbf) Min. 28 Awg = 9.80 N (2.20 lbf) Min. |
| 8 | Crimp Terminal Insertion Force (into Housing) | Apply an axial insertion force on the terminal at a rate of 25 ± 6 mm ($1 \pm \frac{1}{4}$ inch). | 15.0 N (3.37 lbf) MAXIMUM insertion force |
| 9 | Normal Force | Apply a perpendicular force. | 0.49 N (50 grams) MINIMUM [Gold (noble) plating] OR 1.47 N (150 grams) MINIMUM [Tin (non-noble) plating] |
| 10 | PCB Engagement and Separation Forces | Engage and separate a connector at a rate of 25 ± 6 mm ($1 \pm \frac{1}{4}$ inch) per minute. (Applies to parts with PCB retention features only) | 49.0 N (11.0 lbf) MAXIMUM insertion force & 10.0 N (2.24 lbf) MINIMUM withdrawal force |
| 12 | Receptacle Thumb Latch Strength (CPA not installed) | Mate connectors. Pull connectors apart at a rate of 25 ± 6 mm ($1 \pm \frac{1}{4}$ inch) per minute. | 68 N (15.3 lbf) |

5.3 ENVIRONMENTAL REQUIREMENTS

| ITEM | DESCRIPTION | TEST CONDITION | REQUIREMENT |
|------|--------------------------------|---|---|
| 1 | Thermal Shock | Mate connectors: expose for 5 cycles between temperatures -55 and 105°C; dwell 0.5 hours at each temperature. | 20 milliohms MAXIMUM Visual: No Damage Dielectric Strength per 5.1.5 Insulation Resistance per 5.1.4 |
| 2 | Thermal Aging | Mate connectors; expose to: 96 hours at $105 \pm 2^\circ\text{C}$ | 20 milliohms MAXIMUM & Visual: No Damage |
| 3 | Humidity (Steady State) | Mate connectors: expose to a temperature of $60 \pm 2^\circ\text{C}$ with a relative humidity of 90-95% for 96 hours. | 20 milliohms MAXIMUM Dielectric Strength per 5.1.5 Insulation Resistance per 5.1.4 Visual: No Damage |

| | | | |
|--------------------|---|--|--------------------|
| REVISION: | ECR/ECN INFORMATION: | TITLE: | SHEET No. |
| C | EC No: UCP2004-0947 DATE: 2003 / 11 / 14 | PRODUCT SPECIFICATION FOR MINI-FIT TPA CONNECTOR SYSTEM | 4 of 5 |
| DOCUMENT NUMBER: | CREATED / REVISED BY: | CHECKED BY: | APPROVED BY: |
| PS-5556-003 | M. BANDURA | M. BANDURA | Y. MARGULIS |



PRODUCT SPECIFICATION

| | | | |
|---|---------------|--------------|---|
| 4 | Solderability | Per SMES-152 | Solder coverage: 95% MINIMUM (per SMES-152) |
|---|---------------|--------------|---|

5.3 ENVIRONMENTAL REQUIREMENTS (continued)

| ITEM | DESCRIPTION | TEST CONDITION | REQUIREMENT |
|------|--|---|---|
| 5 | Solder Resistance | Dip connector terminal tails in solder: Solder Duration: 5 ± 0.5 seconds; Solder Temperature: $235 \pm 5^\circ\text{C}$ | Visual: No Damage to insulator material |
| 6 | Cold Resistance | Mate connectors: Duration: 96 hours; Temperature: $-40 \pm 3^\circ\text{C}$ | 20 milliohms MAXIMUM Visual: No Damage |
| 7 | Corrosive Atmosphere: Sulfur Dioxide Gas (SO ₂) | Mate connectors: Duration: 24 hours exposure. Atmosphere: 50 parts per million (ppm) SO ₂ Gas. Temperature: $40 \pm 3^\circ\text{C}$ | 20 milliohms MAXIMUM Visual: No damage |

6.0 PACKAGING

Parts shall be packaged to protect against damage during handling, transit and storage.

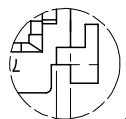
| | | | |
|--|---|--|------------------------------------|
| REVISION: C | ECR/ECN INFORMATION: EC No: UCP2004-0947 DATE: 2003 / 11 / 14 | TITLE: PRODUCT SPECIFICATION FOR MINI-FIT TPA CONNECTOR SYSTEM | SHEET No. 5 of 5 |
| DOCUMENT NUMBER: PS-5556-003 | CREATED / REVISED BY: M. BANDURA | CHECKED BY: M. BANDURA | APPROVED BY: Y. MARGULIS |

| CKT. SIZE | ENG. NO. | EDP. NO. | DIM. "A" REF. | DIM. "B" |
|-----------|----------|----------|---------------|------------------|
| J | 2 | 30068-2 | 15-97-6021 | ---- (11.86) |
| | 4 | 30068-4 | 15-97-6041 | .165 (4.20) |
| | 6 | 30068-6 | 15-97-6061 | .331 (8.40) |
| I | 8 | 30068-8 | 15-97-6081 | .496 (12.60) |
| | 10 | 30068-10 | 15-97-6101 | .661 (16.80) |
| | 14 | 30068-14 | NOT TOOLED | .992 (25.20) |
| H | 16 | 30068-16 | 15-97-6161 | 1.157 (29.40) |

SEE SHT. 2 FOR 18 THRU 24 CKT'S.

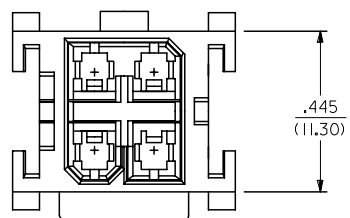
LEGEND:

30068 - *
CIRCUIT SIZE (2-24)



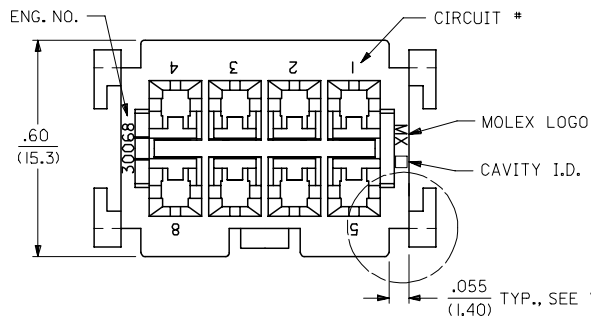
.04 (1.0) ON 6, 12 & 16 CKT. PARTS ONLY.

VIEW "A"



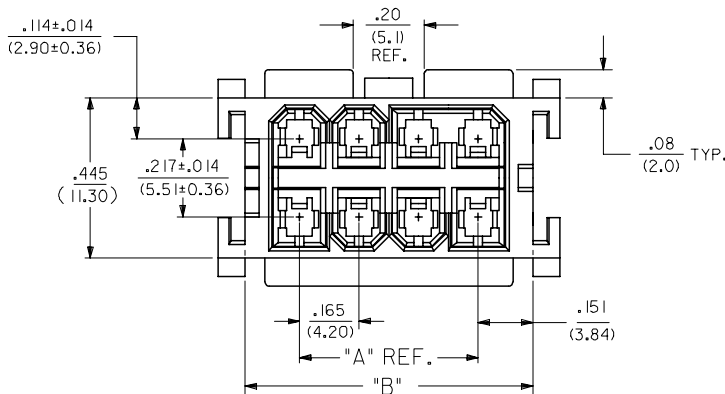
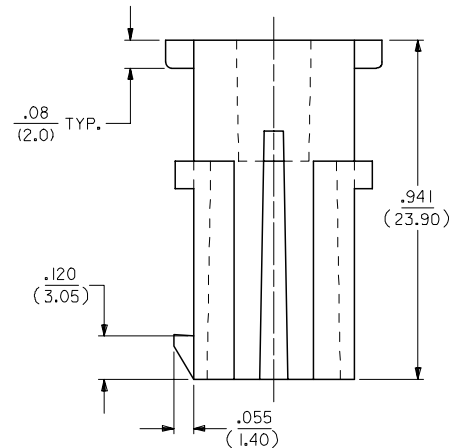
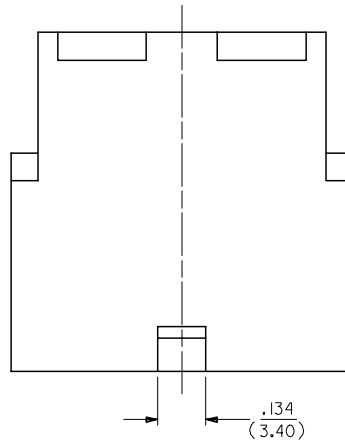
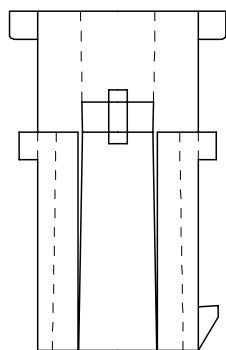
4 CIRCUIT VERSION

SEE SHT. #3 FOR PARTS WITH MOUNTING EARS



NOTES:

1. MATERIAL: UNFILLED POLYESTER, U.L. 94V-0.
2. COLOR: MOLDED BLACK.
3. HOUSING TO BE USED WITH TERMINAL #5558.
4. HOUSING MATES WITH RECEPTACLE #30067.
5. PRODUCT SPECIFICATION: PS-5556-003.
6. 2 THRU 10 AND 14 THRU 24 CKT. HOUSING TO BE USED WITH T.P.A. NO. 30072-*. 12 CKT. HOUSING TO BE USED WITH T.P.A. NO. 43568-12*. REFER TO DRAWING SDMS-30068-1* FOR ADDITIONAL INFORMATION.

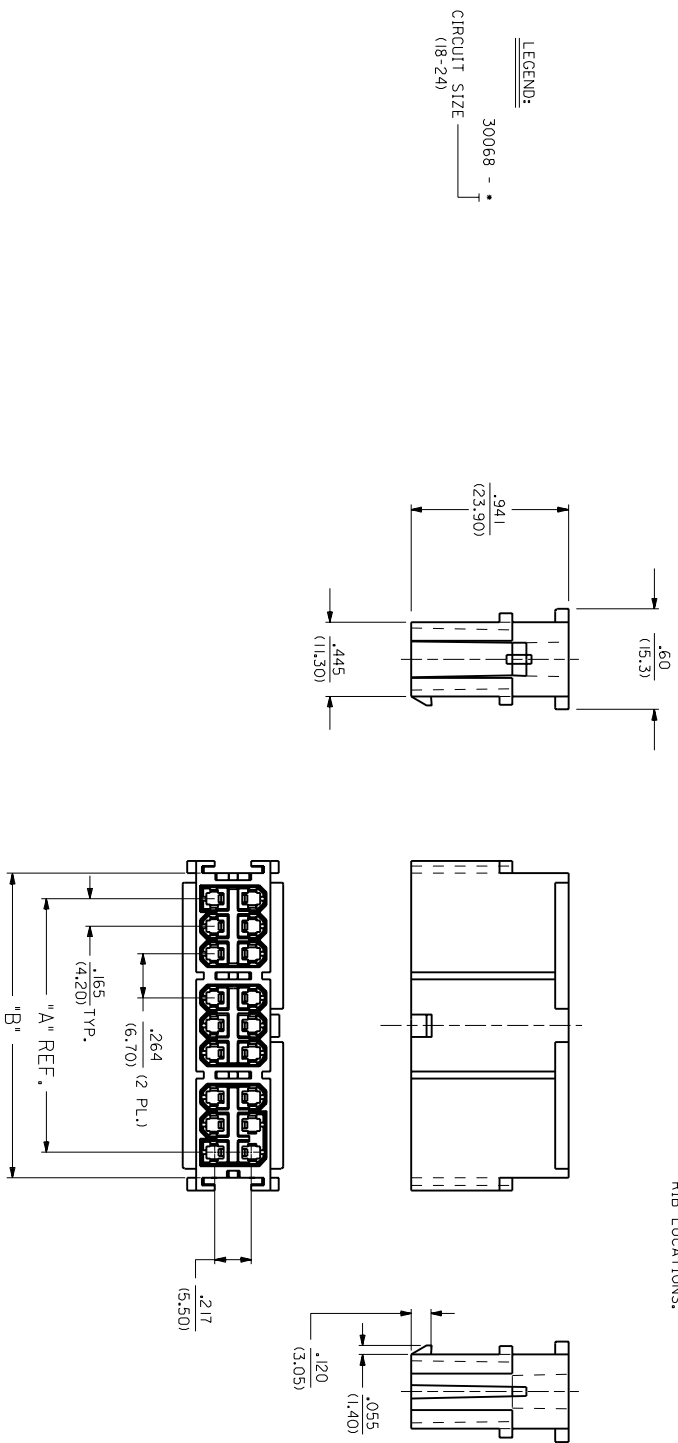


| | |
|---|-----------|
| 3 | A |
| 2 | P1 |
| 1 | R1 |
| | SHEET REV |

| | | | | | | |
|---|-----------------------------|--|-----------------|------------|---|------------------------|
| REMOVE 12 CKT FC NO: UCP2006-2146 DRAWN: ADRIANOL 2006/03/14 CHKD: GPOLGAR 2006/03/15 APPR: JCOMERCJ 2006/03/15 | QUALITY SYMBOLS =0 =0 | GENERAL TOLERANCES (UNLESS SPECIFIED) | DIMENSION STYLE | SCALE | DESIGN UNITS | THIRD ANGLE PROJECTION |
| | | 4 PLACES ± --- ± --- 3 PLACES ± --- ± .010 2 PLACES ± 0.25 ± .014 1 PLACE ± 0.36 ± --- ANGULAR ±1/2° | IN/MM | 4:1 | METRIC | ⊙ |
| R1 | DESCRIPTION | DRAFT WHERE APPLICABLE MUST REMAIN WITHIN DIMENSIONS | DRAWN BY | DATE | TITLE | |
| | | SEE CHART | DMF | 1989/10/26 | MINI FIT TPA PLUG HSG 2 THRU 24 CIRCUITS WITH OR W/O MTG EARS | |
| | | | CHECKED BY | DATE | MATERIAL NO. | |
| | | | TGP | 1989/10/26 | DOCUMENT NO. | |
| | | | APPROVED BY | DATE | SHEET NO. | |
| | | | SC | 1989/10/26 | 1 OF 3 | |
| | | | | | MOLLEX MOLEX INCORPORATED | |
| | | | | | SD-30068-* | |

| CKT. NO. | ENG. NO. | PART NO. | DIM. A | DIM. B | RIBS LOCATED BETWEEN CKT'S. |
|----------|----------|------------|------------------|------------------|-----------------------------|
| 18 | 30068-18 | NOT TOOLED | 1.520 (38.60) | 1.822 (46.28) | 3, 4 & 6, 7 |
| 20 | 30068-20 | NOT TOOLED | 1.685 (42.80) | 1.987 (50.46) | 3, 4 & 7, 8 |
| 22 | 30068-22 | NOT TOOLED | 1.850 (47.00) | 2.152 (54.56) | 4, 5 & 7, 8 |
| 24 | 30068-24 | NOT TOOLED | 2.016 (51.20) | 2.318 (58.88) | 4, 5 & 8, 9 |

SEE SHT. 1 FOR 2 THRU 16 CKT'S.



LEGEND:
 30068 - *
 CIRCUIT SIZE (18-24)

| REV. | DATE | DESCRIPTION | BY | CHKD. |
|------|---------|---|----|-------|
| 1 | 1/10/92 | MINI-FIT T.P.A. PLUG HOUSING 2 THRU 24 CIRCUITS, WITH OR WITHOUT MOUNTING EARS. | CP | CP |
| 2 | | | | |
| 3 | | | | |
| 4 | | | | |
| 5 | | | | |
| 6 | | | | |
| 7 | | | | |
| 8 | | | | |
| 9 | | | | |
| 10 | | | | |
| 11 | | | | |
| 12 | | | | |
| 13 | | | | |

| REV. | DATE | DESCRIPTION | BY | CHKD. |
|------|------|--------------|----|-------|
| P1 | | SEE SHEET #1 | | |
| O | | SEE SHT. 1 | | |
| N1 | | SEE SHT. 1 | | |
| N | | SEE SHT. 1 | | |
| M | | SEE SHEET 1 | | |
| K | | SEE SHEET 1 | | |

| REV. | DATE | DESCRIPTION | BY | CHKD. |
|------|------|--------------|----|-------|
| P1 | | SEE SHEET #1 | | |
| O | | SEE SHT. 1 | | |
| N1 | | SEE SHT. 1 | | |
| N | | SEE SHT. 1 | | |
| M | | SEE SHEET 1 | | |
| K | | SEE SHEET 1 | | |

| REV. | DATE | DESCRIPTION | BY | CHKD. |
|------|------|--------------|----|-------|
| P1 | | SEE SHEET #1 | | |
| O | | SEE SHT. 1 | | |
| N1 | | SEE SHT. 1 | | |
| N | | SEE SHT. 1 | | |
| M | | SEE SHEET 1 | | |
| K | | SEE SHEET 1 | | |

| REV. | DATE | DESCRIPTION | BY | CHKD. |
|------|------|--------------|----|-------|
| P1 | | SEE SHEET #1 | | |
| O | | SEE SHT. 1 | | |
| N1 | | SEE SHT. 1 | | |
| N | | SEE SHT. 1 | | |
| M | | SEE SHEET 1 | | |
| K | | SEE SHEET 1 | | |

| REV. | DATE | DESCRIPTION | BY | CHKD. |
|------|------|--------------|----|-------|
| P1 | | SEE SHEET #1 | | |
| O | | SEE SHT. 1 | | |
| N1 | | SEE SHT. 1 | | |
| N | | SEE SHT. 1 | | |
| M | | SEE SHEET 1 | | |
| K | | SEE SHEET 1 | | |

REVISIONS ONLY ON CAD SYSTEM

MINI-FIT T.P.A. PLUG HOUSING 2 THRU 24 CIRCUITS, WITH OR WITHOUT MOUNTING EARS.

MOLEX INCORPORATED
 1350 S. 48th St.
 Phoenix, AZ 85042

SD-30068-1
 SHEET NO. 2
 DATE 1/10/92

SEE CHART

SCALE 2:1

REVISIONS

BY DATE

CHKD.

DATE

DESCRIPTION

BY DATE

CHKD.

DATE

DESCRIPTION

BY DATE

CHKD.

DATE

DESCRIPTION

BY DATE

CHKD.

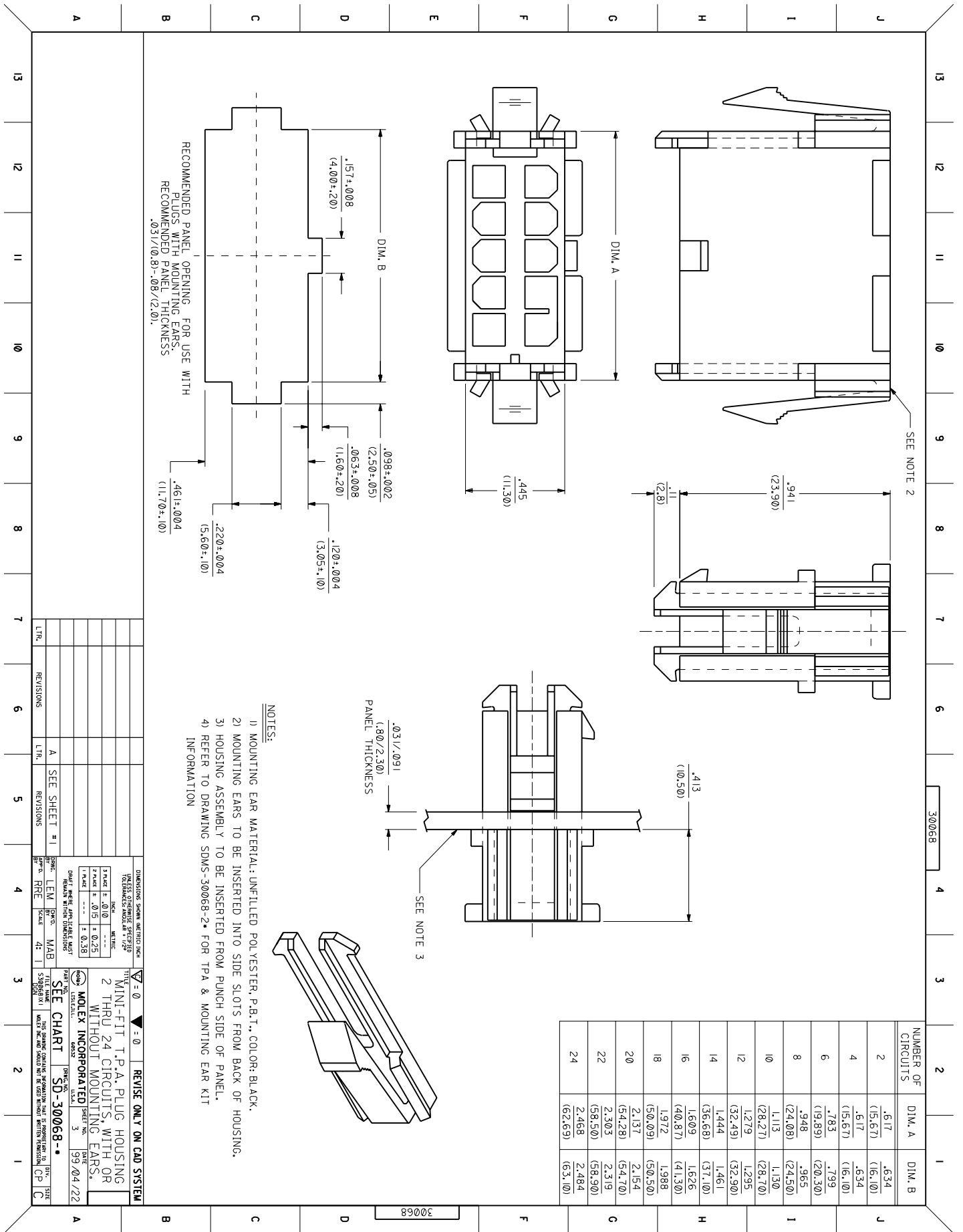
DATE

DESCRIPTION

BY DATE

CHKD.

DATE



- NOTES:**
- 1) MOUNTING EAR MATERIAL: UNFILLED POLYESTER, P.B.T., COLOR: BLACK.
 - 2) MOUNTING EARS TO BE INSERTED INTO SIDE SLOTS FROM BACK OF HOUSING.
 - 3) HOUSING ASSEMBLY TO BE INSERTED FROM PUNCH SIDE OF PANEL.
 - 4) REFER TO DRAWING SDMS-30068-2* FOR T.P.A. & MOUNTING EAR KIT INFORMATION

| NUMBER OF CIRCUITS | DIM. A | DIM. B |
|--------------------|------------------|------------------|
| 2 | .617 (15.67) | .634 (16.10) |
| 4 | .617 (15.67) | .634 (16.10) |
| 6 | .783 (19.88) | .799 (20.30) |
| 8 | .948 (24.08) | .965 (24.50) |
| 10 | 1.113 (28.27) | 1.130 (28.70) |
| 12 | 1.279 (32.49) | 1.295 (32.90) |
| 14 | 1.444 (36.68) | 1.461 (37.10) |
| 16 | 1.609 (40.87) | 1.626 (41.30) |
| 18 | 1.972 (50.09) | 1.988 (50.50) |
| 20 | 2.137 (54.28) | 2.154 (54.70) |
| 22 | 2.303 (58.50) | 2.319 (58.90) |
| 24 | 2.468 (62.69) | 2.484 (63.10) |

REVISIONS ONLY ON CAD SYSTEM

MINI-FIT T.P.A. PLUG HOUSING
2 THRU 24 CIRCUITS, WITH OR WITHOUT MOUNTING EARS.

MOLEX INCORPORATED
SHEET NO. 3
DATE 99/04/22

SEE CHART SD-30068-1

DATE: 03/08/98
DRAWN BY: J. B. BROWN
CHECKED BY: J. B. BROWN
APPROVED BY: J. B. BROWN

| REV. | DATE | DESCRIPTION |
|------|------|--------------|
| 1 | | SEE SHEET #1 |

| REV. | DATE | DESCRIPTION |
|------|------|--------------|
| 1 | | SEE SHEET #1 |