

Distributed by:

JAMECO[®]
ELECTRONICS

www.Jameco.com ♦ 1-800-831-4242

The content and copyrights of the attached
material are the property of its owner.

Jameco Part Number 795481

FEATURES AND SPECIFICATIONS

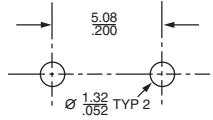


Quick Disconnect Terminals For PC Board



Molex offers a large selection of Standard Printed Circuit Board-Mountable quick disconnect terminals. Some products offer a tab support mounting feature providing increased mounting reliability and terminal strength. Products are available as strip applied and loose piece. All products can be easily inserted into printed circuit boards using widely available, industry standard bench-type, and fully-automated XY insertion tooling.

Molex PC Board Quick Disconnect terminals are available in tab sizes ranging from .110 x .020" to .250 x .032". Products are available in both vertical and right angle mounting configurations. All products are manufactured to NEMA specifications and are UL and CSA recognized.

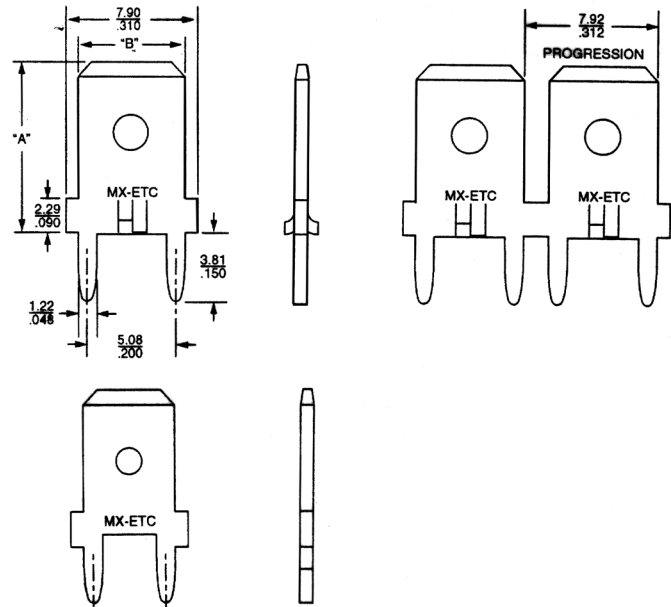


Recommended PCB Hole Layout

Features

- Material — Brass
- Thickness — 0.813mm (.032")
- Tab conforms to NEMA specifications
- Plating — Tin/Lead 150 μ " (3.81 μ m) min. thickness (Strip)
- Plating — Tin (Loose)

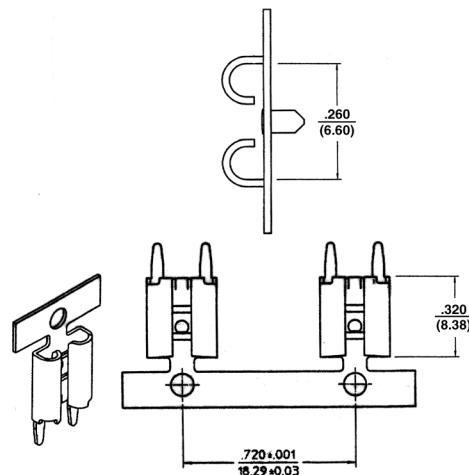
Order No.	Carrier	Tab Support	Dimension		Tab Thickness	
			A	B		
19705-4001	Loose	Yes	14.20 (.560)	6.35 (.250)	.032 (0.81)	
19705-4003	Strip					
19705-4201	Loose		10.30 (.405)			
19705-4203	Strip					
19705-4301	Loose	No	10.30 (.405)	4.75 (.187)	.032 (0.81)	
19705-4303	Strip					
19705-4101	Loose	Yes	14.20 (.560)			
19705-4103	Strip					
19708-4001	Loose	No	9.14 (.360)			.020 (0.51)
19708-4003	Strip					.032 (0.81)
19708-4011	Loose					.032 (0.81)
19708-4013	Strip					.020 (0.51)
19708-4021	Loose	Yes	8.77 (.345)			.020 (0.51)
19708-4023	Strip					.032 (0.81)
19708-4031	Loose					.032 (0.81)
19708-4033	Strip					.032 (0.81)



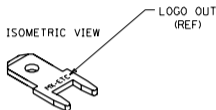
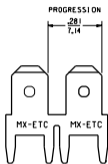
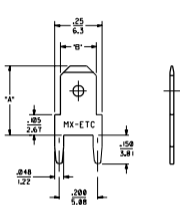
- .250" x .025
- Vertical Mount
- Standard tab support keeps receptacle stable
- Plating: Tin/Lead

Order No.	Carrier	Tab Support	Dimension			
			Plating	Thickness	PCB Hole Spacing	Leg Width
19704-0002	Strip	Yes	Tin/Lead	.016	.200	.05
19704-0004	Loose		Tin/Lead	(0.41)	(5.08)	(1.35)

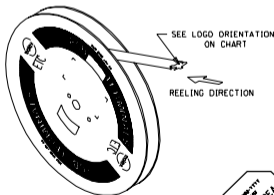
PCB Receptacle for ATC Fuse Connections



MATERIAL NUMBER	ENGINEERING NUMBER	CUSTOMER NUMBER	CARRIER	FINISH SEE NOTE 6 & 7.	DIMENSION "A"	DIMENSION "B"	TAB THICKNESS	LOGO ORIENTATION
197084001	19708-4001	4002	LOOSE	TIN/LEAD	.360	.187	.020	---
197084003	19708-4003	---	STRIP	TIN/LEAD	.360	.187	.020	IN
197084011	19708-4011	---	LOOSE	TIN/LEAD	.360	.187	.032	---
197084013	19708-4013	---	STRIP	TIN/LEAD	.360	.187	.032	IN
197084015	19708-4015	---	STRIP	TIN/LEAD	.360	.187	.032	IN



RECOMMENDED P.W.B. HOLE LAYOUT



- NOTES:
1. BARE EDGES PERMISSIBLE AT CARRIER CUT OFF.
 2. MATERIAL: BRASS.
 3. MATERIAL THICKNESS: $\pm .032 \pm .001 / (0.013 \pm 0.03)$
OR $\pm .020 \pm .001 / (0.51 \pm 0.03)$
 4. TAB CONFORMS TO NEMA SPECIFICATIONS.
 5. ALL DIMENSIONS AND NOTES ARE REFERENCE ONLY UNLESS NOTED.
 6. PLATING: $\geq 90/10$ TIN LEAD 150μ IN $(3.81 \mu$) MIN THICKNESS.
 7. FINISH: MATTE

CUSTOMER DRAWING

DRAWING SHEET INFORMATION		REVISE ONLY ON CAD SYSTEM	
DATE: 08/11/01	BY: RWD	DUICK DISCONNECT PCB MOUNTABLE	
DATE: 01/12/01	BY: RWD	.187 X .020 OR .032 TAB	
DATE: 01/12/01	BY: RWD	SEE CHART 50-19708-400	
DATE: 01/12/01	BY: RWD	SEE CHART 50-19708-400	
DATE: 01/12/01	BY: RWD	SEE CHART 50-19708-400	

REV	REVISIONS
E	ADDED FINISH ETC 08/11/01 BPC 5/21/2000
D	LOGO ORIENTATION ETC 08/11/01 2000/04/29 HEB
C	ADDED 4015 ETC 08/11/01 BPC 6/11/2000
B	REMOVE NON-PLATED PARTS FROM CHART ETC 08/11/01 2000/04/29 HEB
A	RELEASE TO CUSTOMER ETC 08/11/01 2000/04/29 HEB