

Distributed by:

**JAMECO**<sup>®</sup>  
ELECTRONICS

**www.Jameco.com ♦ 1-800-831-4242**

The content and copyrights of the attached  
material are the property of its owner.

Jameco Part Number 803436





# PRODUCT SPECIFICATION

## 5.0 PERFORMANCE

### 5.1 ELECTRICAL REQUIREMENTS

ITEM	DESCRIPTION	TEST CONDITION	REQUIREMENT
1	<b>Capacitance</b>	Measure between adjacent terminals	1.2 pf max
2	<b>Insulation Resistance</b>	Test between adjacent contact at 500 V DC for 1 minute, per (MIL-STD-1344 MTD 3001.1)	1000 Megaohms minimum
3	<b>Dielectric Strength</b>	Test between adjacent contact at 500VAC rms and 1 minute hold time.	No breakdown

### 5.2 MECHANICAL REQUIREMENTS

ITEM	DESCRIPTION	TEST CONDITION	REQUIREMENT
4	<b>Pin Retention Force in Housing</b>	Push pin axially from housing at a rate of 12.7mm/min (0.50 inch/min)	0.85 Kgf min

REVISION:	ECR/ECN INFORMATION:	TITLE:	SHEET No.
<b>B1</b>	EC No: <b>S2004-0868</b> DATE: <b>2004/07/20</b>	<b>2MM DUAL ROW OR SINGLE ROW (SMT/ VERTICAL/ RIGHT ANGLE) HEADER</b>	<b>2 of 3</b>
DOCUMENT NUMBER:	CREATED / REVISED BY:	CHECKED BY:	APPROVED BY:
<b>PS-87761-100</b>	<b>AI TING</b>	<b>KCLING</b>	<b>SKTOH</b>



# PRODUCT SPECIFICATION

## 5.3 ENVIRONMENTAL REQUIREMENTS

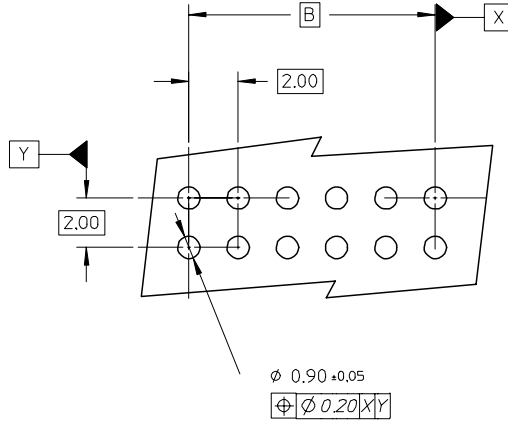
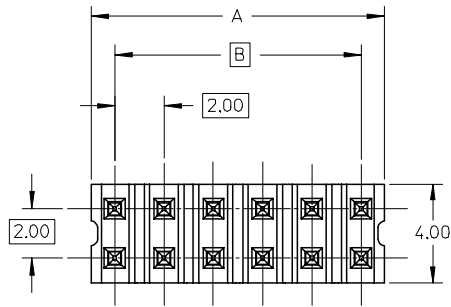
ITEM	DESCRIPTION	TEST CONDITION	REQUIREMENT
5	<b>Temperature Rise</b>	Apply 2 amps DC to the header and measure contact temperature rise for 48 hours	30°C maximum temperature rise above ambient.
6	<b>Solderability</b>	Solder Time: 5 ± 0.5 sec. Solder Temperature: 245 ±5 °C	Soldertail should have 95% continuous new solder coating coverage (Apply to non-kinked Soldertail only)
7	<b>Resistance to Soldering Heat (Wave Soldering) For Series a)87760, b)87758, 87830, 87761 c) Other series</b>	Sample mounted on PCB and subject to wave soldering,  a)Temperature : 260 ±5 °C for 12 ± 2 Sec b)Temperature : 245 ±5 °C for 3Sec c) Temperature : 245 ±5 °C for 5Sec	Appearance : No Damage
8	<b>Resistance to Solder Heat (Reflow) For Series 87759, 87762</b>	Sample mounted on PCB and subject to reflow, Temperature : 245 ±5 °C for 10 ±2 Sec	Appearance : No Damage

## 6.0 Packaging

Product shall be packaged and protected against damage during handling, transportation and storage.

<b>REVISION:</b> <b>B1</b>	<b>ECR/ECN INFORMATION:</b> EC No: <b>S2004-0868</b> DATE: <b>2004/07/20</b>	<b>TITLE:</b> <b>2MM DUAL ROW OR SINGLE ROW (SMT/ VERTICAL/ RIGHT ANGLE) HEADER</b>	<b>SHEET No.</b> <b>3 of 3</b>
<b>DOCUMENT NUMBER:</b> <b>PS-87761-100</b>		<b>CREATED / REVISED BY:</b> <b>AI TING</b>	<b>CHECKED BY:</b> <b>KCLING</b>
		<b>APPROVED BY:</b> <b>SKTOH</b>	

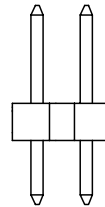
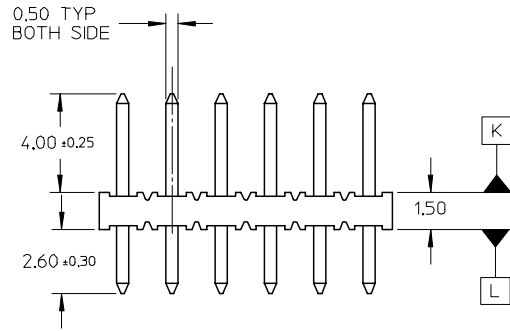
10 9 8 7 6 5 4 3 2 1



**LEGEND**  
 87758- \* \* \* \*  
 CKT SIZE (SEE SHT 2 TABLE) PLATING (SEE NOTE 2)

**NOTES:**

- MATERIAL:**  
 HOUSING: 30% G.F. NYLON 46, 94V-0, COLOR: BLACK  
 PIN: 0.50mm SQ. PHOSPHOR BRONZE 510
- PLATING:**  
 \*\*16 - 0.38um MIN GOLD IN CONTACT AREA.  
 TIN IN SOLDER AREA, BOTH OVER  
 NICKEL OVERALL.  
 \*\*17 - 0.76um MIN GOLD IN CONTACT AREA,  
 TIN IN SOLDER AREA, BOTH OVER  
 NICKEL OVERALL.  
 \*\*18 - 2.54um MIN TIN OVER  
 NICKEL OVERALL.
- 12 CKT USED FOR ILLUSTRATION ONLY
- PACKED IN POCKET TRAY
- PIN PUSHOUT FORCE: 1KG MIN IN EITHER DIRECTION
- CKT 4 AND 6 IS CUT FROM CKT 8 AND 12 RESPECTIVELY.  
 CKT 2 ARE CUT FROM ANY LARGER CKT SIZE.ROUGH EDGES  
 ARE EXPECTED ALONG THE CUTTING EDGES.
- PRODUCT SPEC PS-87761-100 APPLIES.
- RECOMMENDED PCB THICKNESS IS 1.60±0.10



$\phi 0.71 \pm 0.07$   
 $\phi \phi 0.30 \text{ (M) K}$



VIEW P

$\phi 0.71 \pm 0.07$   
 $\phi \phi 0.30 \text{ (M) L}$



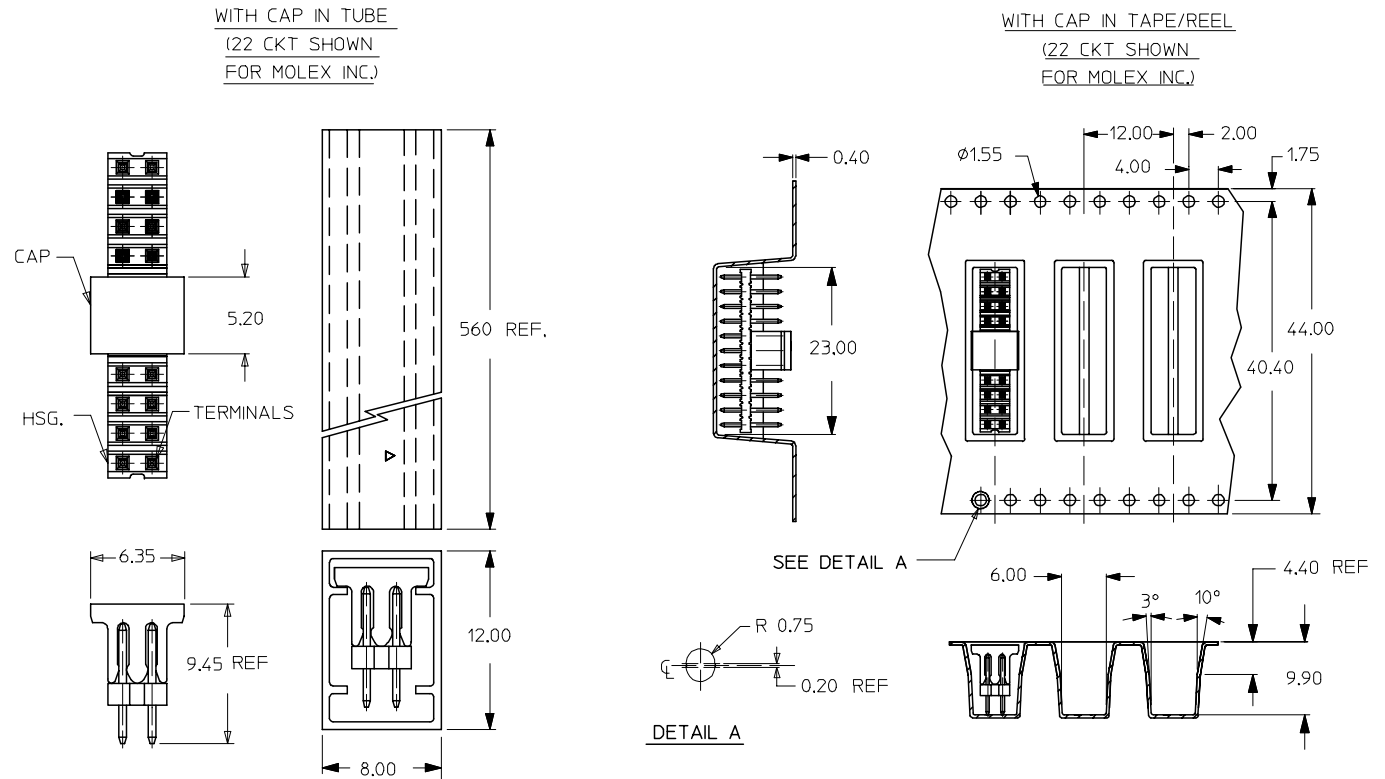
VIEW Q

EC NO: S2005-0715 2005/05/16 DRAWN:KCHO CHKD:PTLIM APPR:SCLOW 2005/05/18 2005/05/19	QUALITY SYMBOLS ▽=0 ∇=0	GENERAL TOLERANCES (UNLESS SPECIFIED)		DIMENSION STYLE MM ONLY	SCALE NTS	DESIGN UNITS METRIC	THIRD ANGLE PROJECTION
DESCRIPTION A2	REV	4 PLACES	± ---	± ---	DRAWN BY KSEE	DATE 2003/10/30	TITLE SALES DRAWING 2MM DUAL ROW SINGLE WAFER, VERTICAL T/H HDR
		3 PLACES	± ---	± ---	CHECKED BY KCL ING	DATE 2004/01/05	
		2 PLACES	± 0.20	± ---	APPROVED BY SKTOH	DATE 2004/01/05	MOLEX INCORPORATED
		1 PLACE	± ---	± ---	MATERIAL NO. SEE TABLE	DOCUMENT NO. SD-87758-107	
		ANGULAR ± 3 °		DRAFT WHERE APPLICABLE MUST REMAIN WITHIN DIMENSIONS		SHEET NO. 1 OF 2	
		SIZE A3		THIS DRAWING CONTAINS INFORMATION THAT IS PROPRIETARY TO MOLEX INCORPORATED AND SHOULD NOT BE USED WITHOUT WRITTEN PERMISSION			

9 8 7 6 5 4 3 2 1

PART NUMBER	CKT SIZE	A	B
87758-02**	2	NA	NA
87758-04**	4	NA	2.00
87758-06**	6	NA	4.00
87758-08**	8	7.90	6.00
87758-10**	10	9.90	8.00
87758-12**	12	11.90	10.00
87758-14**	14	13.90	12.00
87758-16**	16	15.90	14.00
87758-18**	18	17.90	16.00
87758-20**	20	19.90	18.00
87758-22**	22	21.90	20.00
87758-24**	24	23.90	22.00
87758-26**	26	25.90	24.00
87758-28**	28	27.90	26.00
87758-30**	30	29.90	28.00
87758-32**	32	31.90	30.00
87758-34**	34	33.90	32.00
87758-36**	36	35.90	34.00
87758-38**	38	37.90	36.00
87758-40**	40	39.90	38.00
87758-42**	42	41.90	40.00
87758-44**	44	43.90	42.00
87758-46**	46	45.90	44.00
87758-48**	48	47.90	46.00
87758-50**	50	49.90	48.00

CKT SIZE	PART NO. WITH CAP IN TUBE	PART NO. WITH CAP IN TAPE/REEL	PLATING TYPE
8	87758-0814	87758-0815	**16
22	87758-5126	87758-5111	MOLEX INC.



EC NO: S2005-0715 2005/05/16 DRAWN:KCHO 2005/05/18 CHKD:PTLIM 2005/05/19 APPR:SCLOW	QUALITY SYMBOLS ▽=0 ▽=0	GENERAL TOLERANCES (UNLESS SPECIFIED)		DIMENSION STYLE MM ONLY	SCALE NTS	DESIGN UNITS METRIC	THIRD ANGLE PROJECTION		
		4 PLACES ± --- ± --- 3 PLACES ± --- ± --- 2 PLACES ± 0.20 ± --- 1 PLACE ± --- ± ---	mm    INCH	DRAWN BY KSEE	DATE 2003/10/30	TITLE SALES DRAWING 2MM DUAL ROW SINGLE WAFER, VERTICAL T/H HDR			
		ANGULAR ± 3 °		CHECKED BY KCLING	DATE 2004/01/05	MOLEX INCORPORATED			
		DRAFT WHERE APPLICABLE MUST REMAIN WITHIN DIMENSIONS		APPROVED BY SKTOH	DATE 2004/01/05	MATERIAL NO. SEE TABLE	DOCUMENT NO. SD-87758-107	SHEET NO. 2 OF 2	