

Distributed by:

**JAMECO**<sup>®</sup>  
ELECTRONICS

**www.Jameco.com ♦ 1-800-831-4242**

The content and copyrights of the attached  
material are the property of its owner.

Jameco Part Number 803997



# TABLE OF CONTENTS

SECTION	PAGE
1.0 SCOPE .....	2
2.0 PRODUCT DESCRIPTION AND APPLICABLE DOCUMENTS.....	3
3.0 RATINGS .....	4
4.0 ELECTRICAL PERFORMANCE .....	5
5.0 MECHANICAL PERFORMANCE.....	6
6.0 ENVIRONMENTAL PERFORMANCE .....	7-8
7.0 PACKAGING .....	9
8.0 TEST GROUPS .....	10

## APPENDICES

APPENDIX A: INSERION/WITHDRAWAL GAUGE SPECIFICATION .....	11
APPENDIX B: RE-FLOW PROFILES.....	12
APPENDIX C: GLOW WIRE TEST POSITIONS .....	13

REVISE ON PC ONLY:		TITLE:	<b>PICOFLEX CONNECTOR SYSTEM PRODUCT SPECIFICATION</b>				
<b>P</b>	Text correction.  ECN E2007-0219 – J.Dennehy						
THIS DOCUMENT CONTAINS INFORMATION THAT IS PROPRIETARY TO MOLEX INC. AND SHOULD NOT BE USED WITHOUT WRITTEN PERMISSION							
REV.	DESCRIPTION						
	DESIGN CONTROL	STATUS	WRITTEN BY:	CHECKED BY:	APPROVED BY	DATE:	YR/MO/DAY
	MXI	RELEASED	J.Dennehy	D.Waszkiz	J.Dennehy	2006-07-20	
DOCUMENT NUMBER						FILENAME	SHEET
<b>PS-99020-0011</b>						PS990200011	1 of 13
ES-40000-3996 REV. A SHEET 3 95/MAR/10 EC U5-0926 DCBRD03.LWP							



### 1.0 SCOPE

This specification defines the performance characteristics for the PICOFLEX connector system.

REVISE ON PC ONLY:		TITLE:	<b>PICOFLEX CONNECTOR SYSTEM PRODUCT SPECIFICATION</b>	
<b>P</b>	SEE SHEET 1			
THIS DOCUMENT CONTAINS INFORMATION THAT IS PROPRIETARY TO MOLEX INC. AND SHOULD NOT BE USED WITHOUT WRITTEN PERMISSION				
REV.	DESCRIPTION			
DOCUMENT NUMBER <b>PS-99020-0011</b>		FILENAME PS990200011	SHEET 2 of 13	



**2.0 PRODUCT DESCRIPTION AND APPLICABLE DOCUMENTS**

Product Type	Series No.	Product Description	Sales Drawing
<b>PCB Headers</b>	90325	Vertical Thru Hole Header	SDA-90325
	90779	Vertical Thru Hole Header, High Temperature Thermoplastic	SDA-90779
	90715	Vertical Thru Hole Header, with Kinked Tails and Optional Polarising Pegs	SDA-90715
	90814	Vertical SMT Header	SDA-90814
	90800	Right-Angle Thru Hole Header	SDA-90800E
	91714	Right-Angle Thru Hole Header, High Temperature Thermoplastic	SD-91714-001
	91330	Bottom Entry SMT Header	SD-91330-001
	91819	Vertical Thru Hole Header, RoHS Compatible	SD-91819-001
	91820	Vertical SMT Header, RoHS Compatible	SD-91820-001
	91822	Bottom Entry SMT Header, RoHS Compatible	SD-91822-001
<b>IDT Connector</b>	90327	Insulation Displacement Connector	SDA-90327
<b>Crimp Housing</b>	91935	Discrete Wire Crimp Housing	SD-91935-001
<b>Crimp Terminal</b>	91821	Discrete Wire Crimp Terminal	SD-91821-001
<b>PCB Connectors</b>	90584	Insulation Displacement Board-In Connector	SDA-90584
	91577	Insulation Displacement Board-In Connector with Alternative Terminal Stagger	SD-91577-001

REVISE ON PC ONLY:		TITLE:	<p align="center"><b>PICOFLEX CONNECTOR SYSTEM PRODUCT SPECIFICATION</b></p>	
<b>P</b>	SEE SHEET 1			
THIS DOCUMENT CONTAINS INFORMATION THAT IS PROPRIETARY TO MOLEX INC. AND SHOULD NOT BE USED WITHOUT WRITTEN PERMISSION				
REV.	DESCRIPTION			
DOCUMENT NUMBER <b>PS-99020-0011</b>		FILENAME PS990200011	SHEET 3 of 13	



3.0 RATINGS

Series No.	Wire/Cable Size (AWG)	Maximum Current at 105°C	Voltage AC/DC	Operating Temperature	Storage Temperature
90325	N/a	1.2A	250V Max.	-40°C to +105°C	-40°C to +85°C
90779	N/a	1.2A			
90715	N/a	1.2A			
90814	N/a	1.2A			
90800	N/a	1.2A			
91714	N/a	1.2A			
91330	N/a	1.2A			
91819	N/a	2.4A			
91820	N/a	2.4A			
91822	N/a	2.4A			
90327	28 AWG	1.2A			
91935 & 91821	24 AWG	2.4A			
	26AWG	2.2A			
	28AWG	1.2A			
90584	28 AWG	1.2A			
91577	28 AWG	1.2A			

REVISE ON PC ONLY:		TITLE:	<b>PICOFLEX CONNECTOR SYSTEM PRODUCT SPECIFICATION</b>	
<b>P</b>	SEE SHEET 1			
THIS DOCUMENT CONTAINS INFORMATION THAT IS PROPRIETARY TO MOLEX INC. AND SHOULD NOT BE USED WITHOUT WRITTEN PERMISSION				
REV.	DESCRIPTION			
DOCUMENT NUMBER <b>PS-99020-0011</b>		FILENAME PS990200011	SHEET 4 of 13	



4.0 ELECTRICAL PERFORMANCE

	ITEM	TEST CONDITION	REQUIREMENT
4.1	Contact Resistance	20mV maximum open circuit voltage. 100mA maximum test current	15mOhms MAXIMUM
4.2	Insulation Resistance	500V DC applied to adjacent circuits	1000 megaohms MINIMUM
4.3	Dielectric Withstanding Voltage	750 VAC applied to adjacent circuits for 1 minute	No breakdown

REVISE ON PC ONLY:		TITLE:	<b>PICOFLEX CONNECTOR SYSTEM PRODUCT SPECIFICATION</b>	
<b>P</b>	SEE SHEET 1			
THIS DOCUMENT CONTAINS INFORMATION THAT IS PROPRIETARY TO MOLEX INC. AND SHOULD NOT BE USED WITHOUT WRITTEN PERMISSION				
REV.	DESCRIPTION		FILENAME	SHEET
	DOCUMENT NUMBER <b>PS-99020-0011</b>		PS990200011	5 of 13



**5.0 MECHANICAL PERFORMANCE**

	ITEM	TEST CONDITION	REQUIREMENT
5.1	Insertion Force (Per individual contact, 90327 & 91821 series only)	Insertion force tested by inserting standard gauge blade specified in Appendix A  Rate of insertion = 25 ±6 mm/sec	1.7N maximum for initial insertion of Tin contact  1.1N maximum for initial insertion of Gold contact
5.2	Withdrawal Force (Per individual contact, 90327 & 91821 series only)	Withdrawal force tested by withdrawing standard gauge blade specified in Appendix A  Rate of withdrawal =25 ±6 mm/seconds	Withdrawal force = 0.25N minimum
5.3	Durability	1 durability cycle = 1 Mating & Un-mating of the connector using Picoflex extraction tool or pull-tab  For Tin on Tin system number of durability cycles = 30  For Gold on Gold system number of durability cycles = 100	Change in insertion force from initial value = 0.5N maximum  Change in contact resistance from initial value = 10mOhms maximum
5.4	Shock	Acceleration = 50g  Duration = 11 milliseconds  Per IEC 512-4, test condition 6c	Change in contact resistance from initial value = 10mOhms maximum  Discontinuity = 1micro second maximum
5.5	Vibration	Sweep = 10-55-10Hz  Amplitude = 0.35mm or 5g  Pulse = 1/2 Sine  Duration = 2 hours in each X-Y-Z direction  Per IEC 512-4, test condition 6d	Change in contact resistance from initial value = 10mOhms maximum  Discontinuity = 1micro second maximum
5.6	Terminal Retention Force in Housing (PCB Headers)	Terminal withdrawal force to be applied at the rate of 25 ± 6mm per minute	Terminal Retention force = 7N minimum.
5.7	Terminal Retention Force in Housing (Crimp Terminal & Housing)	Terminal withdrawal force to be applied at the rate of 25 ± 6mm per minute	Terminal Retention force = 15N minimum

REVISE ON PC ONLY:		TITLE:	<b>PICOFLEX CONNECTOR SYSTEM PRODUCT SPECIFICATION</b>	
<b>P</b>	SEE SHEET 1			
THIS DOCUMENT CONTAINS INFORMATION THAT IS PROPRIETARY TO MOLEX INC. AND SHOULD NOT BE USED WITHOUT WRITTEN PERMISSION				
REV.	DESCRIPTION			
DOCUMENT NUMBER <b>PS-99020-0011</b>		FILENAME PS990200011	SHEET 6 of 13	



**6.0 ENVIRONMENTAL PERFORMANCE**

	ITEM	TEST CONDITION	REQUIREMENT								
6.1	Damp Heat	Mate connectors and expose to: Temperature = +40°C +3/-0°C Humidity = 90 - 95% R.H. Duration = 1000 Hours	Change in contact resistance from initial value = 10mOhms maximum No visual damage								
6.2	Dry Heat	Mate connectors and expose to: Temperature = +105°C +3/-0°C Duration = 240 Hours	Change in contact resistance from initial value = 10mOhms maximum No visual damage								
6.3	Cold	Mate connectors and expose to: Temperature = -40° C +0°C /-3°C Duration = 96 Hours	Change in contact resistance from initial value = 10mOhms maximum No visual damage								
6.4	Thermal Shock	Mate connectors and expose to 10 cycles of the following profile:  <table border="1" style="margin-left: 20px;"> <thead> <tr> <th>Temperature °C</th> <th>Time Duration</th> </tr> </thead> <tbody> <tr> <td>-40 +0 /-3</td> <td>30 minutes</td> </tr> <tr> <td>+20 ± 5</td> <td>5 minutes max</td> </tr> <tr> <td>+105 +3/-0</td> <td>30 minutes</td> </tr> </tbody> </table>	Temperature °C	Time Duration	-40 +0 /-3	30 minutes	+20 ± 5	5 minutes max	+105 +3/-0	30 minutes	Change in contact resistance from initial value = 10mOhms maximum No visual damage
Temperature °C	Time Duration										
-40 +0 /-3	30 minutes										
+20 ± 5	5 minutes max										
+105 +3/-0	30 minutes										
6.5	Corrosive Atmosphere Sulphur Dioxide (SO <sub>2</sub> )	Mate Connectors and expose to: Atmosphere: 10 parts per million (PPM) SO <sub>2</sub> Duration: 240 hours Temperature: 25 °C Humidity: 75% R.H.	Change in contact resistance from initial value = 10mOhms maximum No visual damage								
6.6	Corrosive Atmosphere Hydrogen Sulphide (H <sub>2</sub> S)	Mate Connectors and expose to: Atmosphere: 1 part per million (PPM) H <sub>2</sub> S Duration: 96 hours Temperature: 25 °C Humidity: 75% R.H.	Change in contact resistance from initial value = 10mOhms maximum No visual damage								
6.7	Solder Heat Resistance 90325, 90584, 90715, 90800 and 91577 series only	Insert Terminal Solder Tails in solder bath: Solder Temperature: 230°C Duration: 5 seconds maximum	No damage that would impair normal operation								

REVISE ON PC ONLY:		TITLE:	<b>PICOFLEX CONNECTOR SYSTEM PRODUCT SPECIFICATION</b>	
P	SEE SHEET 1			
THIS DOCUMENT CONTAINS INFORMATION THAT IS PROPRIETARY TO MOLEX INC. AND SHOULD NOT BE USED WITHOUT WRITTEN PERMISSION				
REV.	DESCRIPTION			
DOCUMENT NUMBER <b>PS-99020-0011</b>		FILENAME PS990200011	SHEET 7 of 13	





PRODUCT SPECIFICATION



LANGUAGE

English

	ITEM	TEST CONDITION	REQUIREMENT
6.8	Resistance to Reflow Temperature 90779, 90814, 91330, 91714, 91819, 91820 and 91822 series only	Subject unmated connectors to applicable re-flow profile shown in Appendix C	No damage that would impair normal operation
6.9	Glow Wire 91819, 91820, 91821, 91822 and 91935 series only	Glow wire temperature: 750°C Test positions shown in Appendix D Per IEC 60695-2-11	Flame must extinguish within 2 seconds of removal of glow wire No ignition of wrapping tissue 200mm under test specimen

REVISE ON PC ONLY:

P

SEE SHEET 1

TITLE:

**PICOFLEX CONNECTOR SYSTEM  
PRODUCT SPECIFICATION**

THIS DOCUMENT CONTAINS INFORMATION THAT IS PROPRIETARY TO MOLEX INC. AND SHOULD NOT BE USED WITHOUT WRITTEN PERMISSION

REV.

DESCRIPTION

DOCUMENT NUMBER  
**PS-99020-0011**

FILENAME  
PS990200011

SHEET  
8 of 13



**7.0 PACKAGING**

Parts shall be packaged to protect against damage during handling, transit and storage. No Styrofoam shall be used in any packing that comes in direct contact with the connectors.

REVISE ON PC ONLY:		TITLE:	<b>PICOFLEX CONNECTOR SYSTEM PRODUCT SPECIFICATION</b>	
<b>P</b>	SEE SHEET 1			
REV.	DESCRIPTION	THIS DOCUMENT CONTAINS INFORMATION THAT IS PROPRIETARY TO MOLEX INC. AND SHOULD NOT BE USED WITHOUT WRITTEN PERMISSION		
DOCUMENT NUMBER <b>PS-99020-0011</b>			FILENAME PS990200011	SHEET 9 of 13



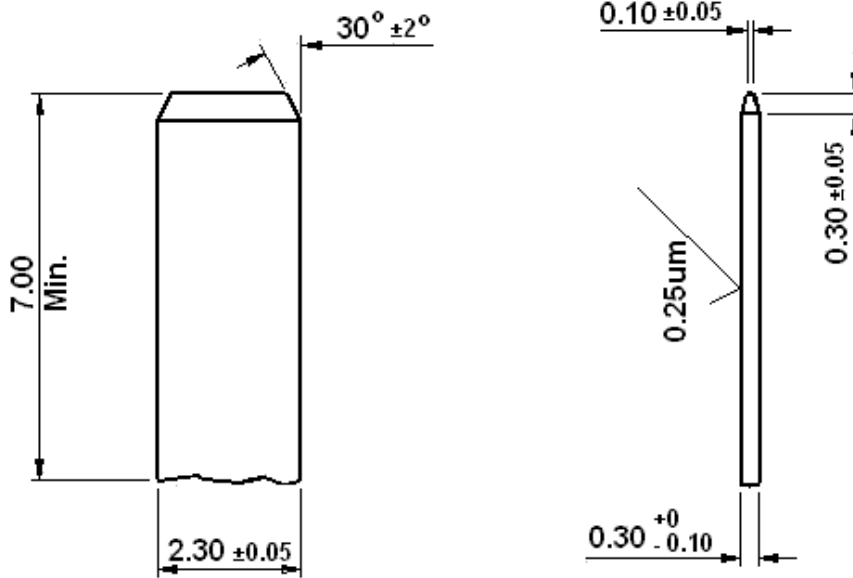
8.0 TEST GROUPS

TEST REF.	TEST	A	B	C	D	E	F	G
4.1	Contact Resistance	2 4 6 8	2 4 6	2 4 6 9	2 4 6	2 4 6		
4.2	Insulation Resistance	9						
4.3	Dielectric Withstanding Voltage	10						
5.1	Insertion Force						1	
5.2	Withdrawal Force						2	
5.3	Durability	3	3	3	3	3		
5.4	Shock			8				
5.5	Vibration			7				
5.6	Terminal Retention Force in Housing (PCB Headers)							1
5.7	Terminal Retention Force in Housing (Crimp Terminal & Housing)							1
6.1	Damp Heat	7						
6.2	Dry Heat	5						
6.3	Cold			5				
6.4	Thermal Shock		5					
6.5	Corrosive Atmosphere Sulphur Dioxide (SO <sub>2</sub> )				5			
6.6	Corrosive Atmosphere Hydrogen Sulphide (H <sub>2</sub> S)					5		
6.7	Solder Heat Resistance	1	1	1	1	1		
6.8	Resistance to Reflow Temperature	1	1	1	1	1		
6.9	Glow Wire							1

REVISE ON PC ONLY:		TITLE:	<b>PICOFLEX CONNECTOR SYSTEM PRODUCT SPECIFICATION</b>	
<b>P</b>	SEE SHEET 1			
THIS DOCUMENT CONTAINS INFORMATION THAT IS PROPRIETARY TO MOLEX INC. AND SHOULD NOT BE USED WITHOUT WRITTEN PERMISSION				
REV.	DESCRIPTION			FILENAME PS990200011
DOCUMENT NUMBER <b>PS-99020-0011</b>				SHEET 10 of 13



APPENDIX A - INSERTION/WITHDRAWAL GAUGE SPECIFICATION



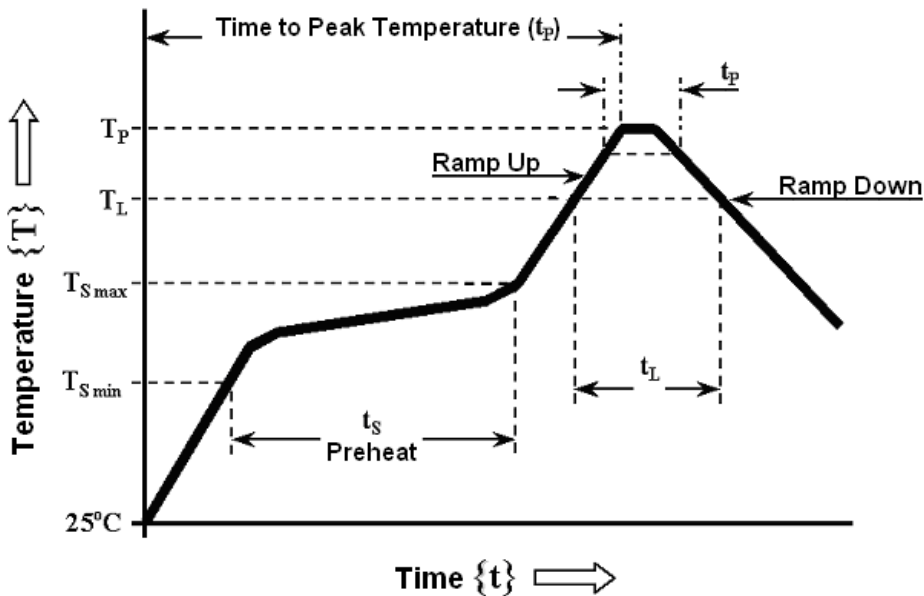
Note: Gauge weight = 25 grams minimum

REVISE ON PC ONLY:		TITLE:	<b>PICOFLEX CONNECTOR SYSTEM PRODUCT SPECIFICATION</b>	
<b>P</b>	SEE SHEET 1			
REV.	DESCRIPTION	THIS DOCUMENT CONTAINS INFORMATION THAT IS PROPRIETARY TO MOLEX INC. AND SHOULD NOT BE USED WITHOUT WRITTEN PERMISSION		
DOCUMENT NUMBER <b>PS-99020-0011</b>		FILENAME PS990200011	SHEET 11 of 13	



APPENDIX B – RE-FLOW PROFILES

PROFILE FEATURE	Pb-FREE PROCESS (RoHS) COMPLIANT	Pb-FREE PROCESS (RoHS) COMPATIBLE
Product Series	90814, 90779, 91330, 91714.	91819, 91820, 91822.
Average Ramp Up Rate	3°C/second max.	3°C/second max.
Preheat - Temperature Min ( $T_{S\ min}$ ) - Temperature Max ( $T_{S\ max}$ ) - Time ( $t_s$ )	100°C 150°C 60 – 120 seconds	150°C 200°C 60 – 180 seconds
Time over Liquidus - Temperature ( $T_L$ ) - Time ( $t_L$ )	183°C 60 – 150 seconds	217°C 60 – 150 seconds
Time from 25°C to Peak Temperature ( $T_P$ )	6 minutes max.	8 minutes max.
Peak Temperature ( $T_P$ )	230°C max.	260°C max.
Time within 5°C of Peak Temperature ( $t_p$ )	30 seconds max.	40 seconds max.
Ramp Down Rate	6°C/second max.	6°C/second max.

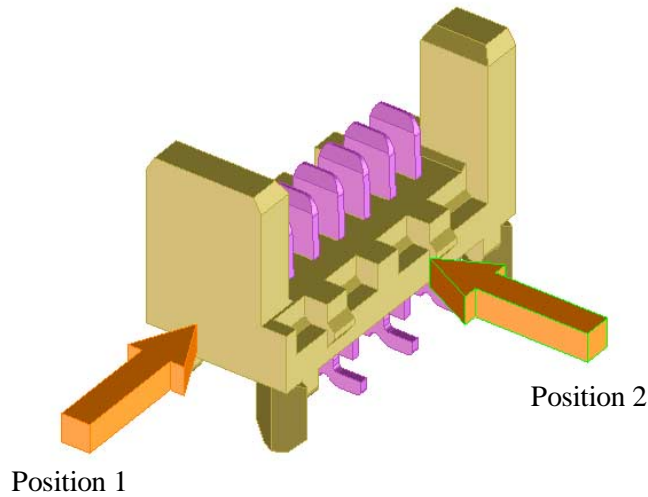


REVISE ON PC ONLY:		TITLE:	<b>PICOFLEX CONNECTOR SYSTEM PRODUCT SPECIFICATION</b>	
<b>P</b>	SEE SHEET 1			
REV.	DESCRIPTION	THIS DOCUMENT CONTAINS INFORMATION THAT IS PROPRIETARY TO MOLEX INC. AND SHOULD NOT BE USED WITHOUT WRITTEN PERMISSION		
DOCUMENT NUMBER <b>PS-99020-0011</b>		FILENAME PS990200011	SHEET 12 of 13	

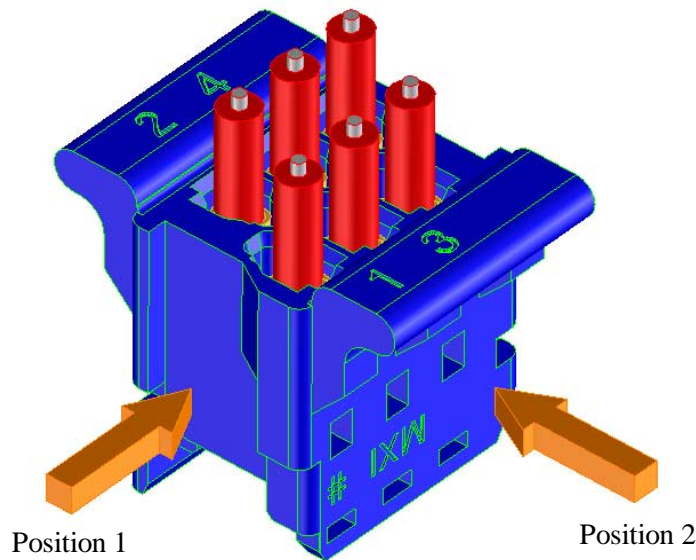


### APPENDIX C - GLOW WIRE TEST POSITIONS

Series 91819, 91820 and 91822

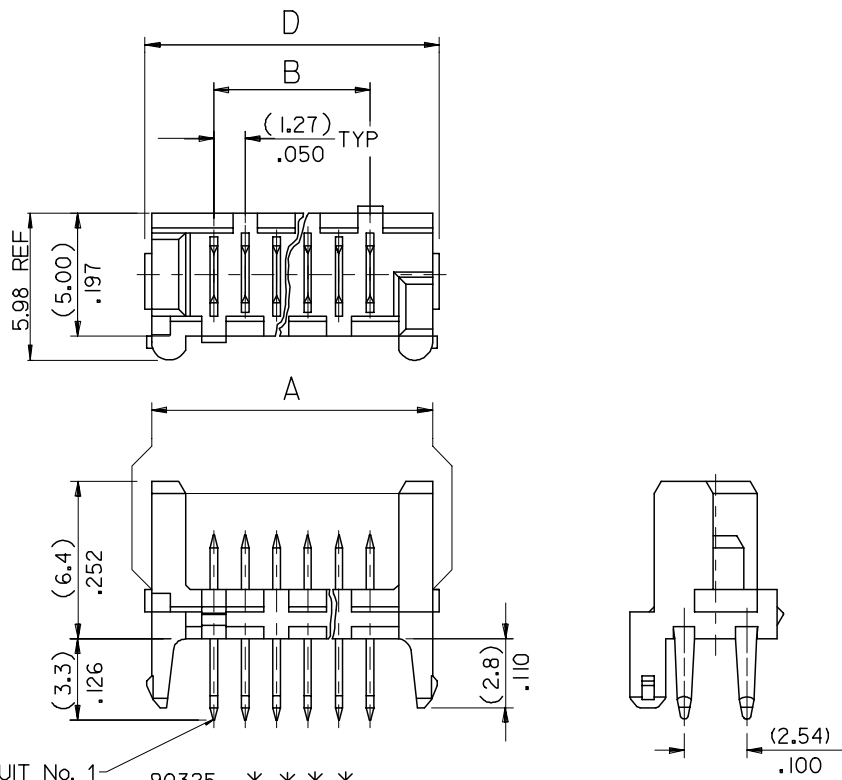


Series 91821 and 91935



REVISE ON PC ONLY:		TITLE:	<b>PICOFLEX CONNECTOR SYSTEM PRODUCT SPECIFICATION</b>	
<b>P</b>	SEE SHEET 1			
REV.	DESCRIPTION	THIS DOCUMENT CONTAINS INFORMATION THAT IS PROPRIETARY TO MOLEX INC. AND SHOULD NOT BE USED WITHOUT WRITTEN PERMISSION		
DOCUMENT NUMBER <b>PS-99020-0011</b>		FILENAME PS990200011	SHEET 13 of 13	

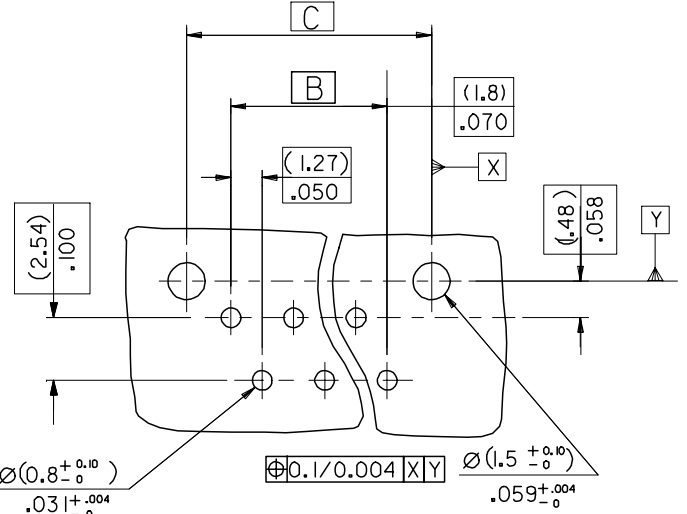
10 9 8 7 6 5 4 3 2 1



90325 - **26	26	(36.80)/1.449	(31.75)/1.250	(35.35)/1.392	(37.26)/1.467	14
↑ - **24	24	(34.26)/1.349	(29.21)/1.150	(32.81)/1.292	(34.72)/1.367	15
- **22	22	(31.72)/1.249	(26.67)/1.050	(30.27)/1.192	(32.18)/1.267	16
- **20	20	(29.18)/1.149	(24.13)/.950	(27.73)/1.092	(29.64)/1.167	18
- **18	18	(26.64)/1.049	(21.59)/.850	(25.19)/.992	(27.10)/1.067	19
- **16	16	(24.10)/.949	(19.05)/.750	(22.65)/.892	(24.56)/.967	22
- **14	14	(21.56)/.849	(16.51)/.650	(20.11)/.792	(22.02)/.867	24
- **12	12	(19.02)/.749	(13.97)/.550	(17.57)/.692	(19.48)/.767	27
- **10	10	(16.48)/.649	(11.43)/.450	(15.03)/.592	(16.94)/.667	32
- **08	8	(13.94)/.549	(8.89)/.350	(12.49)/.492	(14.40)/.567	36
↓ - **06	6	(11.40)/.449	(6.35)/.250	(9.95)/.392	(11.86)/.467	44
90325 - **04	4	(8.86)/.349	(3.81)/.150	(7.41)/.292	(9.32)/.367	57
PART NO.	NO. OF CKTS	DIM. A	DIM. B	DIM. C	DIM. D	NO. ASSYS IN TUBE

CIRCUIT No. 1 90325- \* \* \* \*  
 CIRCUIT SIZE 04 CKT TO 26 CKT  
 0 = HOUSING : COLOUR BLACK  
 9 = HOUSING : CUSTOMER SPECIFIC (COLOUR BLACK)  
 0= 3-5um TIN ASSY  
 3= 0.76um GOLD ASSY  
 5= NON STANDARD VOIDED OPTION SEE SHEET 2  
 6= ROUND PEG WITH KINKS OPTION SEE SHEET 3  
 7= 0.76um GOLD, TUBED  
 9= 3-5um TIN ASSY TUBED

PCB LAYOUT VIEWED FROM SOLDER SIDE. BOARD (1.60±0.14) THK .063+0.006 THK.



NOTES:  
 1. HOUSING MATL. POLYESTER PBT15% GLASS FILLED TO UL94 V-0.  
 2. TER. MATL. BRASS (0.28)/.011 THK  
 PLATING. TIN: (1.27um)/50u" MIN NICKEL UNDER (3-5um)/120-200u" TIN  
 PLATING. GOLD: (1.27um)/50u" MIN. NICKEL UNDER (3-5um)/120-200u" TIN SELECTIVE AND (0.76um)/30u" SELECTIVE GOLD  
 3. CONFORMS TO PRODUCT SPECIFICATION PS-99020-0011

ADD CKT.1 INDICATOR	DESCRIPTION
EC NO: E2007-0083	
DRWN:DMASZKI/EMI/CZ 2006/09/11	
CHKD:J.DENNEHY 2006/09/11	
APPR:J.DENNEHY 2006/09/13	
AN	REV

QUALITY SYMBOLS  
 ▽=0  
 ▽=0

GENERAL TOLERANCES (UNLESS SPECIFIED)	
mm	INCH
4 PLACES ± ---	± ---
3 PLACES ± ---	± .008
2 PLACES ± 0.20	± .008
1 PLACE ± 0.20	± ---
ANGULAR ±1/2°	
DRAFT WHERE APPLICABLE MUST REMAIN WITHIN DIMENSIONS	

DIMENSION STYLE	
MM/IN	
DRAWN BY	DATE
DMCN	2001/05/29
CHECKED BY	DATE
ROCONNOR	2001/05/29
APPROVED BY	DATE
MWILHITE	2001/05/29
MATERIAL NO.	
SEE CHART	

SCALE	DESIGN UNITS	THIRD ANGLE PROJECTION
5:1	METRIC	
HEADER ASSEMBLY		
MOLEX INCORPORATED		
DOCUMENT NO.	SHEET NO.	
SDA-90325	1 OF 3	
THIS DRAWING CONTAINS INFORMATION THAT IS PROPRIETARY TO MOLEX INCORPORATED AND SHOULD NOT BE USED WITHOUT WRITTEN PERMISSION		

9 8 7 6 5 4 3 2 1