

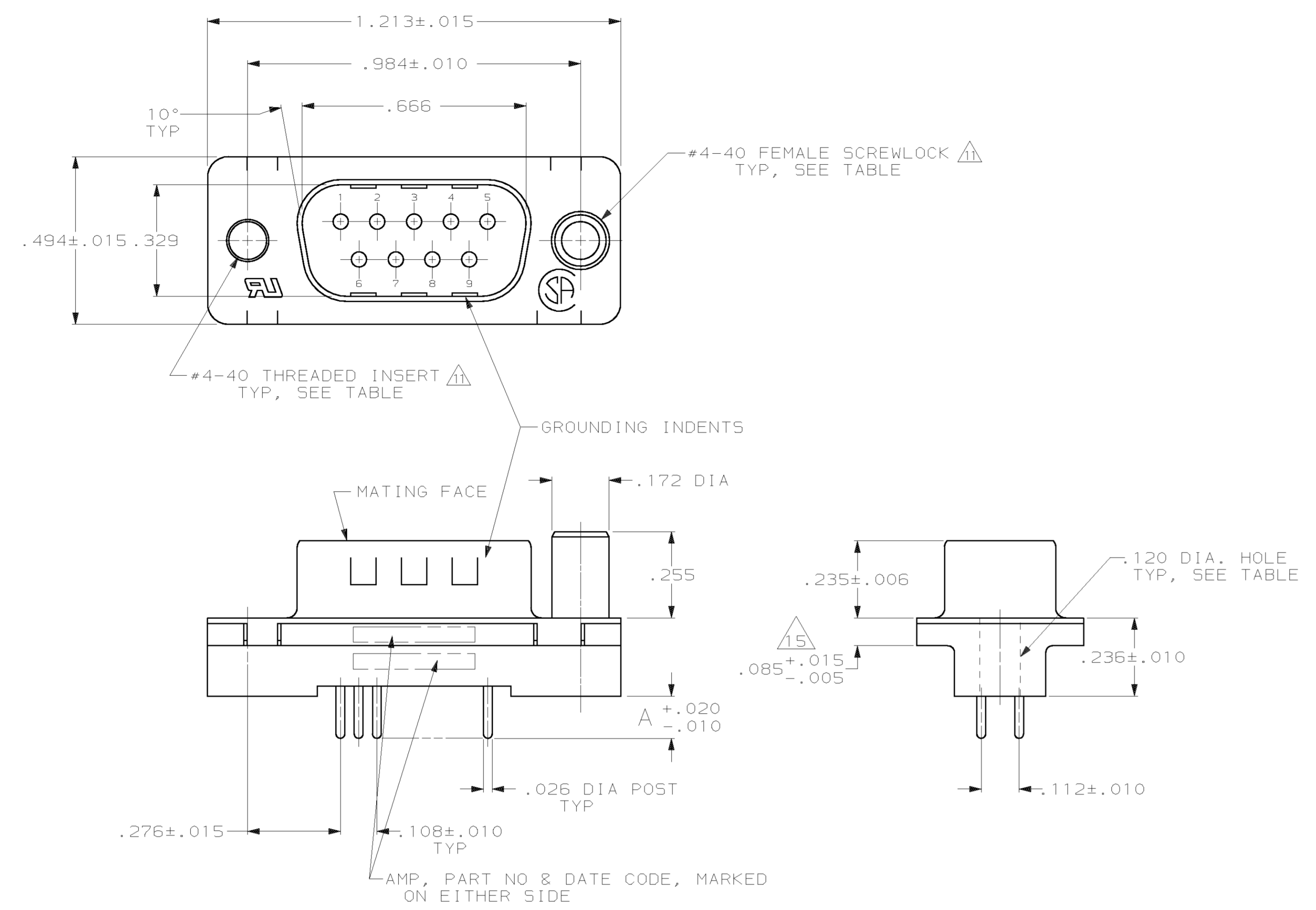
Distributed by:

JAMECO[®]
ELECTRONICS

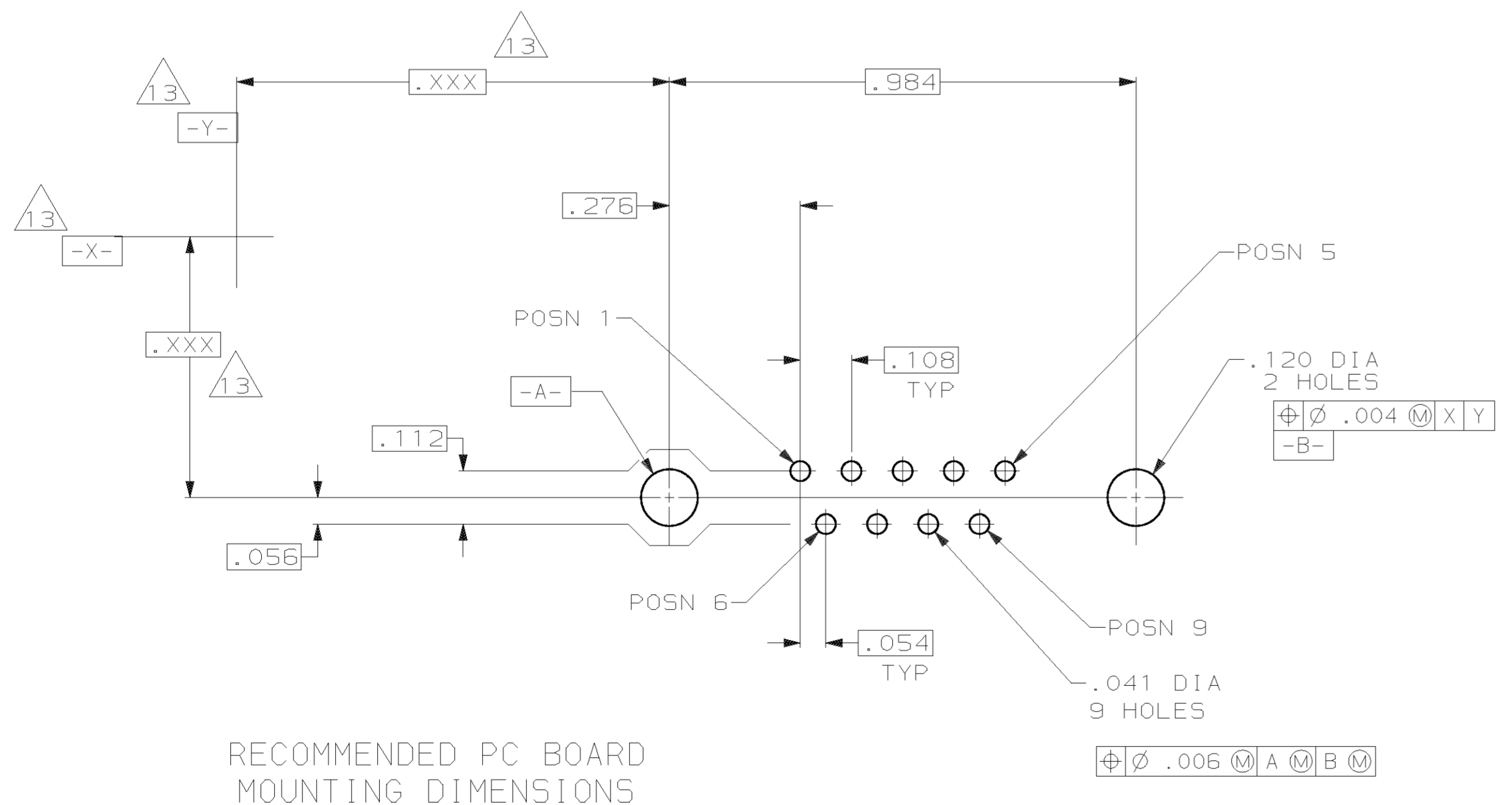
www.Jameco.com ♦ 1-800-831-4242

The content and copyrights of the attached
material are the property of its owner.

Jameco Part Number 837687



1. CONNECTOR MATES WITH ANY 9 POS. RECEPTACLE IN AMPLIMITE SERIES & COMPLIES WITH AMP SPEC. 108-40025 WHERE APPLICABLE.
2. FLAME RETARDANT 94V-0 RATED THERMOPLASTIC; COLOR: BLACK.
3. STEEL PER ASTM A109.
4. BRASS PER MIL-C-50.
5. INSERTS: BRASS PER QQ-B-626, SCREWLOCKS: ZINC.
6. GOLD PLATING PER MIL-G-45204, TIN PLATING PER MIL-T-10727, NICKEL PLATING PER QQ-N-290.
7. .000200-.000400 BRIGHT TIN.
8. INSERTS: UNPLATED, SCREWLOCKS: UNPLATED.
9. GOLD PLATED FOR A LENGTH OF .150 MIN FROM MATING END, GOLD FLASH IN MATED AREA, .000100 MIN TIN OR TIN-LEAD FOR A LENGTH OF DIMENSION A FROM OPPOSITE END, ALL OVER .000050 MIN NICKEL.
10. GOLD PLATED FOR A LENGTH OF .150 MIN FROM MATING END, .000030 MIN GOLD IN MATED AREA, .000100 MIN TIN OR TIN-LEAD FOR A LENGTH OF DIMENSION A FROM OPPOSITE END, ALL OVER .000050 MIN NICKEL.
11. INSERTS & SCREWLOCKS WILL WITHSTAND 10 IN. LBS. TORQUE AND 50 LBS. PULL OUT FORCE FROM MATING FACE SIDE.
12. HOUSING APPLICATION TEMPERATURE: 215°C MAXIMUM FOR 120 SECONDS MAXIMUM.
13. DATUMS AND BASIC DIMENSIONS ESTABLISHED BY CUSTOMER.
14. SEE APPLICATION SPEC 114-40023.
15. .110 MAX IN SHELL TAB CLINCH AREAS.



12	OBsolete	.120 DIA HOLE	9	.125	1-747871-9
	OBsolete		10	.250	1-747871-8
	OBsolete		9	.250	1-747871-7
	OBsolete	WITH FEMALE SCREWLOCKS	10	.170	1-747871-6
	OBsolete		9	.170	1-747871-5
	OBsolete		10	.125	1-747871-4
	OBsolete		9	.125	1-747871-3
	OBsolete		10	.250	1-747871-2
	OBsolete		9	.250	1-747871-1
	OBsolete	WITH THREADED INSERTS	10	.170	1-747871-0
	OBsolete		9	.170	747871-9
	OBsolete		10	.125	747871-8
	OBsolete		9	.125	747871-7
	OBsolete		10	.250	747871-6
	OBsolete		9	.250	747871-5
	OBsolete	WITH .120 DIA. HOLE	10	.170	747871-4
	OBsolete		9	.170	747871-3
	OBsolete		10	.125	747871-2
	OBsolete		9	.125	747871-1

RECOMMENDED PC BOARD MOUNTING DIMENSIONS

THIS DRAWING IS A CONTROLLED DOCUMENT.

DIMENSIONS INCHES	TOLERANCES UNLESS OTHERWISE SPECIFIED	DWN S. WELDON 11-25-85	CIR C. RICHARD 11-25-85	AMP Incorporated Harrisburg, PA 17105-3608
0 PLC ±.005	1 PLC ±.005	APPR R. BRANDT 12-02-85	NAME	PLUG ASSEMBLY, SIZE 1, 9 POS, VERTICAL, FRONT SHELL, AMPLIMITE™ HDP
2 PLC ±.005	3 PLC ±.005	FINISH	SIZE	A1
4 PLC ±.005	ANGLES 30°	SHELL	CAGE CODE	00779
MATERIAL HOUSING	HARDWARE	SHELL	WEIGHT	747871
SHELL	HARDWARE	CONTACTS	CUSTOMER DRAWING	SCALE 1:1 SHEET 1 OF 1 REV K