

Distributed by:

**JAMECO**<sup>®</sup>  
ELECTRONICS

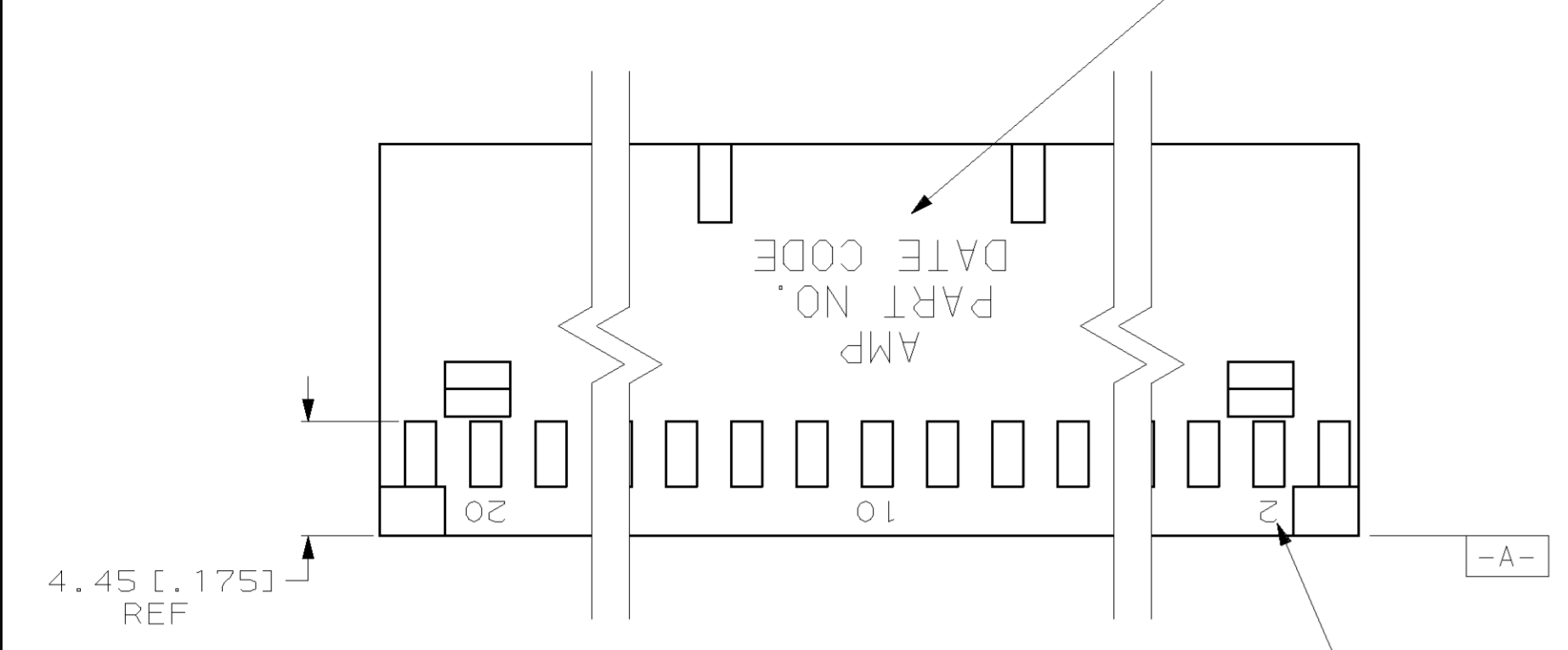
**www.Jameco.com ♦ 1-800-831-4242**

The content and copyrights of the attached  
material are the property of its owner.

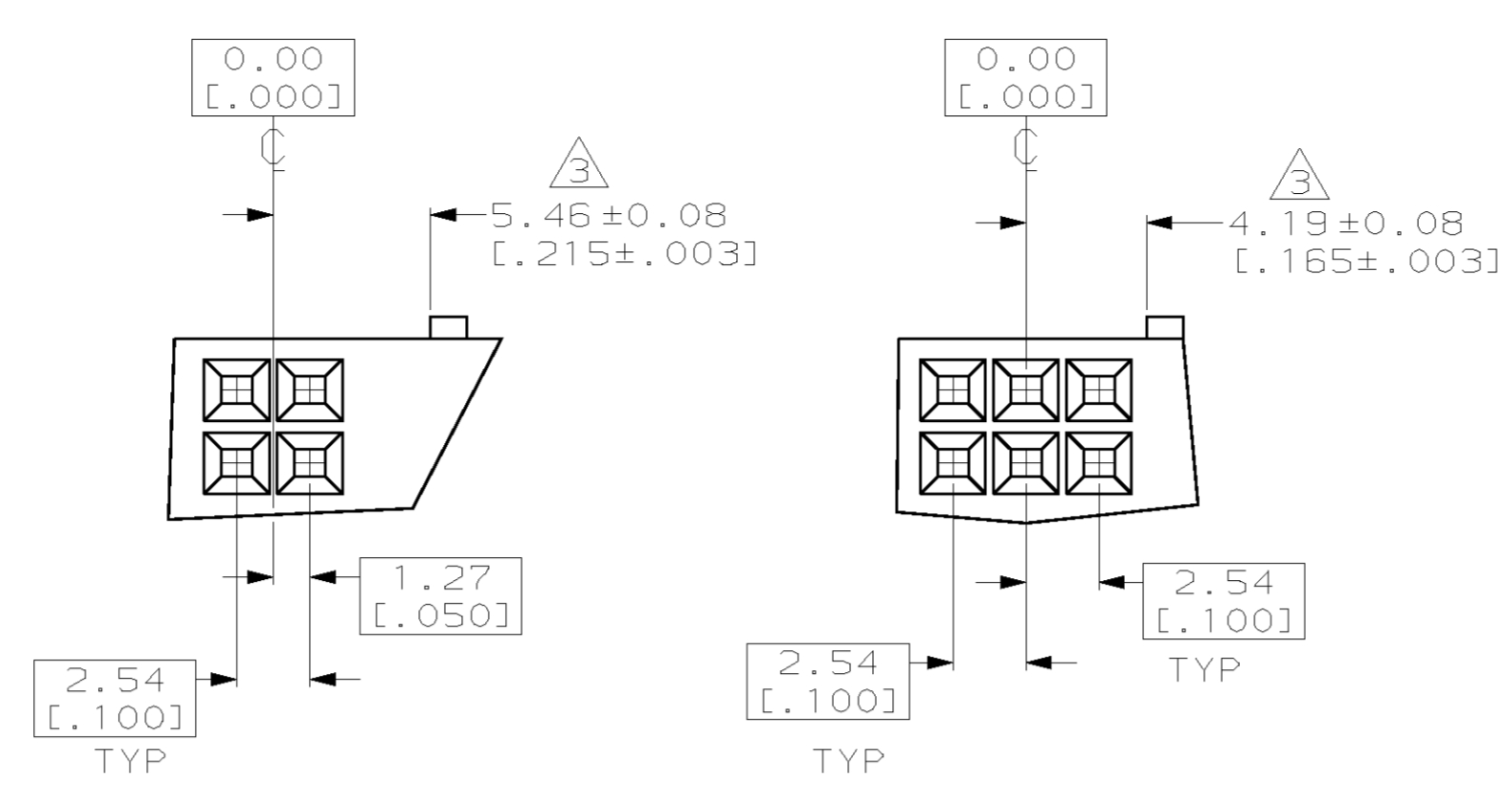
Jameco Part Number 841272

REV. NO.		DATE		DESCRIPTION		DATE	BY	APP'D
AD	39	V	REV PER	OG3C-0203-04	140CT04	JR	DS	

"AMP", PART NO. & DATE CODE MARKED (WHITE) 1.58±0.38 [.062±.015] HIGH CHARS. IN AREA SHOWN WHEN HOUSING SIZE PERMITS

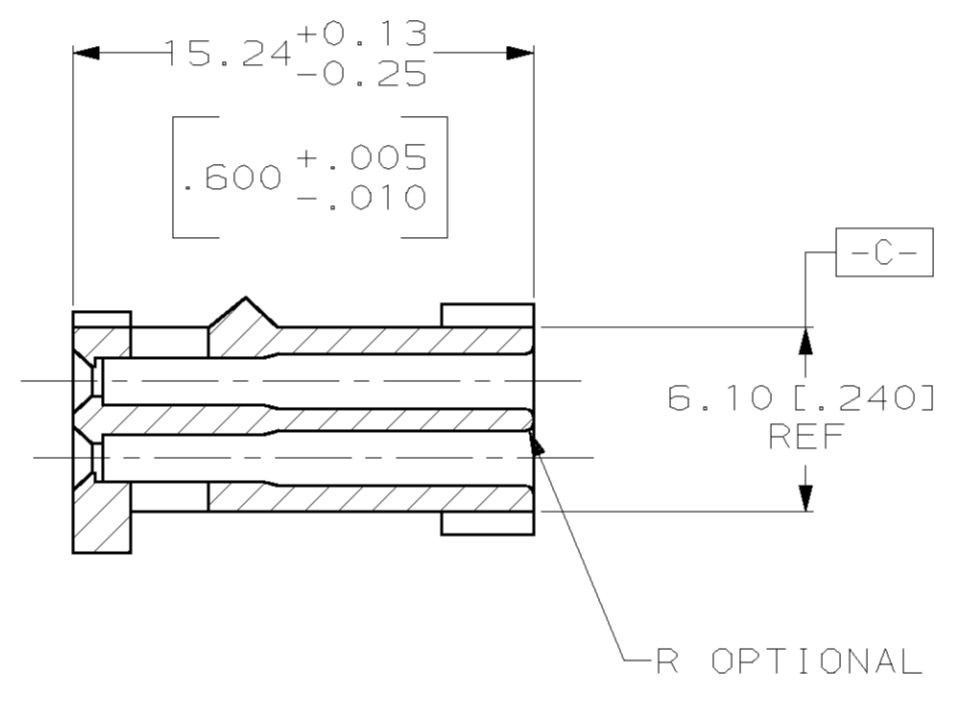
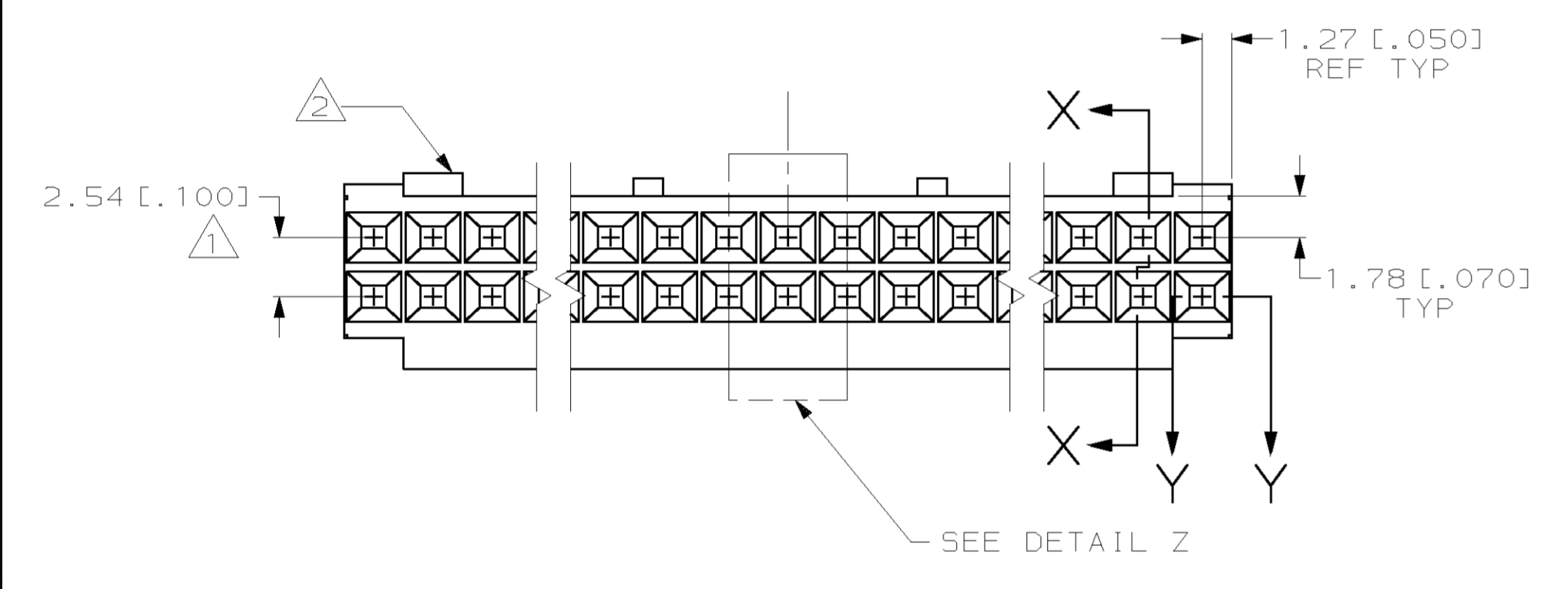


CAVITY IDENT. MARKED (WHITE) 1.17±0.38 [.046±.015] HIGH CHARS. SECOND AND EVERY FIFTH CAVITY, ONE SIDE.

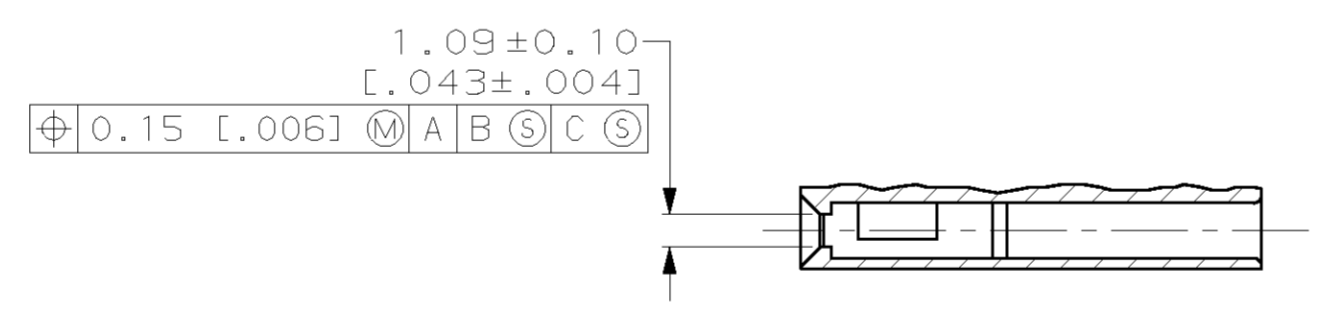
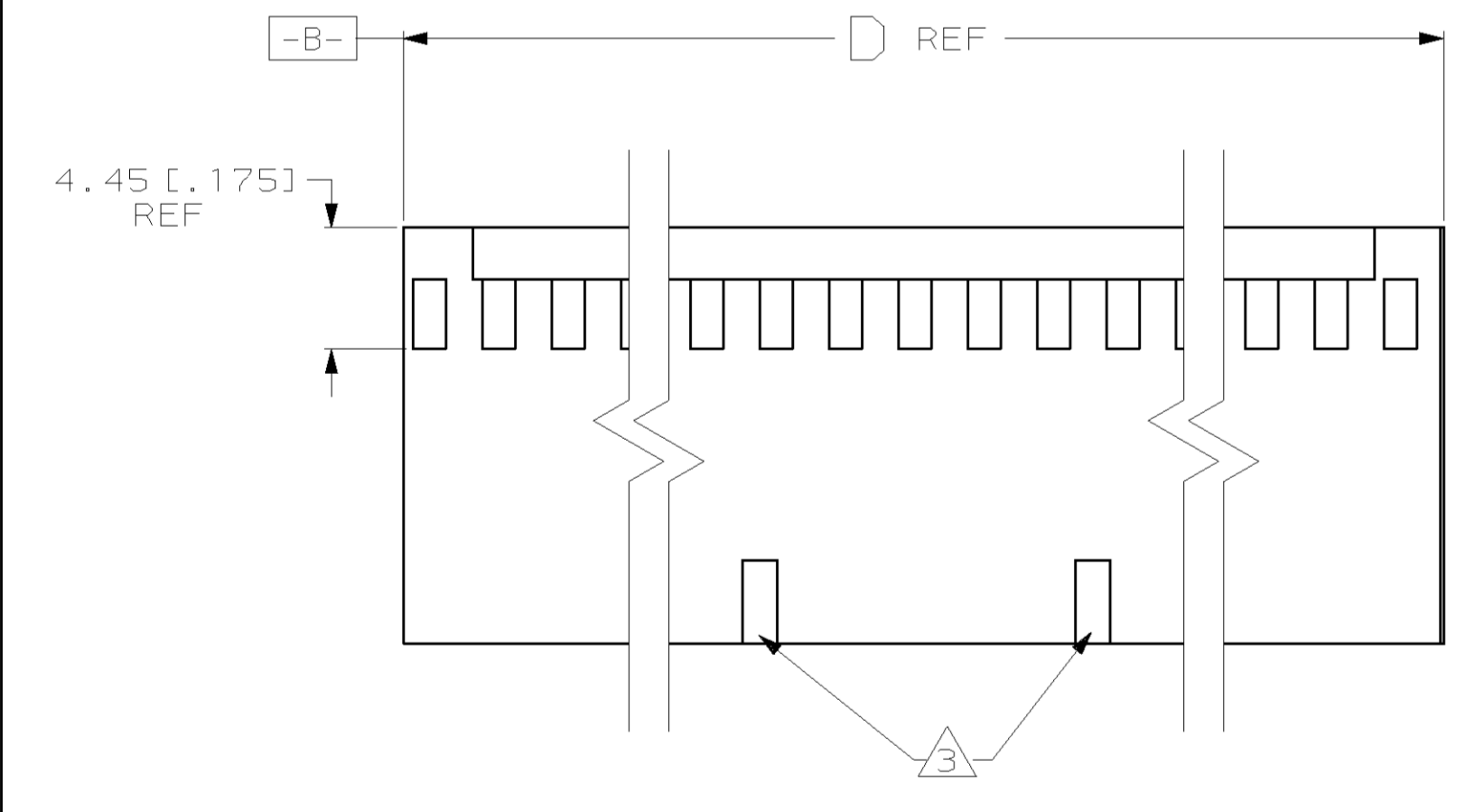


BASIC DIMENSION FOR ODD NUMBER OF SPACES (SEE THE TABLE)  
 BASIC DIMENSION FOR EVEN NUMBER OF SPACES (SEE THE TABLE)

DETAIL Z



SECTION X-X



SECTION Y-Y

ROTATED 90° CLOCKWISE

2 SEE TABLE FOR NUMBER OF DETENTS. DETENT ON THIS SIDE FOR HOUSINGS WITH ONE DETENT.

3 STRAIN RELIEF LOCATORS WILL APPEAR ON 20 POSITION AND LARGER HOUSINGS.

4. USE EXTRACTION TOOL 91052-1 TO REMOVE RECEPTACLE CONTACTS.

5. THESE HOUSINGS ARE COMPATIBLE WITH ANY MOD II SHROUDED HEADER.

6. HOUSINGS WILL ACCOMMODATE #20-24 AWG WIRE, 1.75 [.069] MAX. INSULATION DIA. OR #26-30 AWG WIRE, 1.17 [.046] MAX. INSULATION DIA.

MATERIAL: FLAME RETARDANT GLASS FILLED NYLON, COLOR: BLACK PER ASTM D4066

REV. NO.	DESCRIPTION	DATE	BY	APP'D	PART NO.	
OBSOLETE	ALL	2	81.28 [3.200]	31	64	6-87631-6
	NONE	2	81.28 [3.200]	31	64	6-87631-5
OBSOLETE	ALL	2	73.66 [2.900]	28	58	6-87631-4
	NONE	2	73.66 [2.900]	28	58	6-87631-3
OBSOLETE	-	-	-	-	-	6-87631-2
	-	-	-	-	-	6-87631-1
OBSOLETE	ALL	2	60.96 [2.400]	23	48	6-87631-0
	NONE	2	60.96 [2.400]	23	48	5-87631-9
OBSOLETE	ALL	2	88.90 [3.800]	35	72	5-87631-8
	NONE	2	88.90 [3.800]	35	72	5-87631-7
OBSOLETE	ALL	2	88.90 [3.500]	34	70	5-87631-6
	NONE	2	88.90 [3.500]	34	70	5-87631-5
OBSOLETE	ALL	2	83.82 [3.300]	32	66	5-87631-4
	NONE	2	83.82 [3.300]	32	66	5-87631-3
	ALL	2	76.20 [3.000]	29	60	5-87631-2
	NONE	2	76.20 [3.000]	29	60	5-87631-1
OBSOLETE	-	-	-	-	-	5-87631-0
OBSOLETE	-	-	-	-	-	4-87631-9
OBSOLETE	-	-	-	-	-	4-87631-8
OBSOLETE	-	-	-	-	-	4-87631-7
OBSOLETE	ALL	2	68.58 [2.700]	26	54	4-87631-6
	NONE	2	68.58 [2.700]	26	54	4-87631-5
OBSOLETE	ALL	2	66.04 [2.600]	25	52	4-87631-4
	NONE	2	66.04 [2.600]	25	52	4-87631-3
	ALL	2	63.50 [2.500]	24	50	4-87631-2
	NONE	2	63.50 [2.500]	24	50	4-87631-1
	ALL	2	55.88 [2.200]	21	44	4-87631-0
	NONE	2	55.88 [2.200]	21	44	3-87631-9
OBSOLETE	ALL	2	53.34 [2.100]	20	42	3-87631-8
	NONE	2	53.34 [2.100]	20	42	3-87631-7
	ALL	2	50.80 [2.000]	19	40	3-87631-6
	NONE	2	50.80 [2.000]	19	40	3-87631-5
OBSOLETE	ALL	2	48.26 [1.900]	18	38	3-87631-4
	NONE	2	48.26 [1.900]	18	38	3-87631-3
OBSOLETE	ALL	2	45.72 [1.800]	17	36	3-87631-2
	NONE	2	45.72 [1.800]	17	36	3-87631-1
	ALL	2	43.18 [1.700]	16	34	3-87631-0
	NONE	2	43.18 [1.700]	16	34	2-87631-9
	ALL	2	40.64 [1.600]	15	32	2-87631-8
	NONE	2	40.64 [1.600]	15	32	2-87631-7
	ALL	2	38.10 [1.500]	14	30	2-87631-6
	NONE	2	38.10 [1.500]	14	30	2-87631-5
	ALL	2	35.56 [1.400]	13	28	2-87631-4
	NONE	2	35.56 [1.400]	13	28	2-87631-3
	ALL	2	33.02 [1.300]	12	26	2-87631-2
	NONE	2	33.02 [1.300]	12	26	2-87631-1
	ALL	2	30.48 [1.200]	11	24	2-87631-0
	NONE	2	30.48 [1.200]	11	24	1-87631-9
	ALL	2	27.94 [1.100]	10	22	1-87631-8
	NONE	2	27.94 [1.100]	10	22	1-87631-7
	ALL	2	25.40 [1.000]	9	20	1-87631-6
	NONE	2	25.40 [1.000]	9	20	1-87631-5
	ALL	1	22.86 [.900]	8	18	1-87631-4
	NONE	1	22.86 [.900]	8	18	1-87631-3
	ALL	1	20.32 [.800]	7	16	1-87631-2
	NONE	1	20.32 [.800]	7	16	1-87631-1
	ALL	1	17.78 [.700]	6	14	1-87631-0
	NONE	1	17.78 [.700]	6	14	87631-9
	ALL	1	15.24 [.600]	5	12	87631-8
	NONE	1	15.24 [.600]	5	12	87631-7
	ALL	1	12.70 [.500]	4	10	87631-6
	NONE	1	12.70 [.500]	4	10	87631-5
	ALL	1	10.16 [.400]	3	8	87631-4
	NONE	1	10.16 [.400]	3	8	87631-3
	ALL	1	7.62 [.300]	2	6	87631-2
	NONE	1	7.62 [.300]	2	6	87631-1

MARKING	NO. OF DETENTS	D	NO. OF SPACES	NO. OF POSN	PART NUMBER

DIMENSIONS: mm (INCHES)		TOLERANCES UNLESS OTHERWISE SPECIFIED:		DATE: 11-8-94	BY: E. BRANDBERG	AMP Incorporated Harrisburg, PA 17105-3608
Ø	PLC	±		CHK: SHUFY	11-8-94	AMP CONNECTOR, MOD IV, CRIMP SNAP-IN, WITH DETENT
Ø	PLC	±	±0.13(.005)	APP'D: D. DUPLER	11-8-94	
Ø	PLC	±		PRODUCT SPEC		SIZE: A1
Ø	PLC	±		APPLICATION SPEC		CAGE CODE: 00779
Ø	PLC	±		HEIGHT		DRAWING NO: C-87631
Ø	PLC	±		FINISH		SCALE: 4:1
MATERIAL: NYLON		FINISH: -		CUSTOMER DRAWING		SHEET 11 OF 11