

Distributed by:

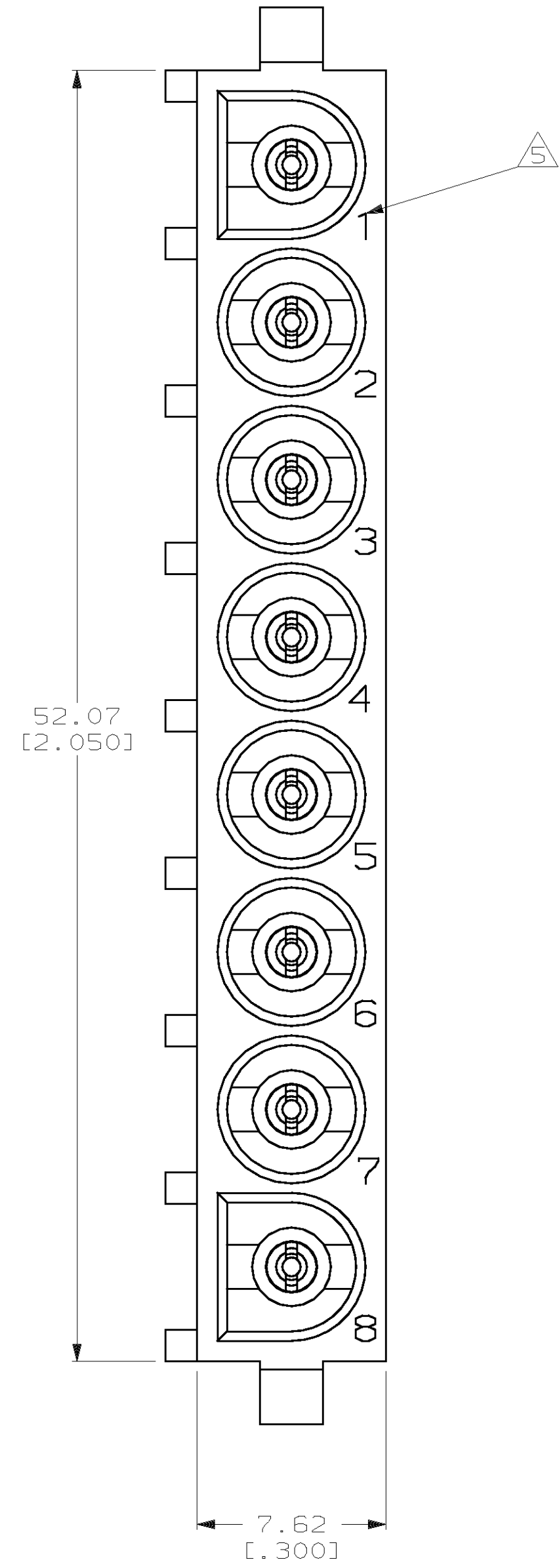
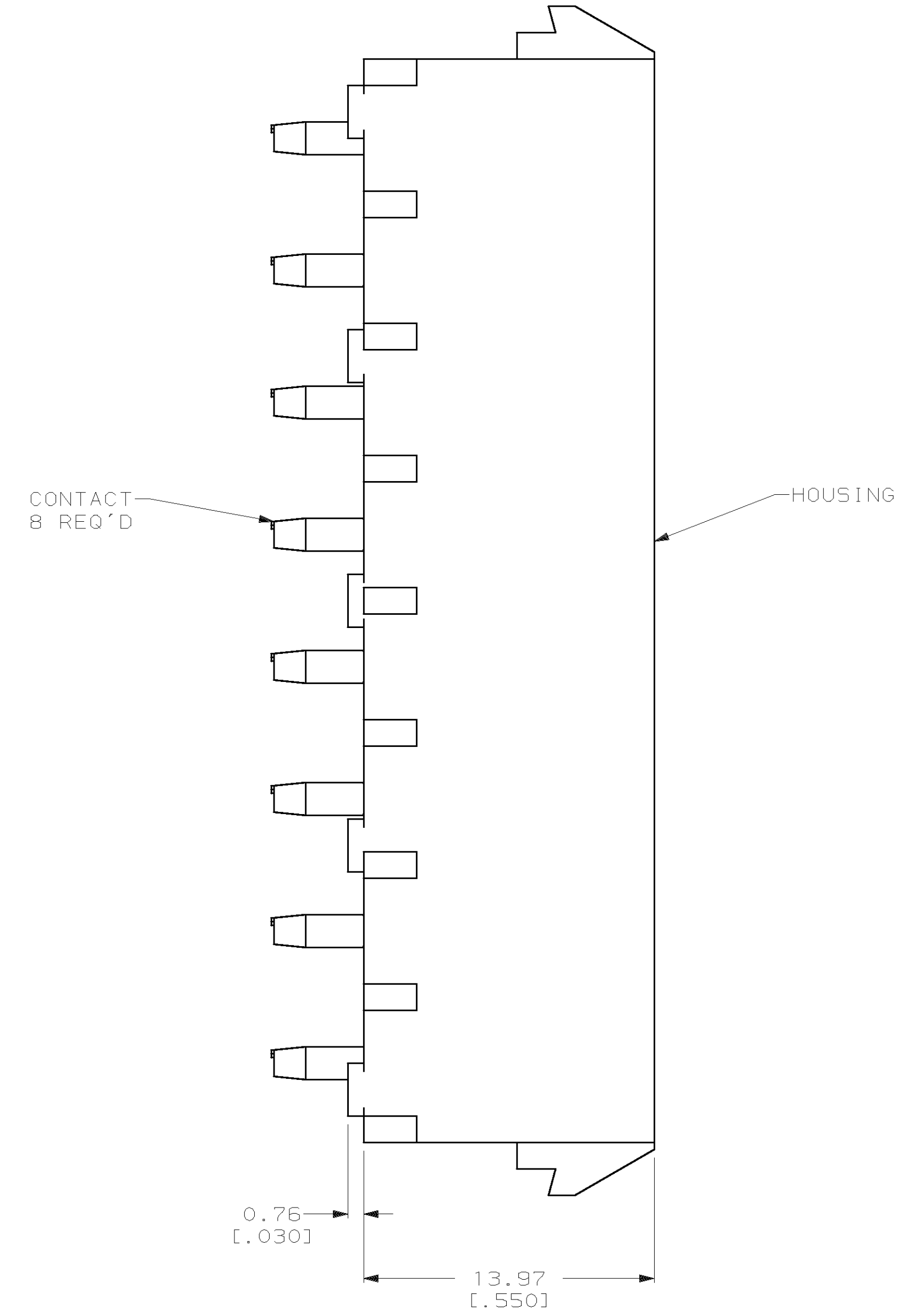
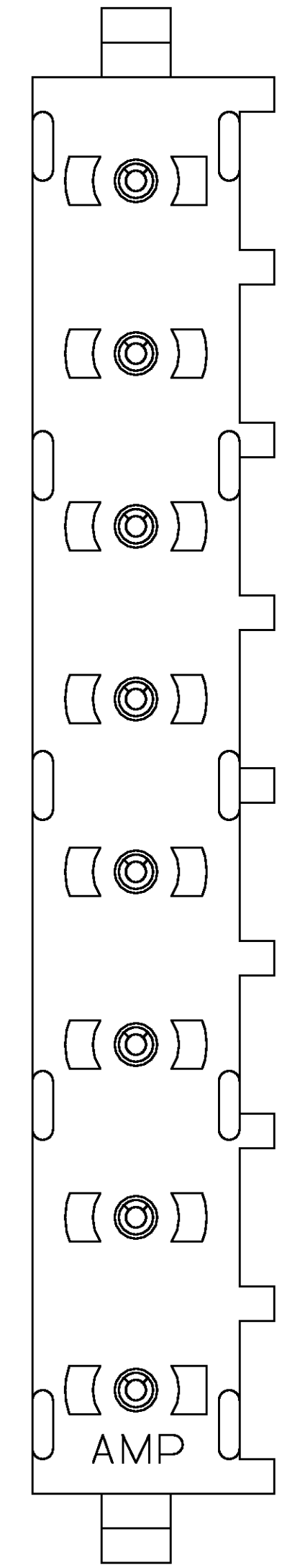
JAMECO[®]
ELECTRONICS

www.Jameco.com ♦ 1-800-831-4242

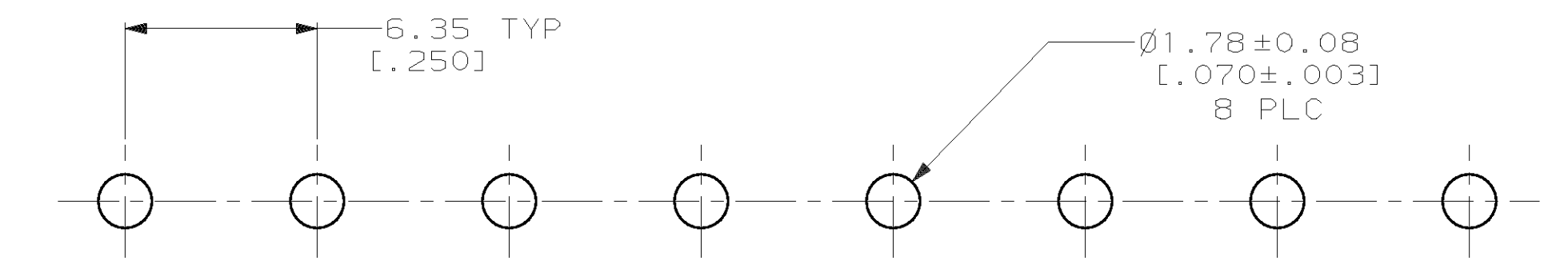
The content and copyrights of the attached
material are the property of its owner.

Jameco Part Number 856950

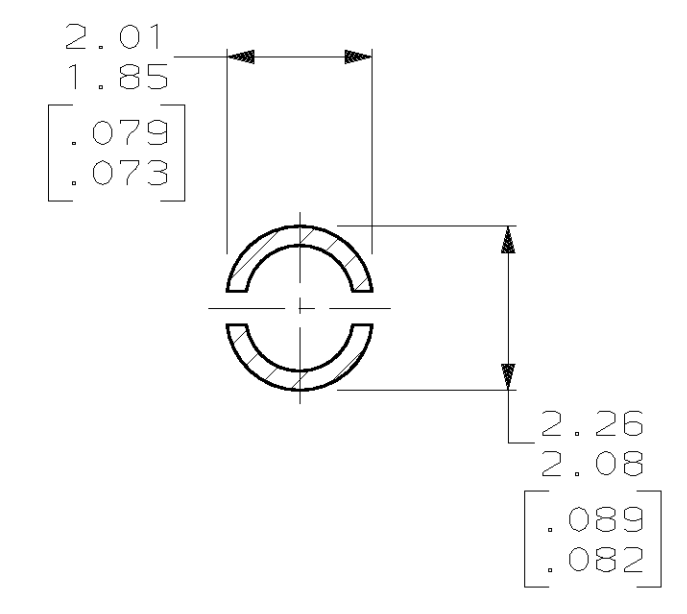
LOC		DIST		P		F		ZONE		LTR		REVISIONS		DATE	APPD
CM	53												DESCRIPTION	28-JAN-99	BL
												M	REV PER EC 0G1B-0261-98		RS



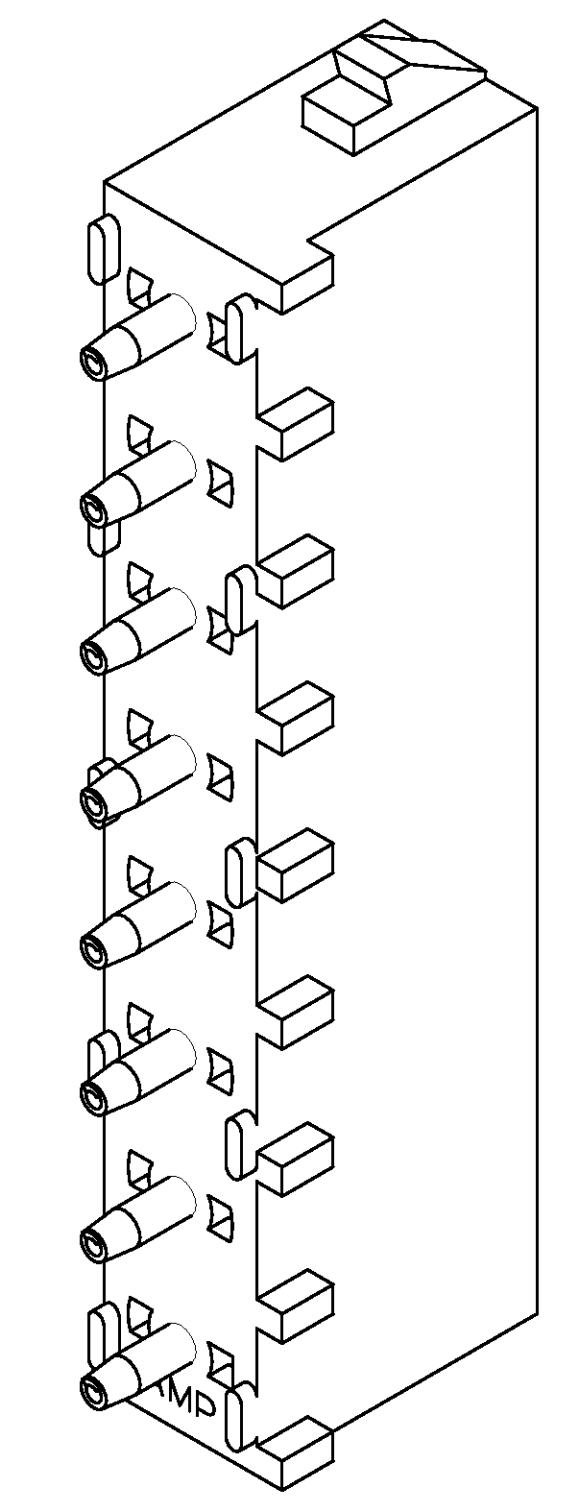
- PARTS COMPLY WITH AMP SOLDERABILITY SPECIFICATION 109-11-3.
-
-
- DIMENSIONS IN BRACKETS ARE IN INCHES.
- CIRCUIT IDENTIFICATION CHARACTERS ARE ADJACENT TO THE INDICATED CAVITIES, BUT LOCATION AND ORIENTATION MAY DIFFER FROM PRINT.



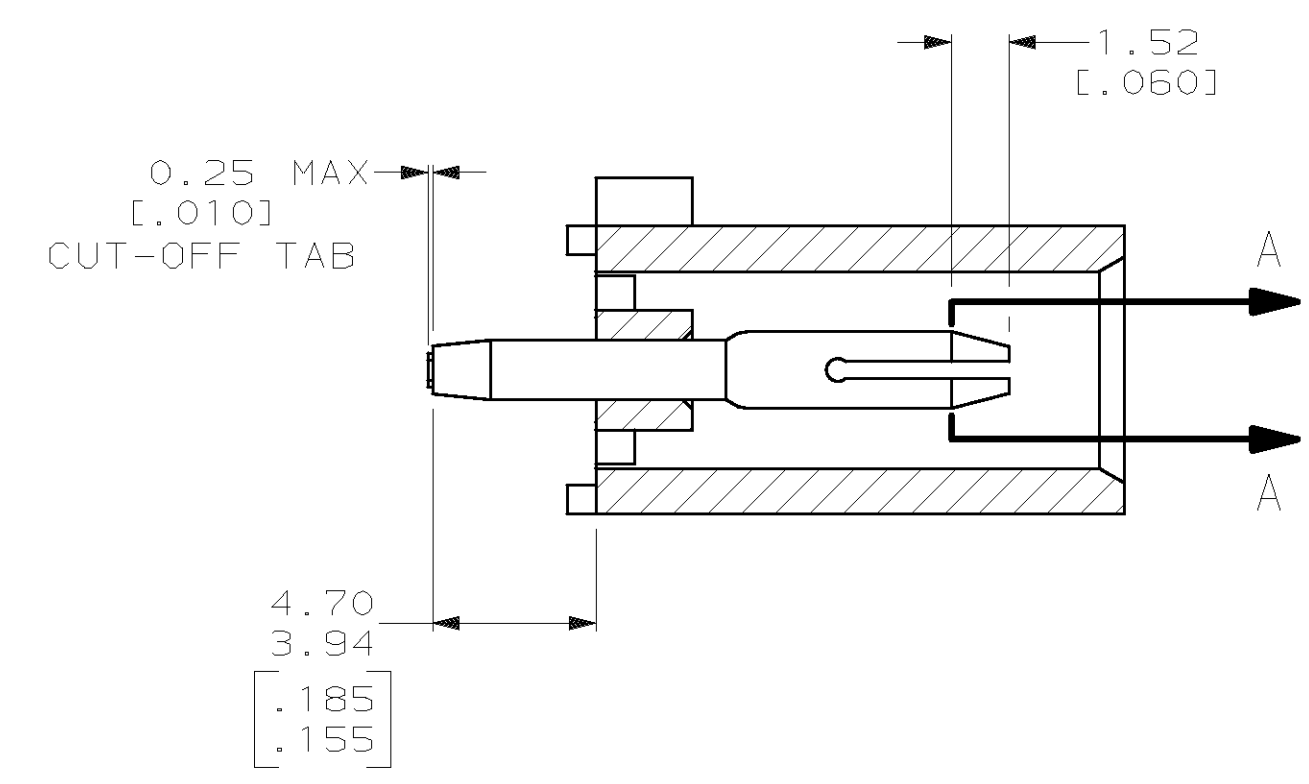
RECOMMENDED MOUNTING HOLE PATTERN FOR 1.57 [.062] THICK P.C. BOARD



SECTION A-A SCALE 10:1



3-DIMENSIONAL MODEL NTS



METRIC

THIS DRAWING IS A CONTROLLED DOCUMENT FOR AMP INCORPORATED. IT IS SUBJECT TO CHANGE AND THE CONTROLLING ENGINEERING ORGANIZATION SHOULD BE CONTACTED FOR THE LATEST REVISION.

PHOSPHOR BRONZE, PRE-TIN	NYLON, UL94V-0, WHITE	641828-1
PIN CONTACT MATERIAL AND FINISH	HOUSING MATERIAL	PART NO
DO NOT SCALE PRINT. UNLESS SPECIFIED DIMENSIONS IN mm [INCHES] TOLERANCES ON: 2 PLC DEC ±0.13 [.005] 3 PLC DEC ±- ANGLES ± -	12-3-93 T. BECK CHK 12-3-93 R. SWING APPD 12-14-93 D. SELF APPD 12-14-93 D. SELF PRODUCT SPEC -	AMP AMP Incorporated Harrisburg, PA 17105-3508
SEE TABLE	APPLICATION SPEC -	NAME PIN HEADER ASSEMBLY, 8 CIRCUIT, UNIVERSAL MATE-N-LOK™
SEE TABLE	WEIGHT -	SIZE D CAGE CODE 00779 DRAWING NO C-641828
		SCALE 5:1 SHEET 1 OF 1