

AC-to-DC Wall Adapters & Table-Top Power Supplies

JAMECO ReliaPro

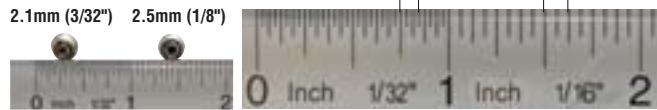
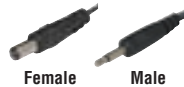
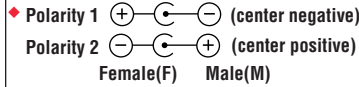
AC-to-DC Unregulated Linear Wall Adapters (Continued)

2.1mm (3/32") 2.5mm (2/16") 1/8"

*Web Code: UAP

Input: 120VAC @ 60Hz Call for Additional OEM pricing.

2.1mm (3/32") 2.5mm (1/8")



Part No.	Manufacturer	Product No.	Output Rating		Output Connector ID x OD mm Female/Male; Polarity ◆	Size (H" x W" x D")	Case Color	Output Cord Length	Wt. (lbs.)	Agency Approvals	Pricing			
			Voltage (VDC)	Current (mA)							1	10	50	100
117479	ReliaPro	DDU120080E6451	12	800	2.1mm x 5.5mm F 2	3.0 x 2.3 x 2.0	Black	6'	0.9	UL/CUL	\$8.95	\$7.95	\$6.95	\$6.25
2217799	Arndt	AD-1280G†	12	800	2.5mm x 5.5mm F 2 (medical grade)	3.2 x 2.2 x 1.9	Black	12'	1.3	UL/CUL	4.95	4.49	3.95	3.59
2158160	Arndt	GPU481200800WD00	12	800	2.5mm x 5.5mm F 2	2.9 x 2.3 x 1.9	Black	6'	1.0	UL/CUL	6.95	5.95	5.49	4.95
129331	ReliaPro	DDU120080-F2411	12	800	2.5mm x 5.5mm F 2	3.0 x 2.3 x 2.0	Black	6'	0.9	UL/CUL	8.95	7.95	6.95	6.25
121232	ReliaPro	DDU120080F2271	12	800	3.5mm M 2	2.6 x 2.4 x 2.0	Black	6'	0.9	UL/CUL	9.95	8.95	7.95	6.95
2215742	Arndt	TO12LF1209**	12	1000	2.1mm x 5.5mm F 2	3.0 x 1.6 x 1.4	Black	6'	0.2	UL/CUL/CEC	6.95	5.95	5.49	4.49
2215734	Arndt	MT12-Y120100-A1**	12	1000	2.1mm x 5.5mm F 2	2.7 x 1.5 x 1.3	Black	6'	0.2	UL/CUL/CEC	6.95	5.95	5.49	4.49
100870	ReliaPro	DDU120100-Z7972	12	1000	2.1mm x 5.5mm F 2	2.9 x 2.3 x 1.9	Black	6'	0.9	UL/CUL	9.95	8.95	7.95	7.29
2211135	Fellows	A-48-628(R2)	12	1000	2.5mm x 5.5mm right angle F 2	3.1 x 2.2 x 1.9	Black	6'	1.1	UL/CUL	5.95	5.49	4.95	4.49
2179770	Westell	MT12-4120100-A1**†	12	1000	2.5mm x 5.5mm F 2	2.9 x 1.6 x 1.2	Black	6'	0.2	UL/CEC	7.95	6.95	6.25	5.59
105478	ReliaPro	DDU120100-Z2992	12	1000	2.5mm x 5.5mm F 2	3.1 x 2.4 x 2.0	Black	6'	1.0	UL/CUL	9.95	8.95	7.95	7.29
15392	ReliaPro	DDU120100E7302	12	1000	3.5mm M 2	3.3 x 2.4 x 2.0	Black	6'	1.0	UL/CUL	9.95	8.95	7.95	7.29
196779	ReliaPro	DDU120120-G0030	12	1200	2.5mm x 5.5mm F 2	3.0 x 2.3 x 1.9	Black	6'	1.0	UL/CUL	10.95	9.95	8.95	7.95
2192747	Arndt	MW48-1201250	12	1250	2.1mm x 5.5mm F 2	3.0 x 2.3 x 1.9	Black	6'	1.4	UL/CUL	6.95	6.25	5.59	4.95
203036	ReliaPro	DDU120150H4530	12	1500	2.1mm x 5.5mm F 1	3.3 x 2.2 x 1.9	Black	6'	1.5	UL/CUL	12.95	11.49	9.95	8.95
136881	ReliaPro	DDU120150K1960	12	1500	2.1mm x 5.5mm F 2	3.4 x 2.7 x 2.2	Black	6'	1.5	UL/CUL	12.95	11.49	9.95	8.95
101291	ReliaPro	DDU120150	12	1500	2.5mm x 5.5mm F 2	3.4 x 2.7 x 2.2	Black	6'	1.5	UL/CUL	12.95	11.49	9.95	8.95
2218003	ReliaPro	DFU120200R	12	2000	2.1mm x 5.5mm F 2	3.4 x 2.7 x 2.2	Black	6'	1.5	UL/CUL	14.95	13.49	11.95	10.95
2224008	ReliaPro	DFU120200R	12	2000	2.5mm x 5.5mm F 2	3.4 x 2.7 x 2.2	Black	6'	1.5	UL/CUL	14.95	13.49	11.95	10.95
308099	ReliaPro	DDU135100H3210	13.5	1000	2.1mm x 5.5mm F 2	2.9 x 2.3 x 1.9	Black	6'	1.0	UL/CUL	10.95	9.95	8.95	7.95
123932	ReliaPro	DDU140070Z7470	14	700	2.1mm x 5.5mm F 2	2.6 x 2.4 x 2.0	Black	6'	1.0	UL/CUL	8.95	7.95	6.95	6.25
190001	ReliaPro	DCU150050E3021	15	500	2.1mm x 5.5mm F 2	2.3 x 2.4 x 1.9	Black	6'	0.8	UL/CUL	7.95	6.95	6.25	5.95
189982	ReliaPro	DCU150050E3031	15	500	2.5mm x 5.5mm F 2	2.3 x 2.4 x 1.9	Black	6'	0.8	UL/CUL	8.95	7.95	7.29	6.49
191652	ReliaPro	DDU150100D7051	15	1000	2.1mm x 5.5mm F 2	3.3 x 2.2 x 1.9	Black	6'	1.0	UL/CUL	10.95	9.95	8.95	7.95
2081713	DVE	DV-1790	17	900	2.5mm x 5.5mm F 2	3.2 x 2.2 x 2.0	Black	6'	1.2	UL/CSA	6.95	6.25	5.59	4.95
2205261	ReliaPro	DDU180100H4550	18	1000	2.1mm x 5.5mm F 2	3.3 x 2.2 x 1.9	Black	6'	1.4	UL/CUL	10.95	9.95	8.95	7.95
206958	ReliaPro	DDU180100H4551	18	1000	2.5mm x 5.5mm F 2	3.3 x 2.2 x 1.9	Black	6'	1.4	UL/CUL	10.95	9.95	8.95	7.95
2228017	Arndt	WPS72018DG†	18	1100	2.1mm x 5.5mm F 2	3.4 x 2.7 x 2.2	Black	6'	1.4	UL/CUL	9.95	8.95	7.95	6.95
102285	ReliaPro	DDU240040Z7860	24	400	2.1mm x 5.5mm F 2	3.0 x 2.3 x 2.0	Black	6'	0.9	UL/CUL	8.95	7.95	6.95	6.25
2192510	ReliaPro	DDU240050RS1160	24	500	2.1mm x 5.5mm F 2	2.9 x 2.3 x 1.9	Black	6'	1.0	UL/CUL	8.95	7.95	6.95	6.25
191556	ReliaPro	DDU240050E5852	24	500	2.5mm x 5.5mm F 2	3.1 x 2.3 x 1.9	Black	6'	1.0	UL/CUL	9.95	8.95	7.95	7.29
139088	ReliaPro	DDU240050E9160	24	500	3.5mm M 2	3.1 x 2.3 x 1.9	Black	6'	1.0	UL/CUL	8.95	7.95	6.95	5.95
168495	ReliaPro	DFU240080J3180	24	800	2.1mm x 5.5mm F 2	2.9 x 1.9 x 1.6	Black	6'	0.4	UL/CUL/TUV	11.95	10.95	9.95	8.95
220960	ReliaPro	DFU240100G2300	24	1000	2.1mm x 5.5mm F 1	3.4 x 2.7 x 2.2	Black	6'	1.6	UL/CUL	12.95	11.95	10.95	9.95
199523	ReliaPro	DDU300050E9340	30	500	2.5mm x 5.5mm F 2	2.9 x 2.3 x 1.9	Black	6'	1.1	UL/CUL	10.95	9.95	8.95	7.95
2167621	Seven Star	SS104*	1.5, 3, 4.5, 6, 7.5, 9, 12	500	0.7x2.3, 1.5x4, 2.1x5, 2.5x5.5 Female 2.5, 3.5 Male (LED indicator)	3.3 x 2.0 x 1.9	Black	6'	0.8	—	4.95	3.95	3.49	2.95
123158	Steren	900-100*	1.5, 3, 4.5, 6, 7.5, 9, 12	1000	1.3x3.5, 2.1x5, 2.5x5.5 Female 2.5, 3.5 Male, 9V battery snap (LED ind.)	3.7 x 2.2 x 2.5	Black	6'	0.9	—	11.95	10.95	9.95	8.95

*110/220VAC input voltage **Slimline †3 prong ground

GlobTek® AC-to-DC Medical Table-Top Regulated Switching Power Supplies

*Web Code: WBM

- 2.5mm x 5.5mm female center positive
- Input voltage: 90-264VAC @ 47-63Hz
- Leakage current: 0.1mA max.
- Regulation (line & load): ±5% • 3-wire AC input
- Isolation voltage: 4,000VAC • Size: 2.9"L x 2.0"W x 1.6"H
- Ripple & noise: 1% or 100mV, whichever is smaller
- Cord lengths: DC: 6'; AC: not included use P/N 132011, pg 102



Part No.	Mfr. Part No.	Power (W)	Output VDC/Amps	Pricing		
				1	10	50
230683	TR9CE1250CP	15.0	+12/1.25	\$34.95	\$29.95	\$24.95
230798	TR9CI2100LCP	50.4	+24/2.1	49.95	44.95	39.95

*Interchangeable Power Supplies, Adapters and Tips — Enter Web Code NBH

Accessory Power Input Cords for Table-Top Power Supplies

*Web Code: UBF



Part No.	Ref. No. *	Description	Color	AWG	Certification	Cord Length	Wt. (lbs.)	Cord Type	Pricing			
									1	10	50	100
189587	1	2-conductor power cord (Figure 8 style)	Black	18/2	UL/CSA	6'	0.3	SPT	\$2.95	\$2.69	\$2.39	\$2.19
1953559	3	3-conductor flat power cord (Mickey Mouse™ style)**	Black	18/3	UL/CSA	6'	0.4	SPT-2	2.95	2.59	2.29	1.95
1951123	3	3-conductor round power cord (Mickey Mouse™ style)**	Black	18/3	UL/CSA	6'	0.4	SVT	2.95	2.75	2.59	2.25
38050	2	3-conductor power cord	Black	18/3	UL/CSA	6'	0.4	SVT	4.95	4.49	3.95	3.59

*These reference numbers for "AC cord needed" for Table-Top Power Supplies on pages 96-97

**Ref #3 chose flat or round cable

More Power Cords on page 102

*For additional products, availability and specifications visit [Jameco.com](http://www.Jameco.com) and enter the Web Code in the product search box

3 LEVELS OF SAVINGS
NAME BRANDS HOUSE BRANDS SPECIAL BUY

Order by Phone at 1-800-831-4242 or Online at www.Jameco.com