

Vantager Palm Size Card Reader/Writer

User Manual

(Rev.:1.0)



INDEX

● Trademarks -----	2
● Introductions -----	2
● Package contents -----	2
● Hardware requirements -----	2
● System Support -----	2
● Media icon driver installation -----	2
● Windows® XP example -----	2
● How to Install Driver on Mac 9.x -----	5
● How to load your media memory card to slot -----	6
● Indicator description -----	7
● Notice for user application -----	7
● Product specifications -----	8

■ Trademarks

All names and products mentioned below are registered trademarks of their respective companies.

■ Introductions

The USB2.0 palm size Card Reader is an adapter free external multi card reader. There are five media slots can support over twenty types of media cards, the advantage of card reader can accept most popular small form factor flash cards directly; such as Mini SD, RS-MMC, MS-Duo or small T-flash, Micro SD. You can use them to read \ write \ erase or data exchange easily without requiring any assistant adapter. It also supports standard media memory cards such as Secure Digital card (SD), Multi Media card (MMC), Compact Flash™ (CF), IBM® Microdrive, Smart Media™ (SM), Memory stick (MS), Memory stick pro or xD picture card and other compatible memory cards.

■ Package contents

- Multi card reader
- Driver disc with manual

■ Hardware requirements

- IBM® PC or Mac computer with one available USB port.

■ System Support

- Windows® 98/SE, Windows® 2000, Windows® ME, Windows® XP.
- Linux OS kernel versions 2.4.1.2 or higher.
- Mac OS 9.0x or higher

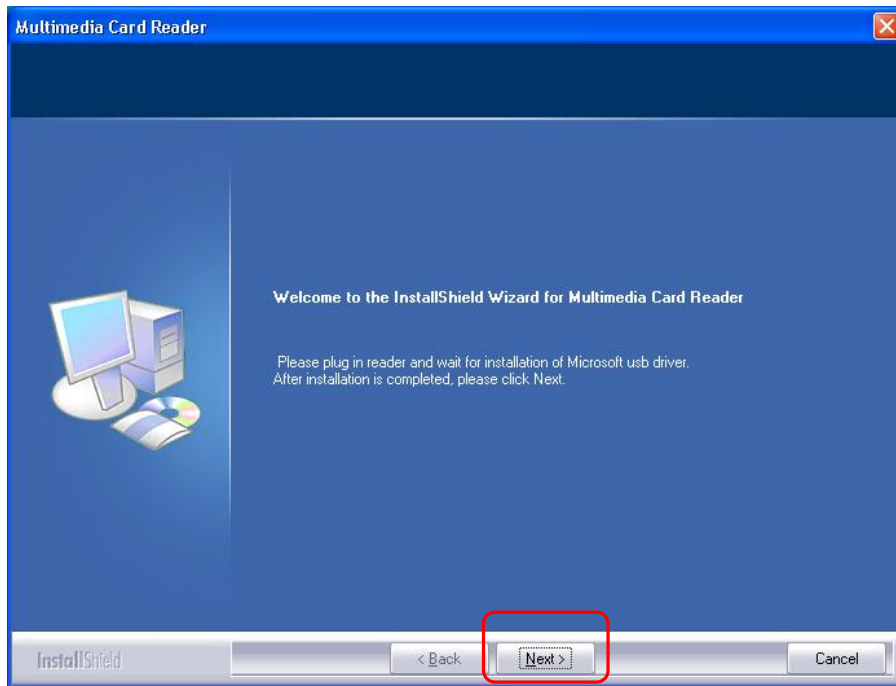
■ Media icon driver installation

For easy recognize media icon on your computer, you need to install an application driver for all Windows platforms to enable the media icon, you can find the software program in bundle disc and follow next steps to complete the driver installation.

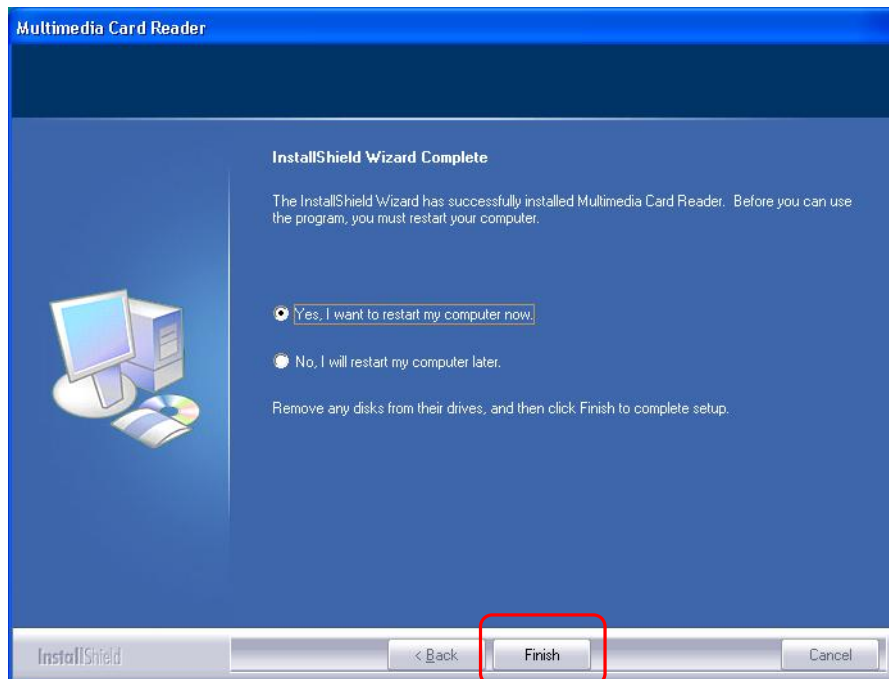
■ Windows® XP example:

1. Close all of your exist executing file.
2. Insert driver disc into the CD-ROM drive.
3. Double click on " **Driver**" folder.
4. Double click on " **setup**" icon.

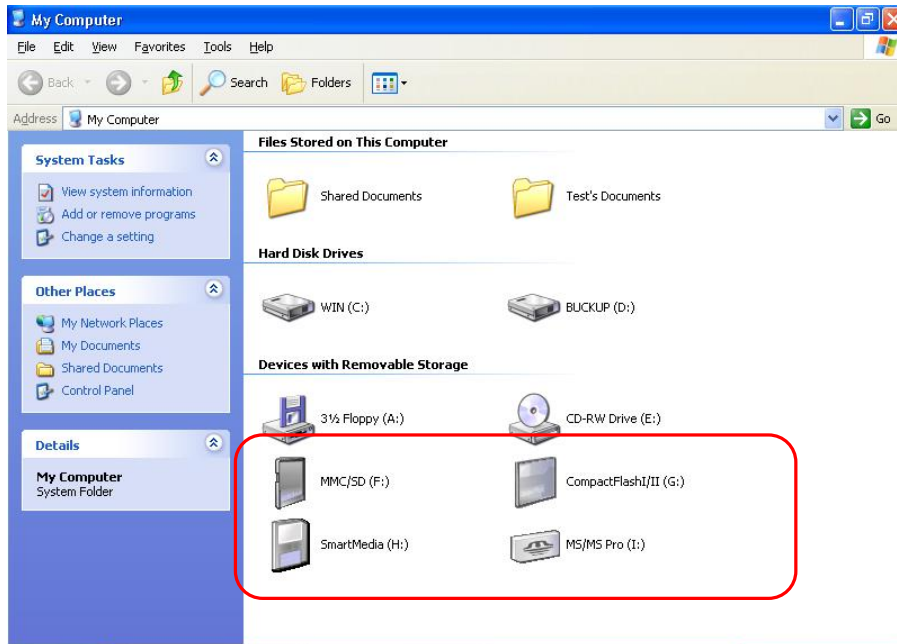
5. Click “**Next**” button to begin software installing.



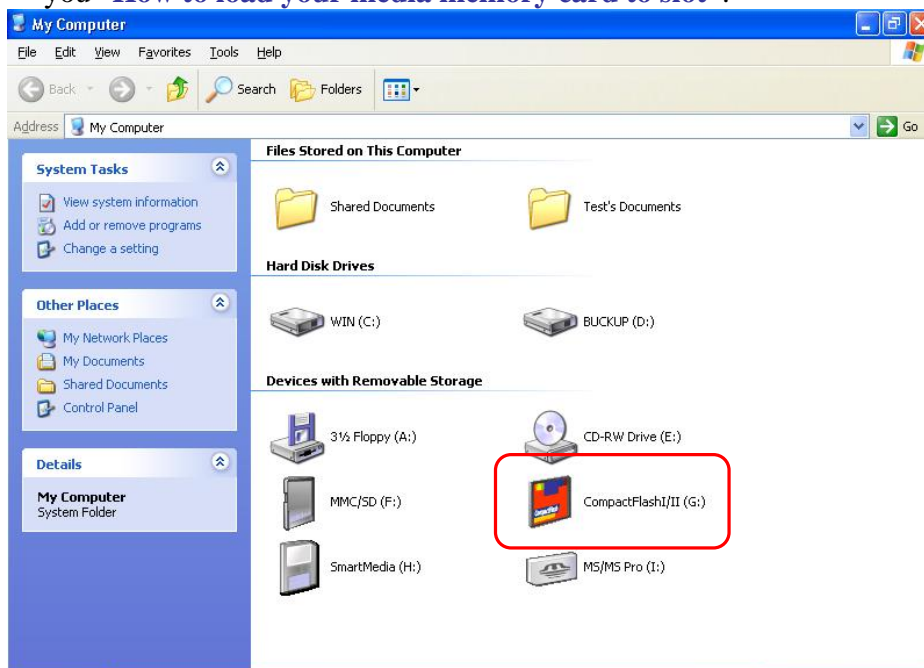
6. This window shows you that driver has completely installed. Click “**Finish**” to restart your computer.



7. Reboot your system, Windows will detect reader and display four media icons in “My Computer”, now you can insert your memory card for application.



8. When system detects an existent media card has inset successfully in card slot, the gray media icon will change to a colorful icon for identification. (Refer to the following illustration)
If you have any problem of using your media card, next section will show you “**How to load your media memory card to slot**”.

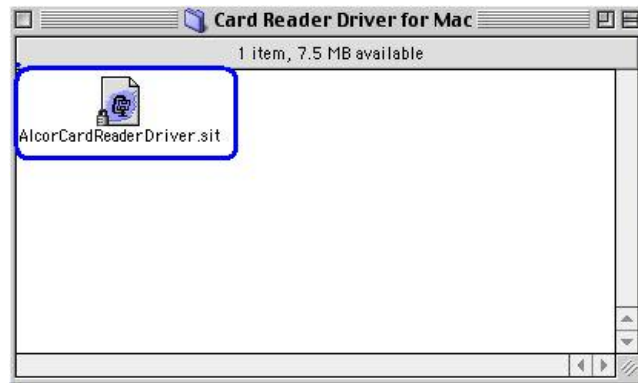


■ **How to install driver on Mac OS 9**

The reader is driver-free for Mac 10.1 or higher system, you don't have to install any driver, just connect reader to Mac's USB port. Mac system will detect this reader automatically.

The card reader need to setup relative driver for OS 9.x or 8.6x series, please following the next steps to complete driver installation before you use it.

1. Double click "**AlcorCardReaderDriver.sit**". (Mac's compress file format)



2. Open "**AlcorCardReaderDriver**" folder.
3. Double click "**AlcorCardReaderDriverInstaller**" file.



4. Press "**Install**" button to install driver.

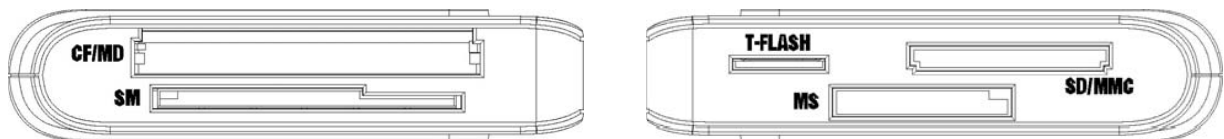


5. Restart the computer.

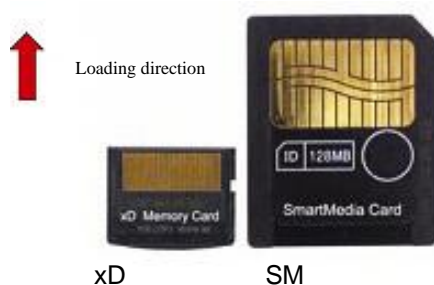


■ How to load your media memory card to slot

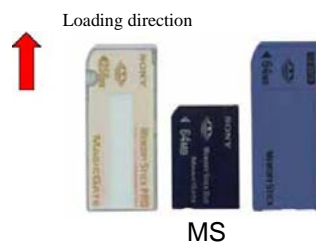
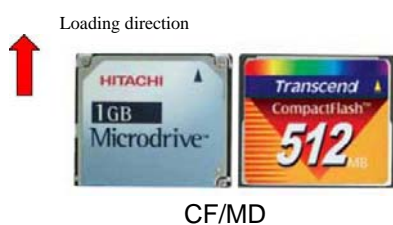
This card reader provides five slots for different types of media memory cards application. You must load each media card in correct slot and do not attempt to insert the card in reverse direction by force. Otherwise it may damage your media memory cards and card slot by incorrect insertion. Please refer to the following description and illustration before using it.



1) The memory gold contact area must be “Upward”



2) The memory gold contact area must be “Downward”



■ Indicator Description

The card reader provides a power ON and data read /write icon indicators display for status diagnosis. Normally two icon indicators are disappeared; when card reader has linked by USB port, the red power icon indicator will turn ON, if a media memory card has detected by computer the green icon will light up and it will turn flash while data is transmitting between PC and media memory card.



WARNING:

Please do not remove any media memory card while data is transmitting between PC and card reader or R/W icon indicator is flashing, it may result your computer to crash and lost valuable data.

■ Notice for user application

Without T-Flash icon display

The T-flash connector is an extra media slot for user easy to use T-flash (TransFlash) memory card directly without any assistant adapter. Cause of the bus is shared with MMC/SD slot, so you can only find four media icons on display and without T-Flash icon. For this reason, the card reader can only accept either SD/MMC or T-flash media memory card at the same time and they can't data exchange for each other. However, both their application will be recognizable by only the same MMC/SD icon.

■ **Product specifications**

Specifications	
Chipset:	ALCOR
Standard Compliant:	<ul style="list-style-type: none"> ● USB specification Rev 1.1/2.0 ● USB mass storage class drive
Support File Format:	FAT 12/16/32 /NTFS
Five Memory Slots:	CF/MD, SM/xD, SD/mini SD/MMC, MS/MS-Duo, T-Flash
Media Icon Display:	MMC/SD/(T-Flash), Compact Flash I/II, Smart Media/xD, MS/MS Pro
Media Card Supports:	CF TypeI, CF TypeII, CF UlrraII, Microdrive, Magicstor, SMC, SM ROM, xD, M-series xD, SD, SD Ultra II, mini SD, MMC-I, MMC-II, MMC 4.0,MMC Dual Voltage, RS-MMC, RS-MMC Dual Voltage, RS-MMC 4.0, TransFlash, Micro SD, MS, MS Select, MS ROM, MS Magic Gate, MS-PRO Magic Gate, MS-DUO Magic Gate, MS-PRO-DUO etc.
Indicators:	One power ON/USB link One card detected and data accessing indicator
Interface:	Mini USB connector
Operating Temperature:	0°C~40 °C
Stock Temperature:	-20°C~60°C
USB Cable:	100cm (USB A-type plug to mini USB plug)
OS Support:	<ol style="list-style-type: none"> 1. Windows® 98/SE, Windows® ME, Windows® 2000, Windows® XP 2. Mac OS 9x , 10.1x or higher 3. Linux OS 2.4.1.2 or higher
Driver support:	<ul style="list-style-type: none"> ● Windows® 98/SE ● Mac 9.
Write-protect:	Support media card lock to record.
Housing Dimensions:	73*59*17 mm (L*D*H)
Certification:	FCC Class B, CE
All Materials:	RoHS Compliant

* This specification may be revised without notice.

- END-

P/N: M-511HR211